



OFFERS OVER £325,000
WILLOW ROAD, BARROW UPON SOAR,

REZIDE
GROUP



*GUIDE PRICE £325,000 - £335,000 * Nestled within the highly coveted Willow Road development, this versatile 3/4 bedroom townhouse spans three floors, catering to a diverse range of potential buyers. Upon entry, the ground floor welcomes you with a spacious layout where the kitchen seamlessly integrates with the living room through double doors, offering the flexibility to adapt to suit your personal requirements.



The well-equipped kitchen boasts a built-in double oven, gas hob, and ample space for essential appliances, with a convenient downstairs cloakroom housing laundry facilities discreetly. Bi-fold doors lead from the generous living area to the south-westerly facing garden, complemented by a handy storage cupboard, providing seamless indoor-outdoor living and entertaining opportunities.

Ascending to the first floor reveals a versatile room, currently utilized as a second sitting area, featuring a charming Juliet balcony overlooking the garden. This adaptable space easily transforms into a sizable fourth bedroom, catering to the evolving needs of the occupants. Additionally, a well-appointed double bedroom with built-in wardrobes graces the front of the property, offering comfort and privacy. A family bathroom completes this level, ensuring convenience and functionality for all occupants.

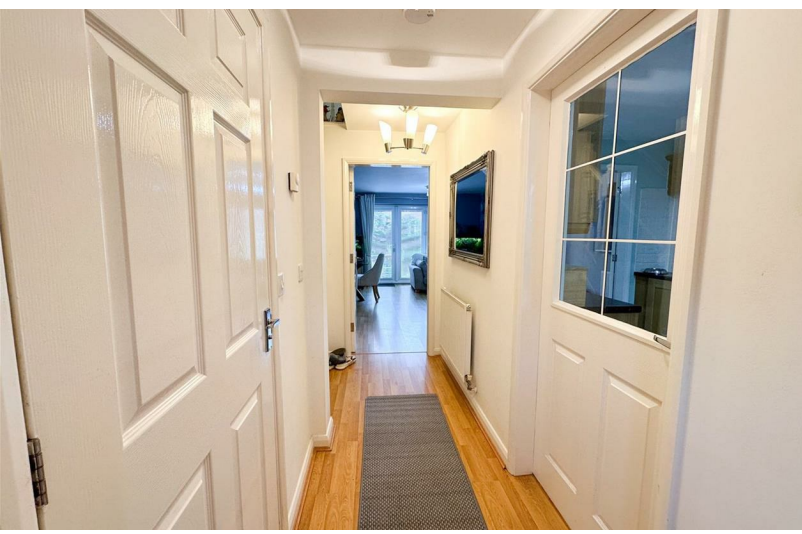






On the second floor, two further double bedrooms benefit from a 'Jack and Jill' shower room and built-in wardrobes, optimizing storage and organization. These bedrooms provide ample space for relaxation and personal retreat, ideal for both family members and guests alike.

Outside, the mature south-westerly garden offers a serene retreat with a patio area for relaxation, perfect for enjoying outdoor dining or simply unwinding amidst the tranquility of nature. Allocated parking and a single garage at the rear provide convenience and peace of mind for vehicle owners.







Boasting a desirable location and thoughtful design, this exceptional townhouse epitomizes modern family living at its finest, promising a harmonious blend of comfort, style, and functionality. Whether you're seeking a spacious family home or a versatile property to accommodate changing lifestyles, this townhouse offers the perfect combination of amenities and charm to suit your needs.







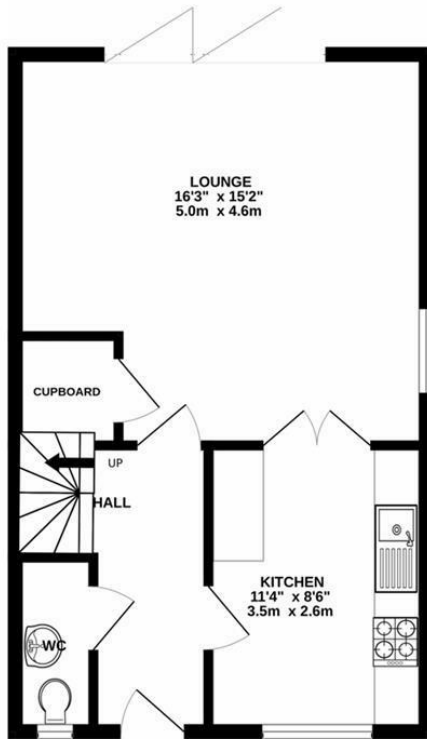


REZIDE
GROUP

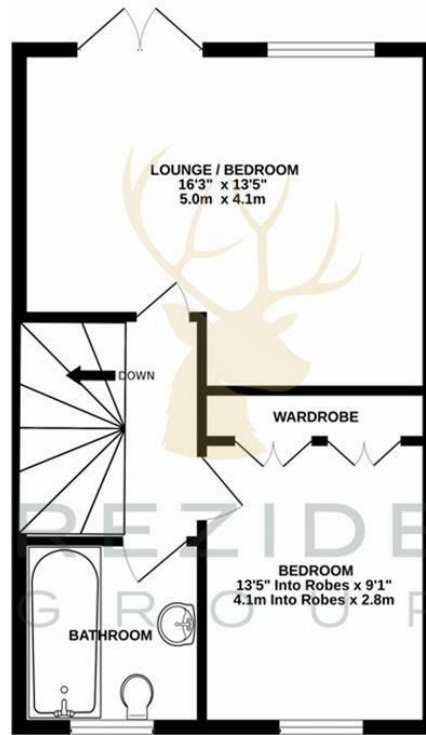


PLOT PLAN FOR GUIDANCE ONLY

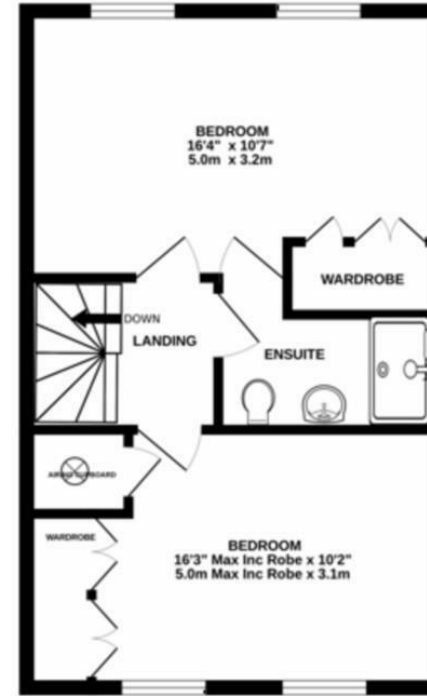
GROUND FLOOR



1ST FLOOR



2ND FLOOR



Whilst every attempt has been made to ensure the accuracy of the floorplan contained here, measurements of doors, windows, rooms and any other items are approximate and no responsibility is taken for any error, omission or mis-statement. This plan is for illustrative purposes only and should be used as such by any prospective purchaser. The services, systems and appliances shown have not been tested and no guarantee as to their operability or efficiency can be given.
Made with Metropix ©2024

