



OFFERS OVER £550,000
THE ROOKERY, BARROW UPON SOAR,



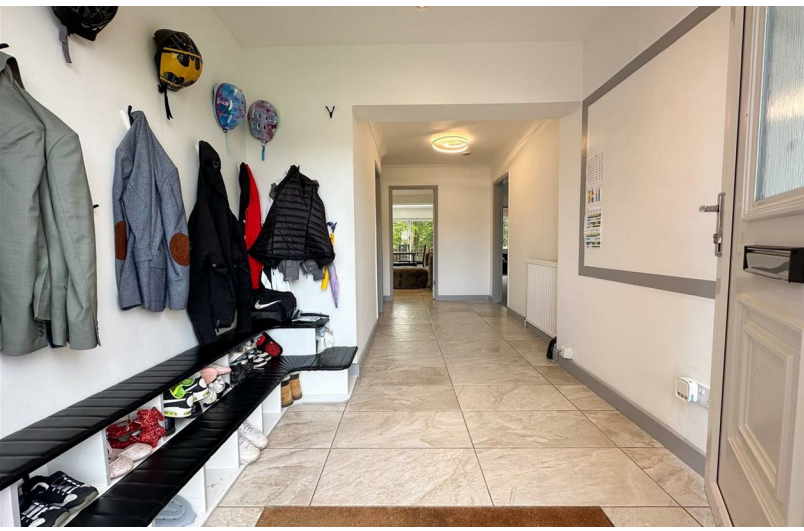
REZIDE
GROUP



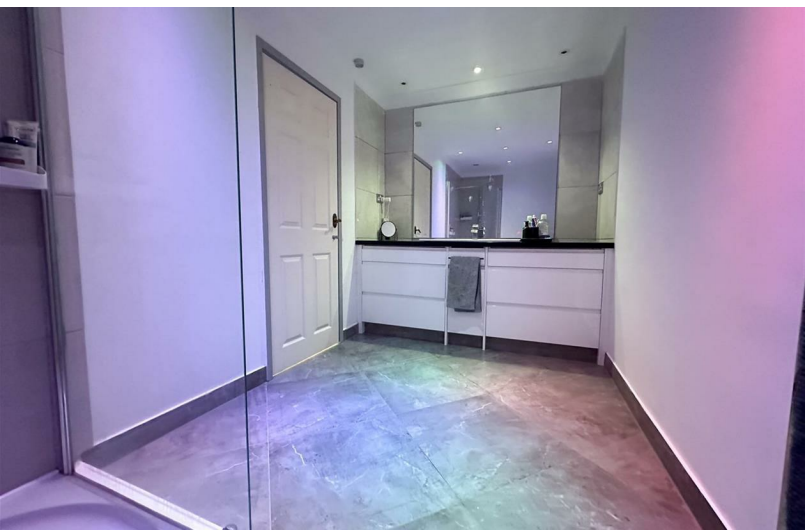
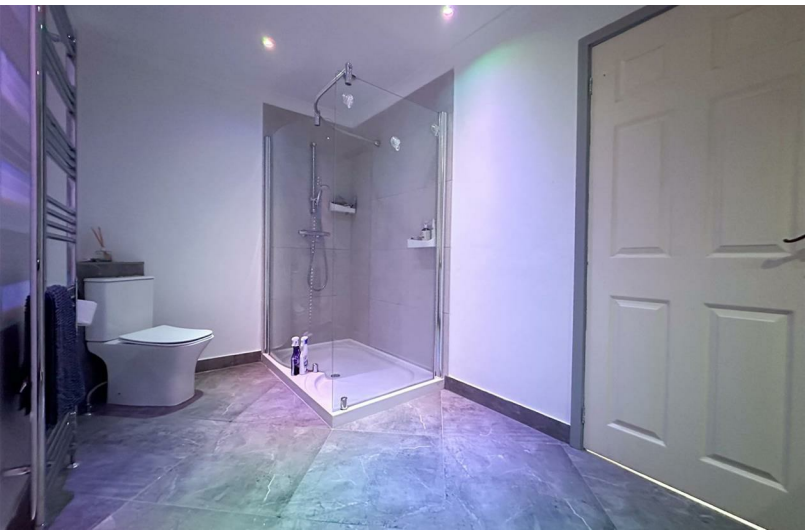
Ideally situated in central Barrow Upon Soar, this remarkable six-bedroom detached family home offers an abundance of living space, thoughtfully extended to embrace the essence of open-plan living and meticulously designed to cater to the needs of the modern buyer. Available with NO CHAIN, an internal viewing is highly recommended to truly appreciate the level of accommodation and spaciousness this property has to offer.



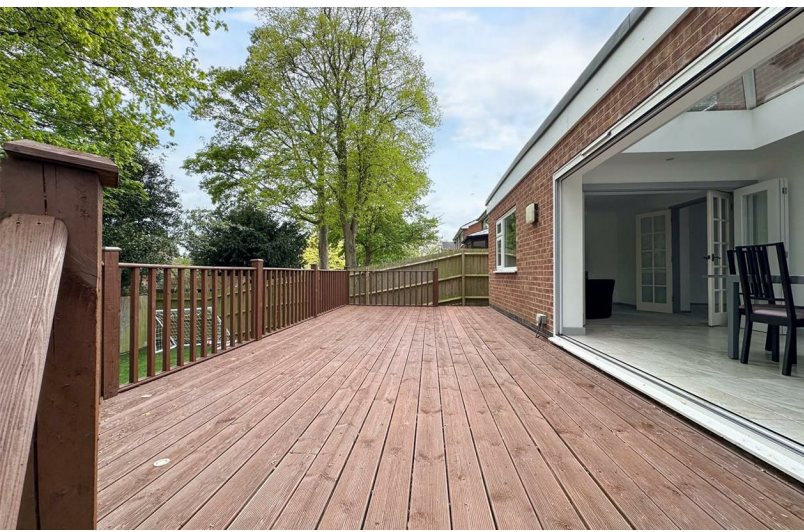
















PLOT PLAN FOR GUIDANCE ONLY



Ground Floor

First Floor

Every attempt has been made to ensure the accuracy of the floorplan contained here, measurements of walls, windows, rooms and any other items are approximate and no responsibility is taken for any error, omission or mis-statement. This plan is for illustrative purposes only and should be used as such by any prospective purchaser. The services, systems and appliances shown have not been tested and no guarantee as to their operability or efficiency can be given.
 Made with Metropix ©2024

