



REZIDE
GROUP



THE OLD BUTCHERS SHOP, FAR STREET,
WYMESWOLD
OFFERS OVER £375,000



*The Old
Butchers Shop*



Nestled in the heart of a highly desirable village, this charming home, once the renowned Village Butchers, has been meticulously renovated to offer a modern yet luxurious living space. Boasting a sleek, high-spec interior tailored for contemporary living, it is an ideal haven for young professionals or anyone seeking a stylish abode within easy reach of local amenities.



Step into history with "The Old Butchers Shop" in Wymeswold, a meticulously renovated gem steeped in character and charm. Originally the village Butchers, and believed to have housed the village Public House, this iconic property exudes a sense of heritage dating back to 1786.

Crafted by Belvoir Developments in 2019 as part of an exclusive character homes development, this residence seamlessly blends classic allure with modern luxury. As you approach, the iconic sign hanging proudly evokes a sense of nostalgia, setting the stage for the treasures within.

Step through the front entrance into a meticulously designed hallway, where every detail whispers of elegance and refinement. The open-plan living room beckons, offering an ideal space for both entertaining and relaxation. Oak-paneled doors, sash windows, and abundant natural light create an inviting ambiance, while the adjacent kitchen boasts smart Porcelanosa units and top-of-the-line NEFF appliances.

Journey upstairs to discover two versatile bedrooms and a family bathroom adorned with a stunning suite. Ascend further to the crowning jewel of the property—the open-plan principal bedroom. With exposed beams, skylight windows, and a luxurious en-suite, this space is a true sanctuary.

Outside, a courtyard garden awaits, thoughtfully landscaped for serene outdoor living. Adjacent, a driveway provides convenient off-road parking for two vehicles, ensuring both comfort and practicality.

Nestled in the heart of the vibrant village of Wymeswold, this home offers not only historic charm but also modern convenience. With easy access to nearby Nottingham, Loughborough, and other major centers, as well as proximity to essential amenities and transportation hubs, it embodies the perfect blend of heritage and contemporary living. Don't miss your chance to own a piece of history reimagined for the modern age.

Listing Paragraph







DISCLAIMER

We endeavour to make our sales particulars accurate and reliable, however, they do not constitute or form part of an offer or any contract and none is to be relied upon as statements of representation or fact. Any services, systems and appliances listed in this specification have not been tested by us and no guarantee as to their operating ability or efficiency is given. All measurements have been taken as a guide to prospective buyers only and are not precise. If you require clarification or further information on any points, please contact us, especially if you are travelling some distance to view. Fixtures and fittings other than those mentioned are to be agreed with the seller by separate negotiation.





A tall, light-colored cabinet with a horizontal panel near the bottom, featuring a vented grille.

Upper wall cabinets with a light-colored finish and a thin dark border.

Countertop area featuring a coffee machine, a framed picture, and a small basket.

Lower wall cabinets with a light-colored finish and a thin dark border, illuminated by under-cabinet lighting.

A three-tiered metal shelving unit with wooden shelves, holding various bottles and decorative items.

Countertop area with a sink, a vase of yellow flowers, and a small wooden box.

Lower wall cabinets with a light-colored finish and a thin dark border, illuminated by under-cabinet lighting.

Two black metal bar stools with wooden seats and a circular base.

A window with a view of a brick building, featuring a dark frame and a white sill.

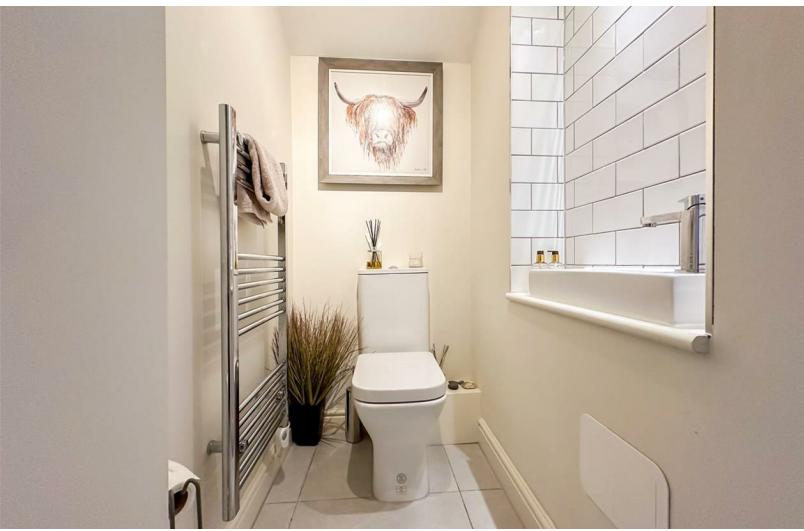
Countertop area with a laptop and other items, illuminated by under-cabinet lighting.

A light-colored cabinet with a dark trash bin integrated into its base.

A dark, rounded trash bin with a lid, integrated into the base of a cabinet.

A cluster of pendant lights with warm-toned bulbs and exposed black cords hanging from the ceiling.

A calendar with a dark, patterned cover, mounted on the wall.







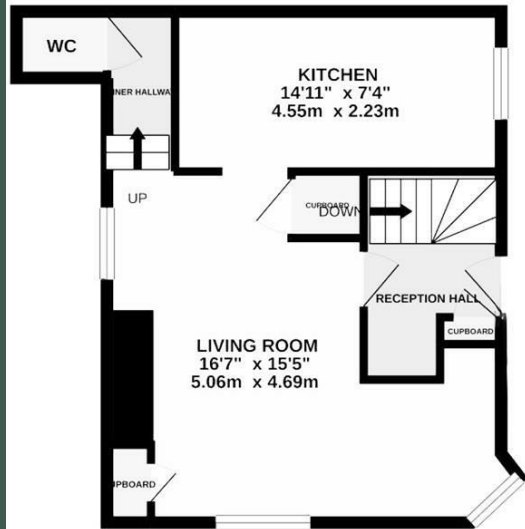




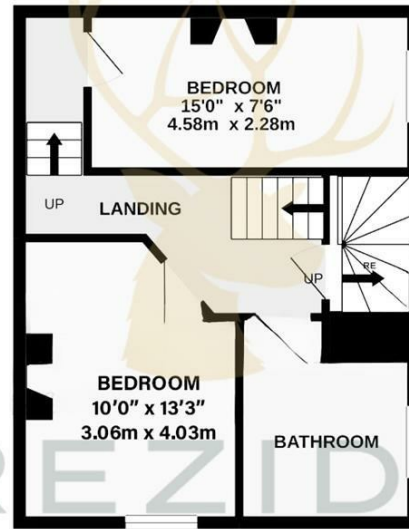




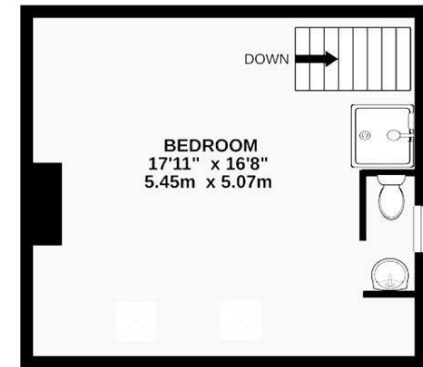
GROUND FLOOR



1ST FLOOR



2ND FLOOR



REZIDE
GROUP

Whilst every attempt has been made to ensure the accuracy of the floorplan contained here, measurements of doors, windows, rooms and any other items are approximate and no responsibility is taken for any error, omission or mis-statement. This plan is for illustrative purposes only and should be used as such by any prospective purchaser. The services, systems and appliances shown have not been tested and no guarantee as to their operability or efficiency can be given.

Made with Metropix © 2021

