



REZIDE  
GROUP



ASKING PRICE £219,950  
THE INLEYS, SHEPSHED, LOUGHBOROUGH



Welcome to The Inleys, Shepshed – a cozy three-bedroom semi-detached property nestled in the heart of Shepshed, offering comfort and convenience for everyday living. This fantastic property features three reception rooms, three bedrooms, a modern bathroom suite, private rear garden and off road parking. Please call 01509 274474 to find out more information.



Approaching the property, you'll notice its charming mock Tudor effect frontage and ample off-road parking. Step inside to discover a warm and inviting atmosphere, starting with a spacious dining room featuring laminate flooring, an electric fireplace, and contemporary dark woodwork – perfect for family gatherings or casual meals.

The kitchen diner provides a functional space for meal preparation and dining, with white kitchen units, laminate flooring, and a pleasant view of the rear garden. Adjacent, the lounge offers ample natural light and access to a versatile third reception room, ideal for various uses like a study or playroom.

Upstairs, three bedrooms await, each tastefully decorated with carpets and contemporary black woodwork. The modern family



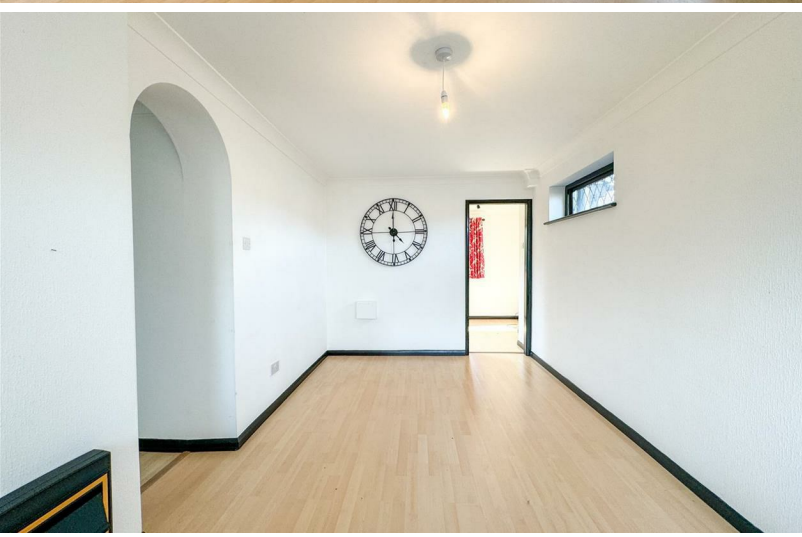




bathroom boasts a four-piece suite, including a bath, pedestal basin, and corner shower cubicle.

Outside, enjoy the convenience of off-road parking, a small front garden, and a private rear garden with established shrubs and a patio area – perfect for relaxing outdoors.

Located in the heart of Shepshed, this property offers easy access to local amenities, countryside walks, restaurants, and pubs, making it an ideal place to





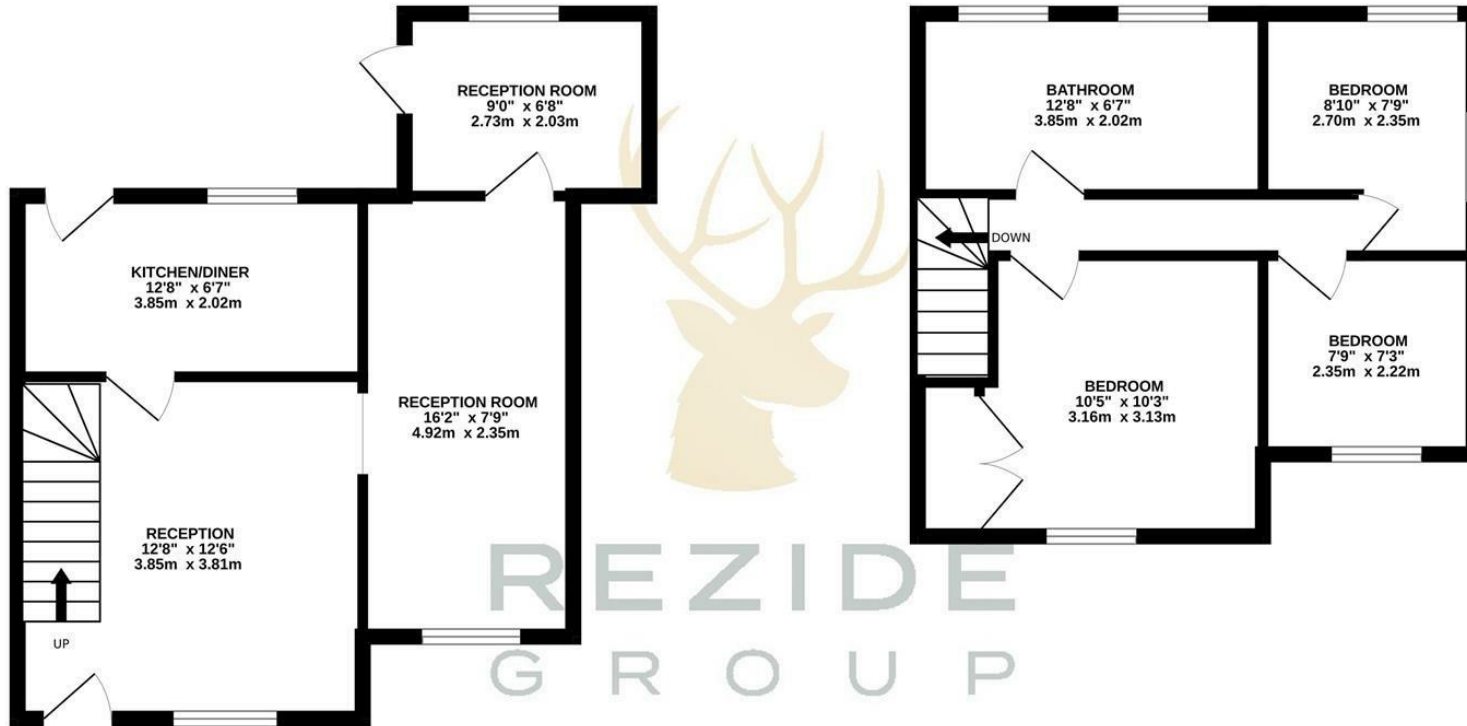
call home.

Don't miss out on the opportunity to make The Inleys your new home – schedule a viewing today!



GROUND FLOOR  
426 sq.ft. (39.6 sq.m.) approx.

1ST FLOOR  
366 sq.ft. (34.0 sq.m.) approx.



TOTAL FLOOR AREA : 793 sq.ft. (73.6 sq.m.) approx.

Whilst every attempt has been made to ensure the accuracy of the floorplan contained here, measurements of doors, windows, rooms and any other items are approximate and no responsibility is taken for any error, omission or mis-statement. This plan is for illustrative purposes only and should be used as such by any prospective purchaser. The services, systems and appliances shown have not been tested and no guarantee as to their operability or efficiency can be given.

Made with Metropix ©2024

