



REZIDE  
GROUP



OFFERS OVER £280,000

CASTLE ROAD, MOUNTSORREL, LOUGHBOROUGH



Welcome to your future oasis nestled in the heart of Mountsorrel, where charm meets modern convenience. This exquisite 4-bedroom detached property on Castle Road offers a perfect blend of space, comfort, and style. Situated in a tranquil cul-de-sac, this residence boasts two double rooms, two single rooms, a spacious kitchen diner, a large driveway, garage, family bathroom, and ensuite, alongside a ground floor WC. Step into your private garden retreat and experience the epitome of serene living.

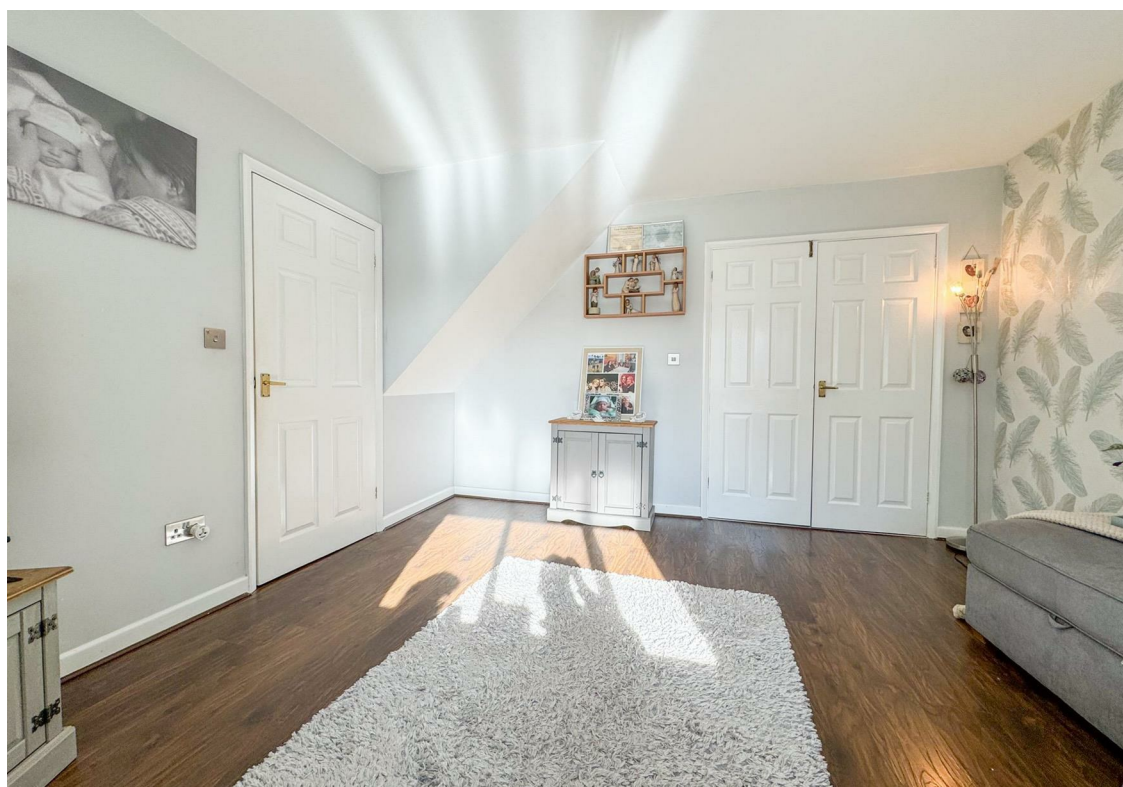


### A Layout Designed for Living

As you step through the entrance hall, you're greeted with a sense of warmth and openness. The ground floor welcomes you with a convenient WC and a spacious lounge adorned with a bay window, inviting ample natural light to fill the room. The kitchen diner, a focal point of the home, offers not only ample work surface and cupboard space but also a seamless connection to the lounge, creating a harmonious flow perfect for entertaining guests or enjoying family dinners.

### A Haven for Rest and Relaxation

Heading upstairs, you'll find two generously sized double bedrooms and two cozy single rooms, providing versatility for bedrooms, home offices, or dressing rooms to suit your lifestyle needs. The master bedroom, a sanctuary in its own right, features an en-suite shower room for added convenience, while a separate family bathroom caters to the needs of the







household with grace and style.

### Experience the Charm of Mountsorrel

Mountsorrel is not just a place to live; it's a vibrant community brimming with opportunities for leisure and recreation. From Leicestershire's only Michelin-starred restaurants to an array of charming cafes, pubs, and eateries, the village offers a culinary adventure for every palate. Explore the Memorial Centre, where a plethora of activities awaits, or embark on picturesque countryside walks along the river Soar or through the enchanting woodlands surrounding the quarry.





### Embrace Convenience and Comfort

Convenience is key in Mountsorrel, with a range of local amenities at your fingertips. Whether you're stocking up on groceries at Waitrose or the Co-op, or indulging in local fare at the neighborhood butcher or hairdresser, everything you need is just moments away.

### Don't Miss Your Chance

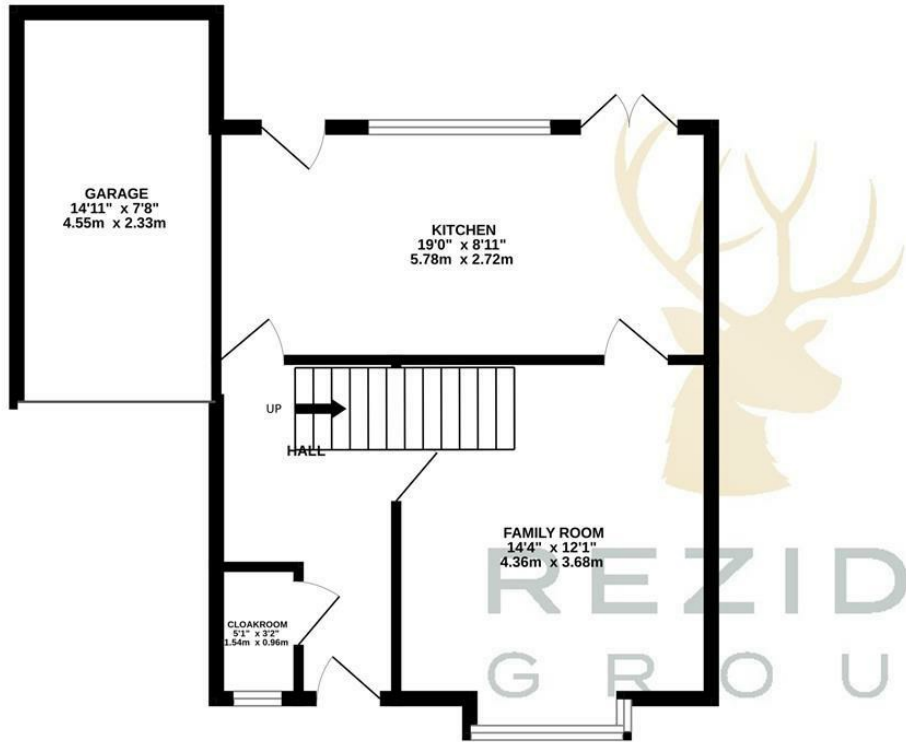
Seize this opportunity to make Castle Road your address and experience the epitome of modern living in Mountsorrel. Arrange a viewing today and let your journey to your dream home begin.



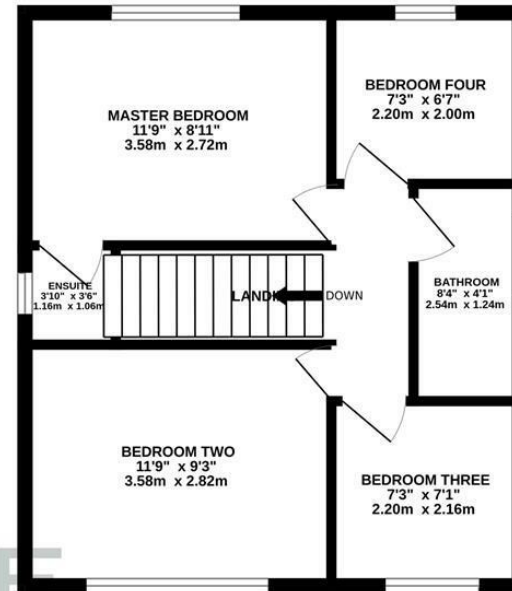




GROUND FLOOR



1ST FLOOR



Whilst every attempt has been made to ensure the accuracy of the floorplan contained here, measurements of doors, windows, rooms and any other items are approximate and no responsibility is taken for any error, omission or mis-statement. This plan is for illustrative purposes only and should be used as such by any prospective purchaser. The services, systems and appliances shown have not been tested and no guarantee as to their operability or efficiency can be given.  
Made with Metropix ©2024

