



GUIDE PRICE £229,950
SOUTH STREET, BARROW UPON SOAR,


REZIDE
GROUP



Rezide is delighted to present this charming two-bedroom character property nestled in the heart of the picturesque village of Barrow upon Soar and is available with NO CHAIN. Boasting a delightful blend of traditional features and modern amenities, this residence offers a warm and inviting atmosphere. Situated on South Street, in close proximity to the village centre, this double-fronted and symmetrical home captures attention with its beautiful curb appeal.



Upon entering through the composite glazed door into the welcoming hallway, you are greeted with an immediate sense of comfort. The hallway features an under-stairs storage cupboard, providing practicality alongside its aesthetic charm. To the right, a generously sized lounge awaits, adorned with jewel aspect windows to both front and rear, carpeted flooring, and an eye-catching cast-iron feature fireplace. Original timber doors add a touch of character to this inviting space.

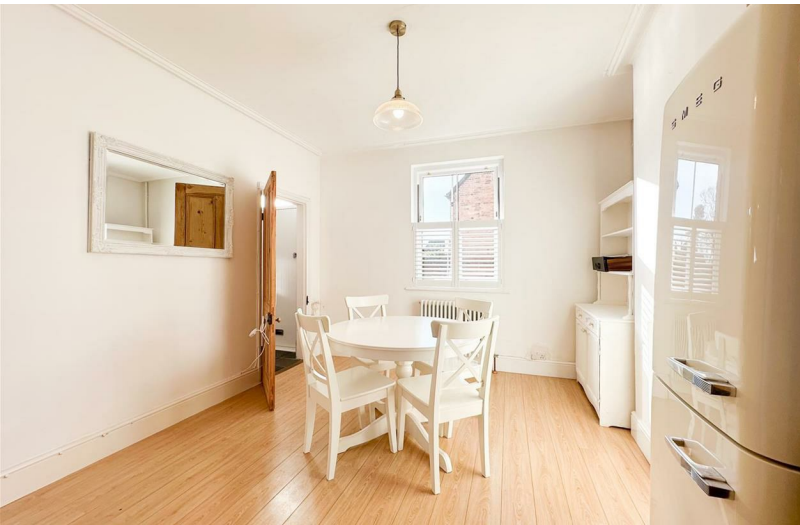
On the left side of the entrance hall, the open-plan kitchen and dining area beckon. With timber-effect laminate flooring, dual-aspect windows with shutters, and a well-designed layout, this space seamlessly combines functionality and style. The kitchen is equipped with a range of wall and base storage units, complemented by laminate work surfaces. A low-level double oven with a hob, extractor, stainless steel sink, and ample space for a fridge-freezer complete the kitchen's practicality.





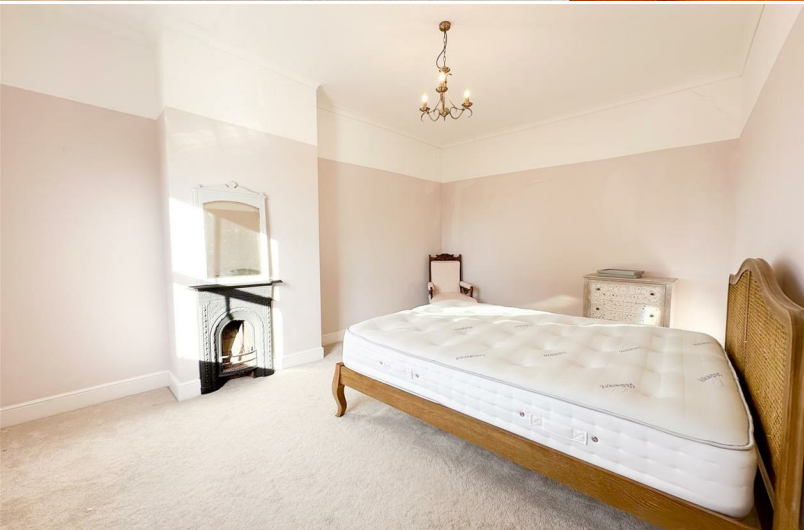


Continuing through the property, a timber door leads to a rear lobby connecting to the utility space. The utility area features additional storage cupboards and provisions for a washing machine and dryer, with a glazed door opening onto the garden. Adjacent to the utility, a versatile rear reception room with a voltage ceiling skylight and windows to the rear can serve as an additional living space or a potential downstairs bedroom. Conveniently positioned to the left is the downstairs WC.



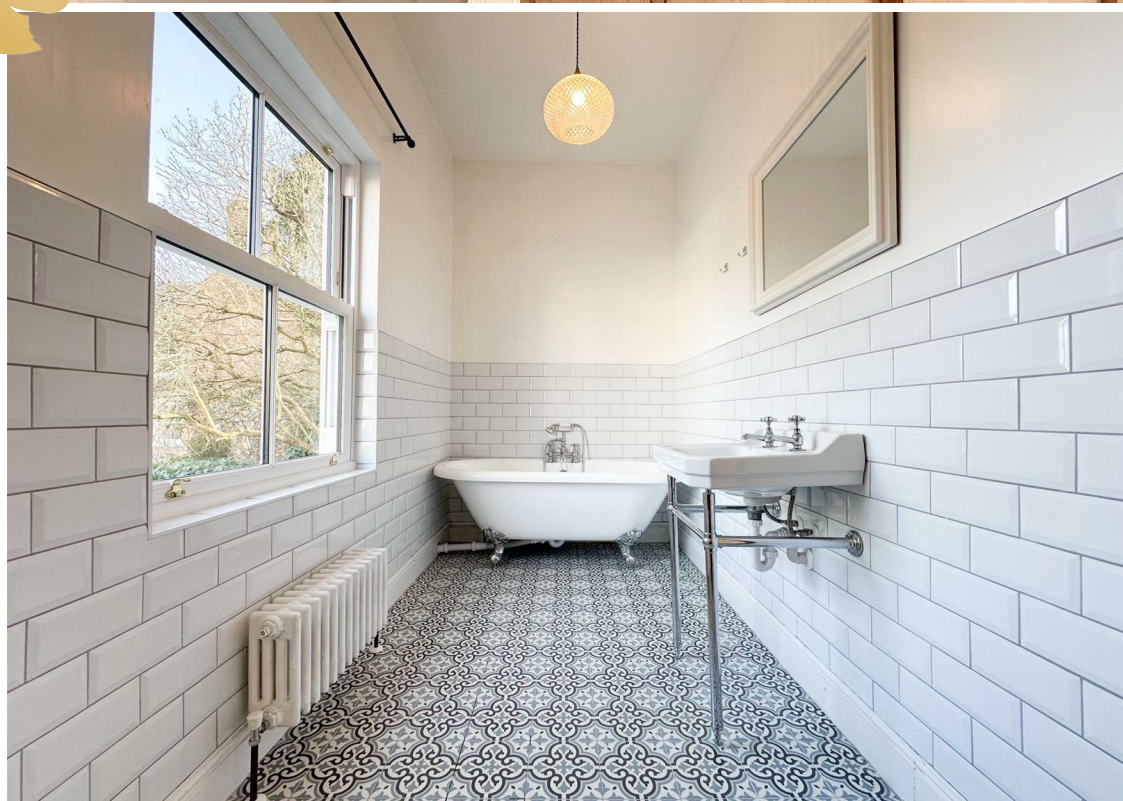
Ascending to the first floor, two generously sized double bedrooms await. The master bedroom, located on the left-hand side, showcases an original cast-iron feature fireplace and a modern sash window bathing the room in natural light. The second bedroom, situated





on the right, benefits from a modern sash window offering picturesque views across rooftops to the front.

Completing the upper level, the beautifully refitted bathroom exudes elegance with its high-level WC flush, freestanding bath, and Victorian-style vanity wash basin. Victorian-style tiling on the floor and subway tiling on part walls add a classic touch to this generously sized space.





The property extends its charm to the outdoors, featuring a quaint rear garden with a small patio courtyard and steps leading up to a larger garden area. This space provides an ideal setting for entertaining family and friends during the summer months.

In summary, this characterful property in Barrow upon Soar offers a perfect blend of traditional charm and modern living, providing a comfortable and inviting home in a desirable village location.



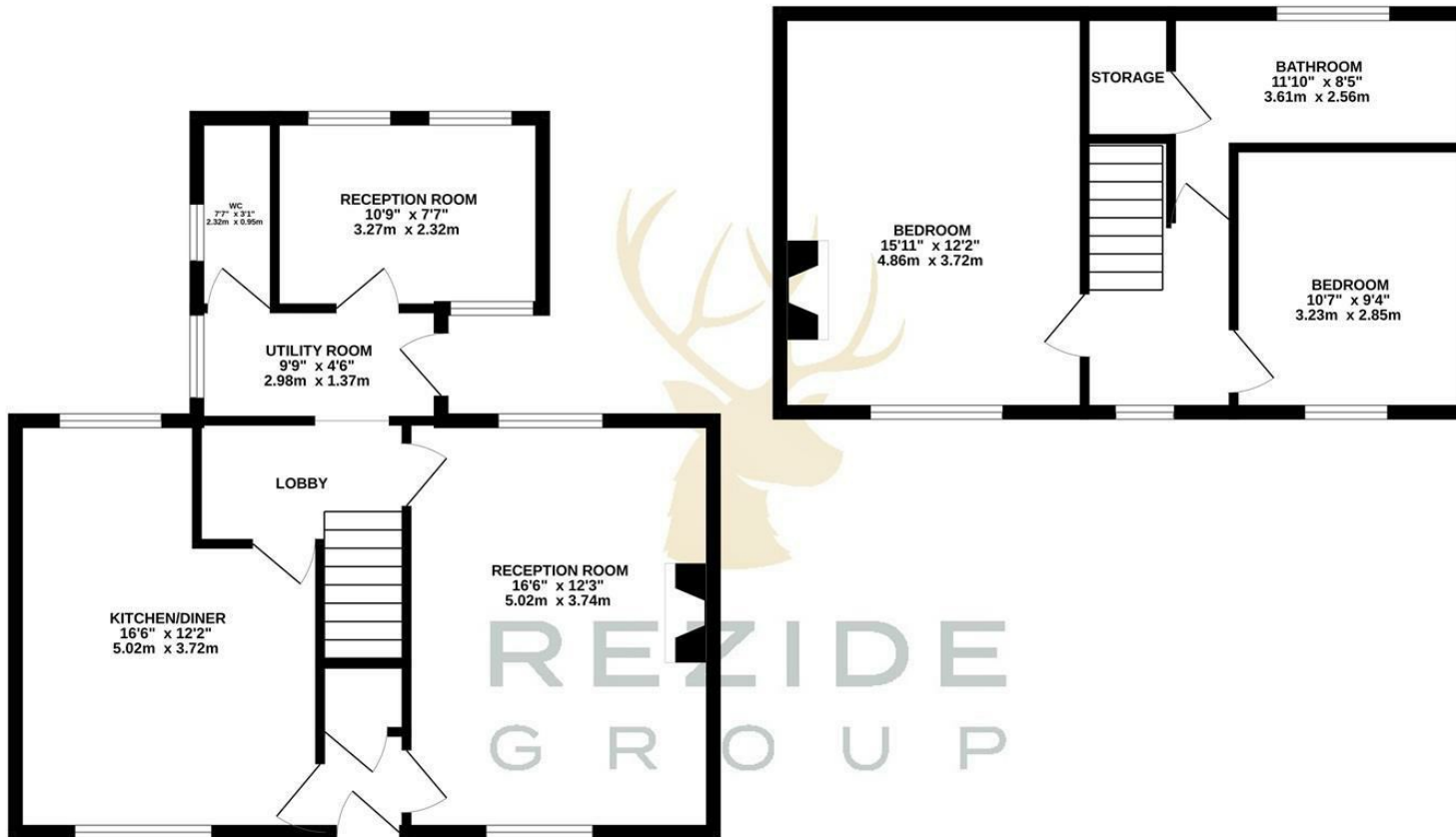




REZIDE
HERITAGE



STEEPED IN HISTORY



TOTAL FLOOR AREA : 1049 sq.ft. (97.4 sq.m.) approx.

Whilst every attempt has been made to ensure the accuracy of the floorplan contained here, measurements of doors, windows, rooms and any other items are approximate and no responsibility is taken for any error, omission or mis-statement. This plan is for illustrative purposes only and should be used as such by any prospective purchaser. The services, systems and appliances shown have not been tested and no guarantee as to their operability or efficiency can be given.

Made with Metropix ©2024

