



CARLA
VAN DEN BRINK

DE LAIRESSESTRAAT 9 III
AMSTERDAM

Beautiful light apartment of 110m² on one level on
the broad de Laïressestraat, with elevator.

*Estate Agency Carla van den Brink
loves the city of Amsterdam.
But maybe it loves the city's
inhabitants even more.*

*And one takes good care of one's
loved ones. That has been our credo
since 1979, and it will always
remain our credo.*



Patricia van Gulik
Register Makelaar Taxateur

T 06 34 227 002
Patricia@vandenbrink.nl





THE APARTMENT

Beautiful light apartment of 110m² on one level on the broad de Laressestraat with elevator, 2 bedrooms, 2 bathrooms en suite and a terrace at the rear and balcony at the front. In the middle of the wonderful Old South, around the corner from the Rijksmuseum and the many pleasant streets with numerous local shops, restaurants, boutiques and lunchrooms.



SURROUNDINGS

This beautiful apartment is centrally located in Amsterdam South on the broad de Lairessestraat, within walking distance of the Concertgebouw and around the corner of the Cornelis Schuytstraat with its many local shops, boutiques, restaurants and terraces. Such as brasserie (and butcher shop) De Schuyt and brasserie Joffers, restaurant Verhulst, floral art Menno Kroon, bookshop Mulder, VISQUE fish store, the Organic food for You supermarket and Tom Ensink's fruit and vegetable shop. In the neighbourhood one will find restaurant George, Petit George, bar Carter and a lot more. Every Saturday there is the Zuidermarkt with delicious fresh organic products, on the Zuidermarktplein. The luxurious shopping streets PC Hoofdstraat and van Baerlestraat are a stone's throw away. For relaxation, the Vondelpark is just around the corner, and sports fanatics can indulge themselves at TrainMore or Saints and Stars. The center of Amsterdam and De Pijp can also be reached within a few minutes.



LAYOUT

The apartment is located on the 3rd floor and has the following layout: Main entrance on the ground floor. The elevator or stairs brings you to the 3rd floor. Entrance hall with access to all rooms. Separate toilet. The apartment is very practically laid out like a horseshoe around the stairwell.

The large living room has double doors to the balcony at the front and a large open kitchen with island and doors to the terrace at the rear.





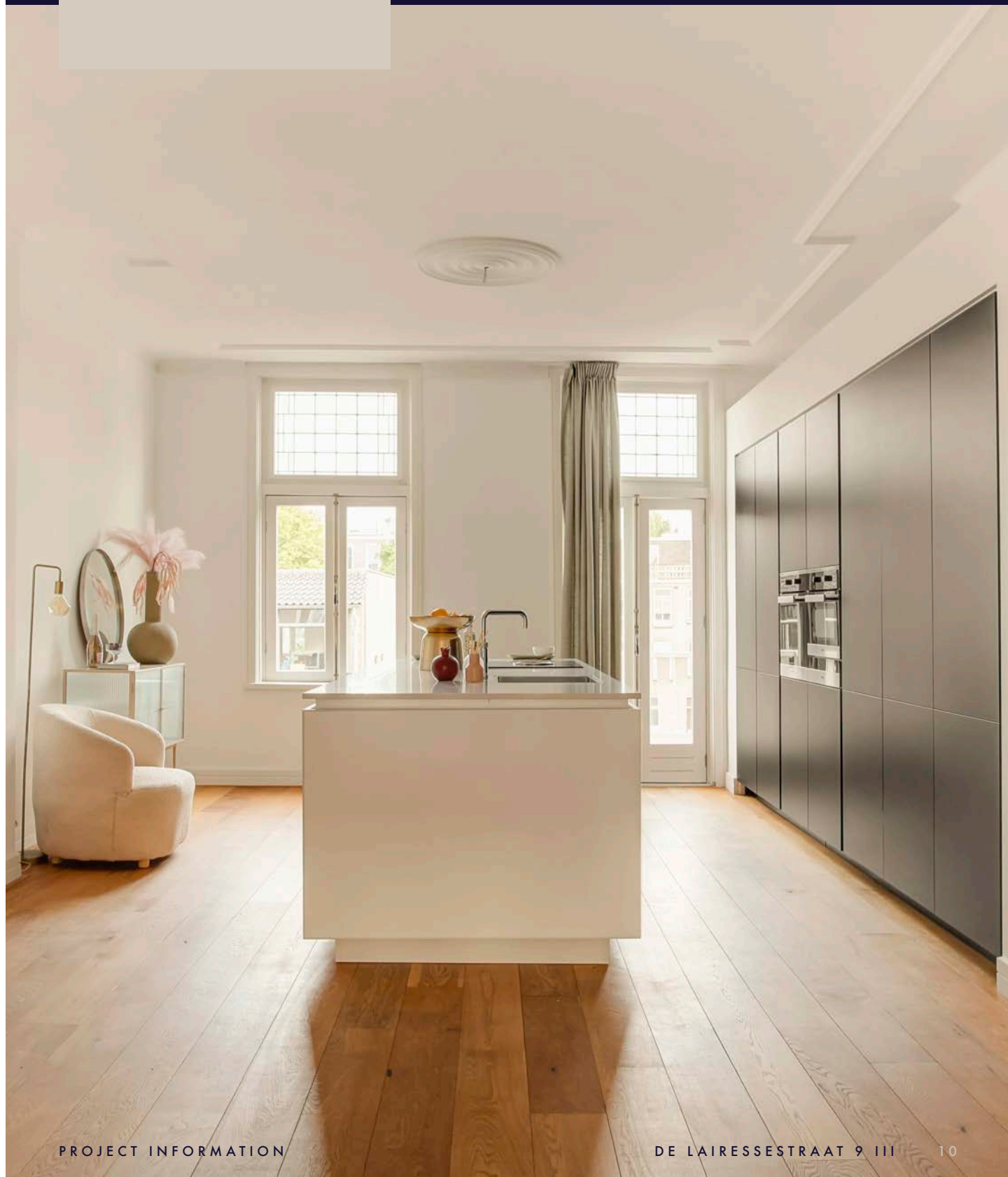




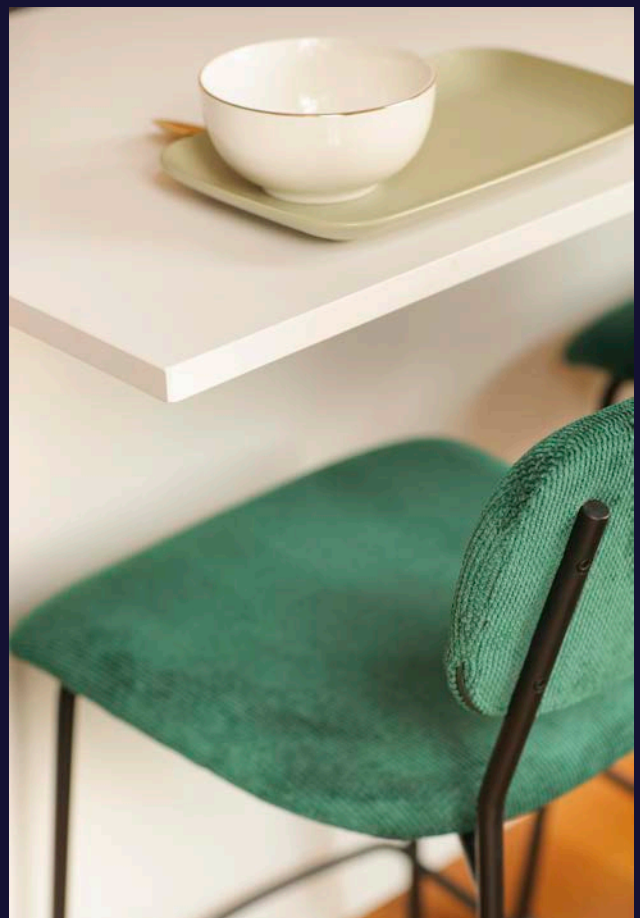
THE APARTMENT
IS VERY
PRACTICALLY LAID
OUT LIKE A HORSE-
SHOE AROUND
THE STAIRWELL

OPEN KITCHEN

The kitchen is equipped with all necessary appliances. Cooking is done on the island where also the sink is located.







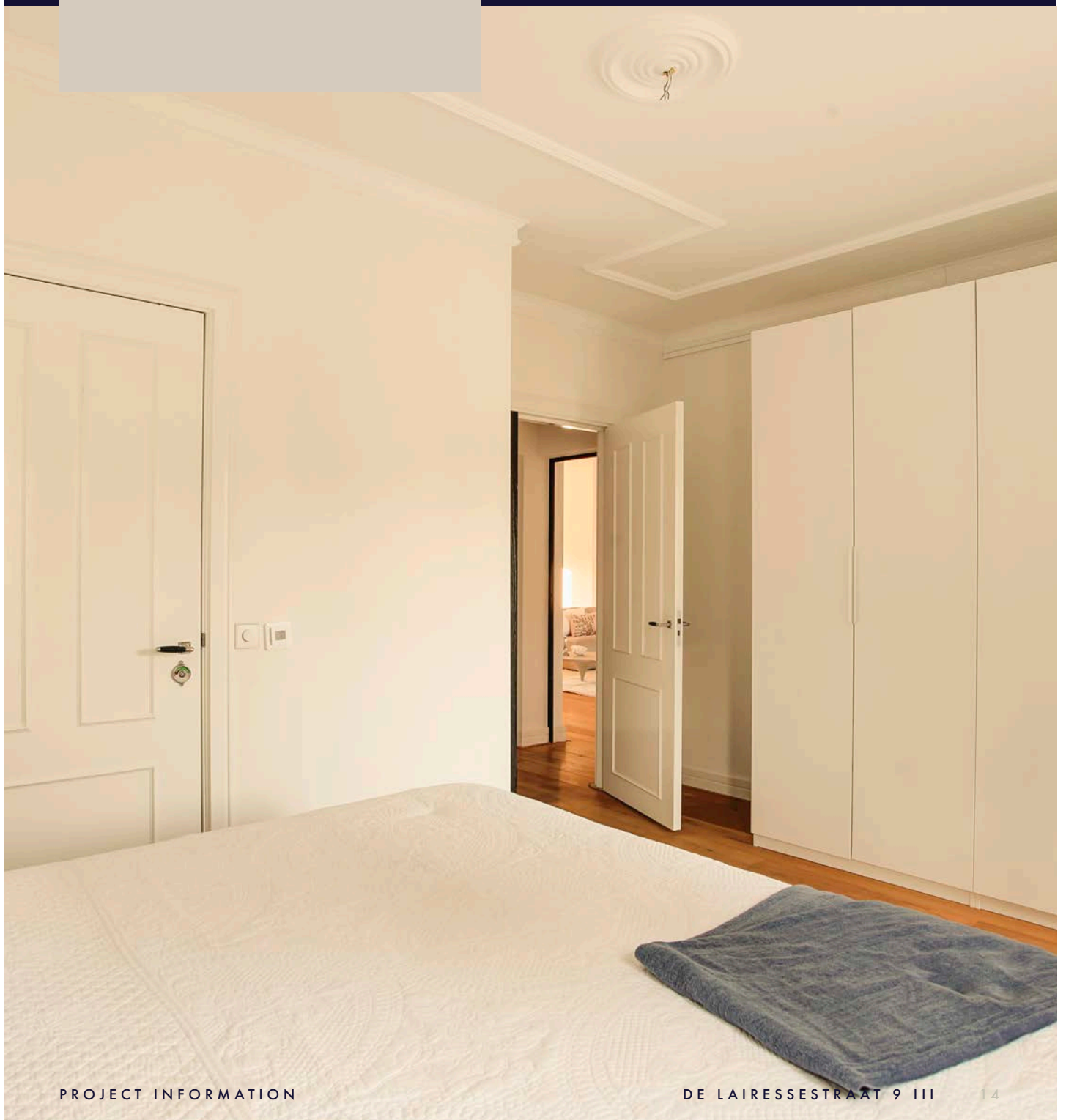


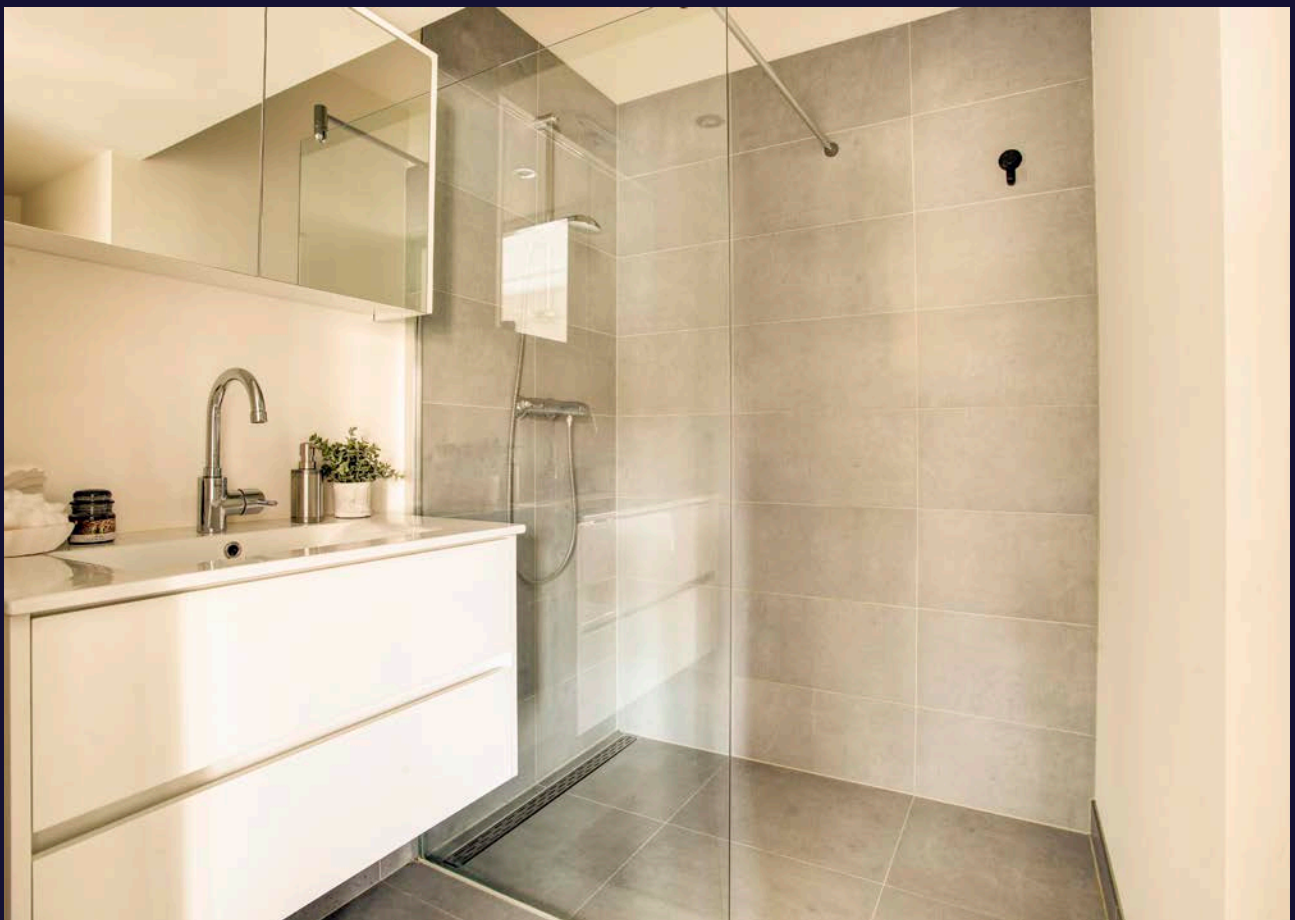
AT THE REAR IS
A LARGE OPEN KITCHEN
WITH DOUBLE DOORS
TO THE TERRACE

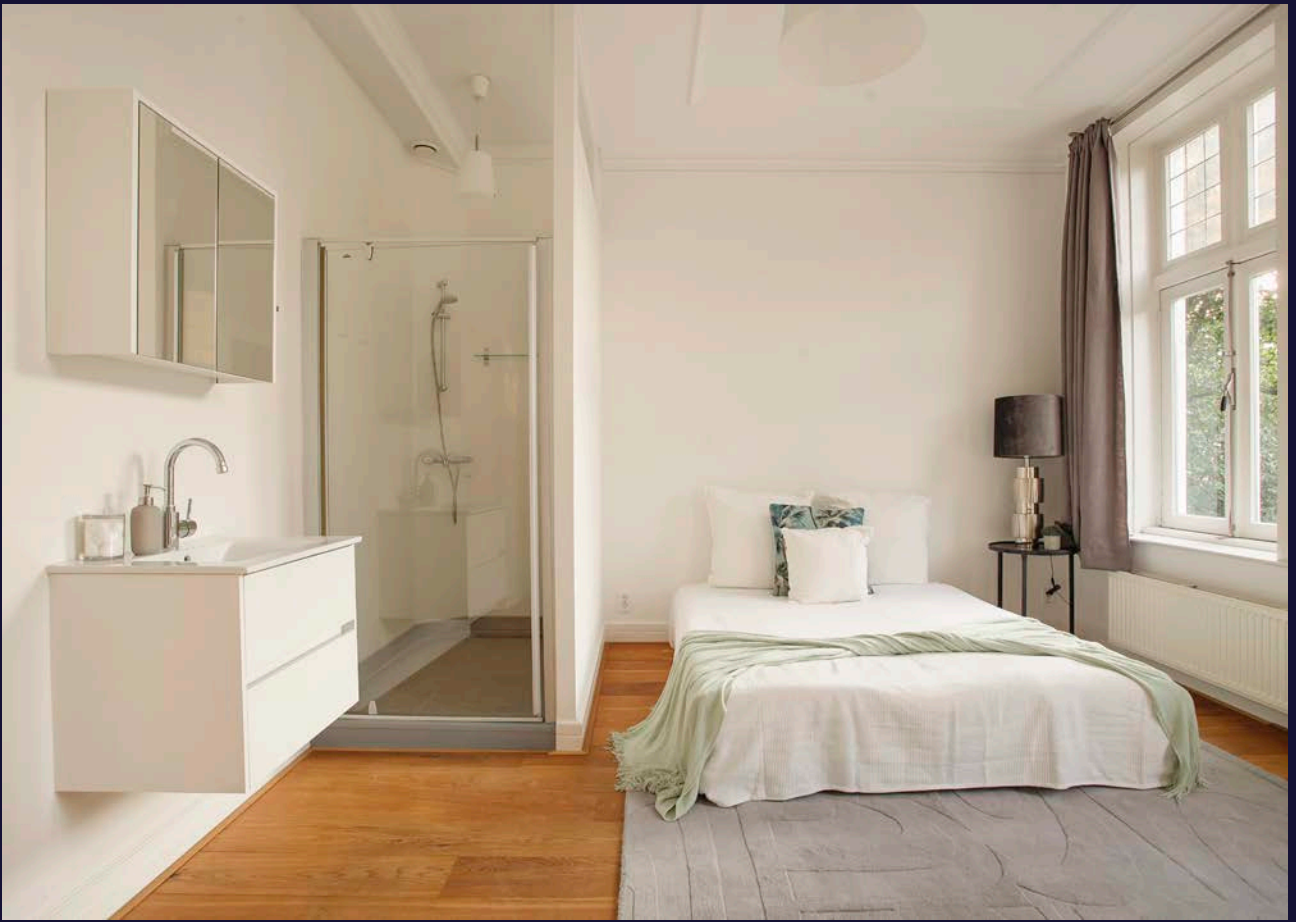
BEDROOMS

At the rear the first bedroom with open bathroom is situated. The bathroom has a large shower, sink and connection for washing machine and dryer.

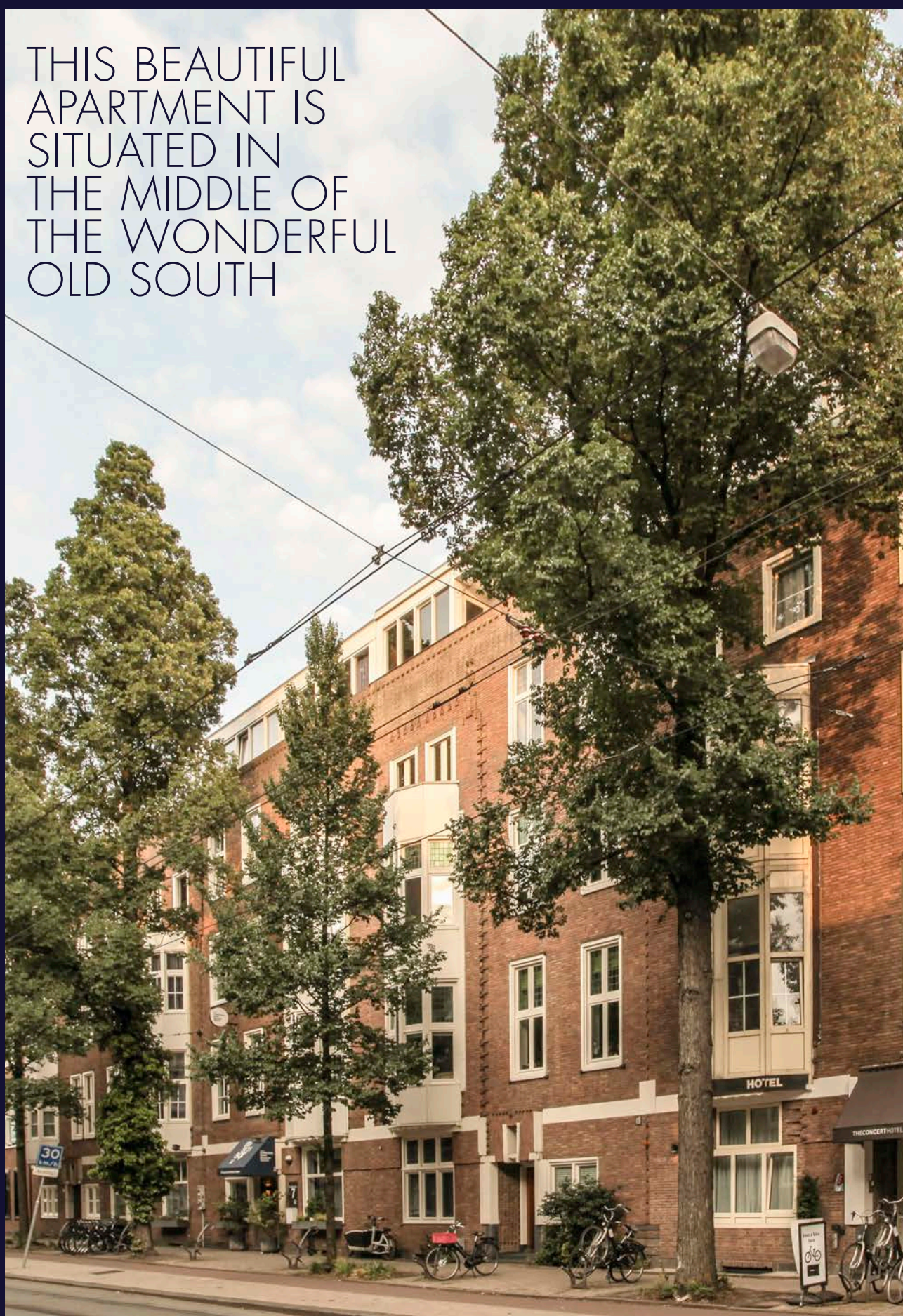
At the front is the 2nd bedroom with separate closet space situated, also with open bathroom with shower and toilet.

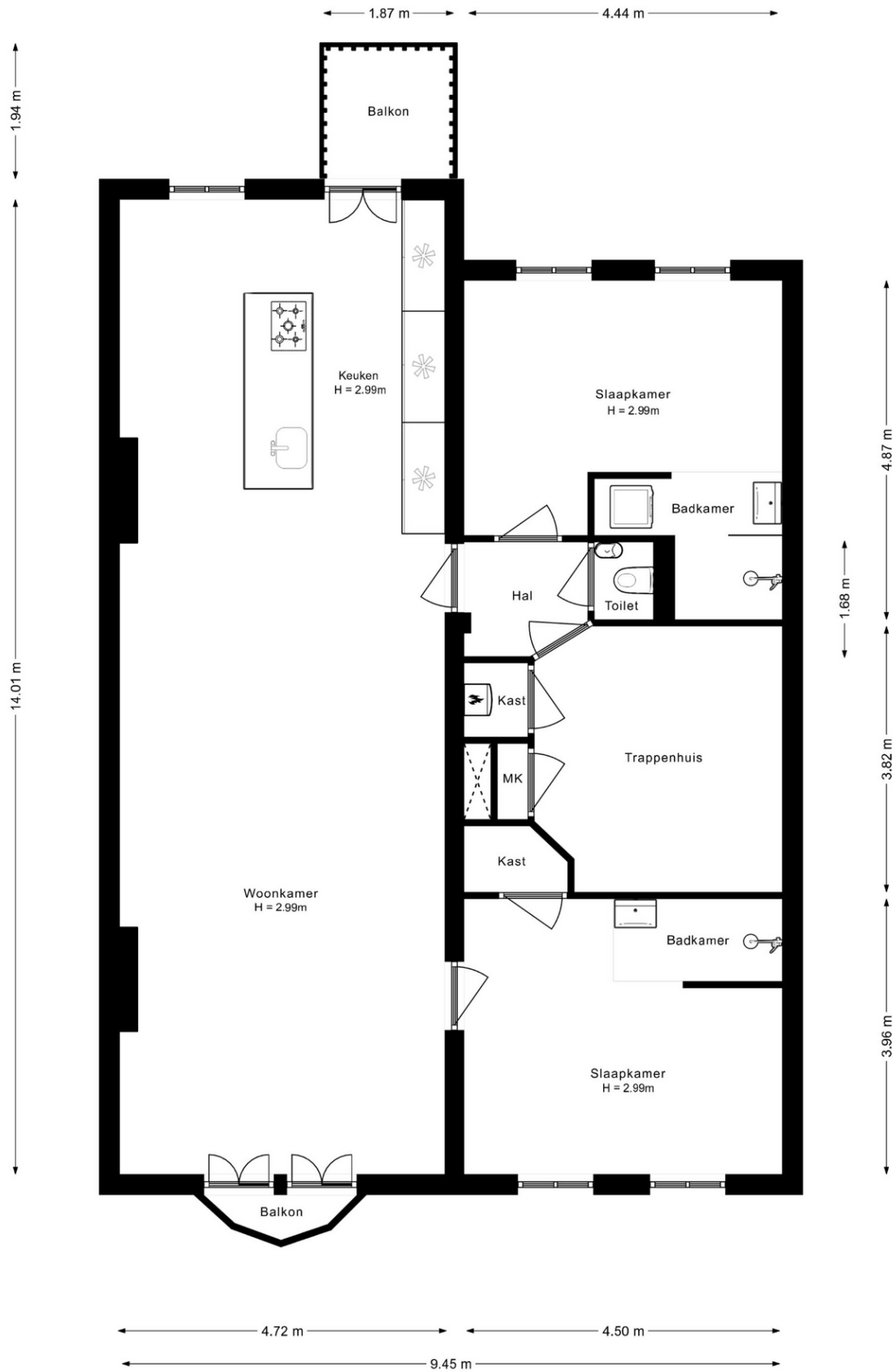






THIS BEAUTIFUL
APARTMENT IS
SITUATED IN
THE MIDDLE OF
THE WONDERFUL
OLD SOUTH





SPECIFICATIONS

OBJECT

Type	Apartment
Type	Upstairs apartment
Year of construction	1920
Current use	Living space
Current destination	Living

OUTDOOR SPACE

Balcony	Yes
---------	-----

DESTINATION

- + Destination of this property is living
- + There are similar homes in the area
- + Shops and public transport are within walking distance

PARTICULARITIES

- + Beautiful apartment on the third floor with elevator and balcony.
- + According to NEN2580 total area 110 m².
- + Terrace at the rear and balcony at the front.
- + Beautiful herringbone parquet throughout the entire apartment.
- + Recessed spotlights throughout the apartment.
- + Lift available, wheelchair friendly.
- + In the immediate vicinity of good (international) primary and secondary schools.
- + Professionally managed VvE. Small HOA.
- + Service costs VvE €210,- p.m.

CHARACTERISTICS

Living area	110 m ²
Number of rooms	3
Number of bedrooms	2
Content	365 m ³
Building-related outdoor space	5 m ²

CADASTRAL

Municipality	Amsterdam
Section	Z
Index number	A
Plot number	4
Share	103/706

MUNICIPALITY

- + No details known to the environmental service
- + No registrations known
- + No negative information known about the foundation

OWNERSHIP SITUATION

- + The house is located on leasehold land. The current period runs from May 1, 2009 to April 30, 2041

