



GREENDOOR
PROPERTY



136 Hitchin Road , Arlesey, SG15 6SA

A charming 2 bedroom, 2 bathroom end of terrace cottage with a cosy lounge and a separate dining room! The fitted kitchen comes with appliances and the home features gas central heating and double glazing throughout. Enjoy a large rear garden with a shed, perfect for outdoor relaxing or entertaining. Available now for long term rental. Council tax band B.

£1,200

136 Hitchin Road

, Arlesey, SG15 6SA



Lounge

12'0" x 10'3" (3.66 x 3.13)

Dining room

12'10" x 12'0" (3.93 x 3.67)

Kitchen

8'11" x 6'11" (2.74 x 2.11)

Ground floor bathroom

4'7" x 3'10" (1.40 x 1.18)

Bedroom One

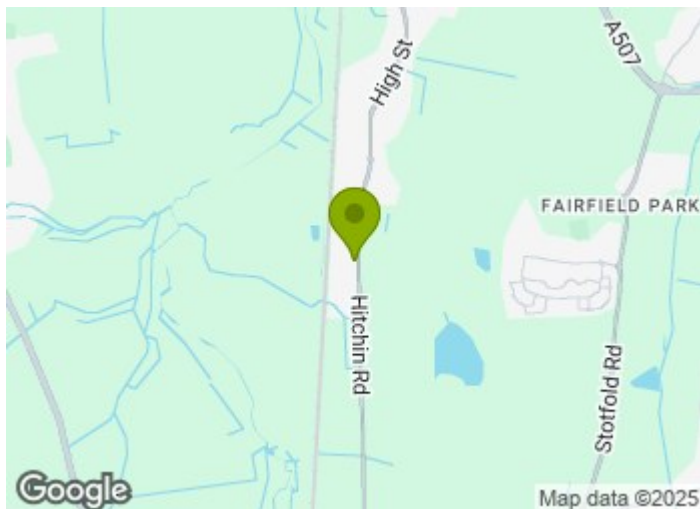
12'1" x 10'0" (3.69 x 3.07)

Bedroom two

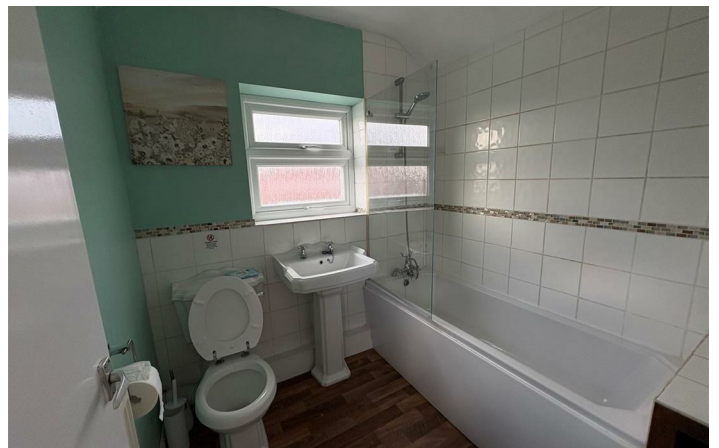
10'3" x 8'2" (3.14 x 2.49)

First floor bathroom

6'10" x 6'10" (2.10 x 2.09)



[Directions](#)



Every care has been taken with the preparation of these particulars, but complete accuracy cannot be guaranteed. If there is any point, which is of particular importance to you, please obtain professional confirmation. Alternatively, we will be pleased to check the information for you. These Particulars do not constitute a contract or part of a contract. All measurements quoted are approximate. The Fixtures, Fittings & Appliances have not been tested and therefore no guarantee can be given that they are in working order. Photographs are reproduced for general information and it cannot be inferred that any item shown is included in the sale.

