



## 31 Dove House Drive , Henlow, SG16 6DH

Situated in the charming village of Henlow is this delightful family home. With four generously sized double bedrooms, including a master suite complete with an ensuite bathroom, this property is designed for comfort and convenience. Each bedroom features built-in wardrobes, providing ample storage space for your family's needs.

The spacious lounge is a perfect gathering spot, enhanced by patio doors that lead directly to the rear garden, allowing for a seamless indoor-outdoor living experience. There is also a separate dining room, ideal for hosting family meals or entertaining guests. Additionally, a study provides a quiet space for work or study, catering to the demands of modern family life.

The large kitchen is well-equipped and includes a separate utility room, making household chores more manageable. This thoughtful layout ensures that the heart of the home is both functional and inviting.

Outside, the rear garden offers a private retreat, perfect for children to play or for enjoying summer barbecues. The property also boasts a garage and off-road parking.

Situated in a desirable village location, this home combines the tranquility of rural living with easy access to local amenities. This property is an excellent opportunity for families seeking a spacious and

**£1,900**

31 Dove House Drive  
, Henlow, SG16 6DH

 4

 2

 2

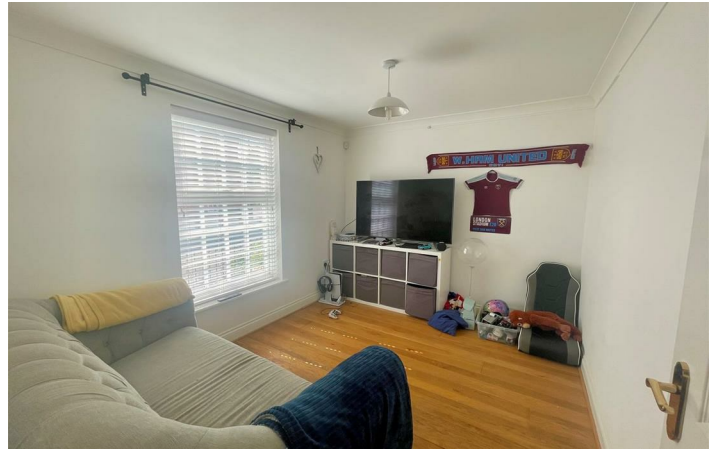
 C

<b>Lounge</b> 15'2" x 14'7" (4.63 x 4.45 )	<b>Bedroom two</b> 10'11" x 10'2" (3.35 x 3.10)
<b>Study</b> 7'0" x 9'0" (2.15 x 2.75 )	<b>Bedroom three</b> 8'7" x 10'0" (2.63 x 3.06)
<b>Dining room</b> 10'11" x 8'10" (3.35 x 2.70 )	<b>Bedroom four</b> 11'3" x 7'0" (3.43 x 2.15 )
<b>Kitchen</b> 13'4" x 10'11" (4.08 x 3.33)	<b>Bathroom</b> 6'2" x 9'9" (1.88 x 2.98 )
<b>Utility room</b> 5'6" x 6'1" (1.70 x 1.86 )	
<b>Bedroom one</b> 10'1" x 11'3" (3.08 x 3.44)	
<b>En-suite</b> 4'9" x 11'2" (1.46 x 3.42)	



Directions





Every care has been taken with the preparation of these particulars, but complete accuracy cannot be guaranteed. If there is any point, which is of particular importance to you, please obtain professional confirmation. Alternatively, we will be pleased to check the information for you. These Particulars do not constitute a contract or part of a contract. All measurements quoted are approximate. The Fixtures, Fittings & Appliances have not been tested and therefore no guarantee can be given that they are in working order. Photographs are reproduced for general information and it cannot be inferred that any item shown is included in the sale.

