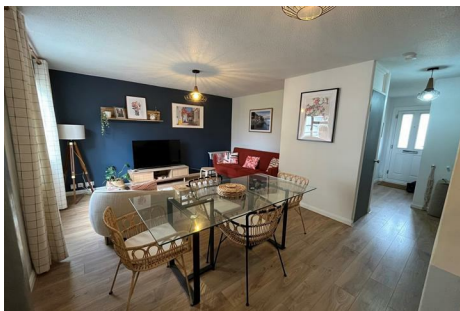




GREENDOOR
PROPERTY



39 Kyrkeby

, Letchworth Garden City, SG6 2PB

A beautifully presented 3 bedroom terraced house in Letchworth Garden City. The property comprises of, a modern kitchen, downstairs WC, spacious lounge/diner, three good sized bedrooms and a family bathroom. With an enclosed rear garden with nice seating area, viewing is highly recommended and pets are considered. Council Tax B.

Available June 2025

£1,550 Per month

39 Kyrkeby
, Letchworth Garden City, SG6 2PB

 3

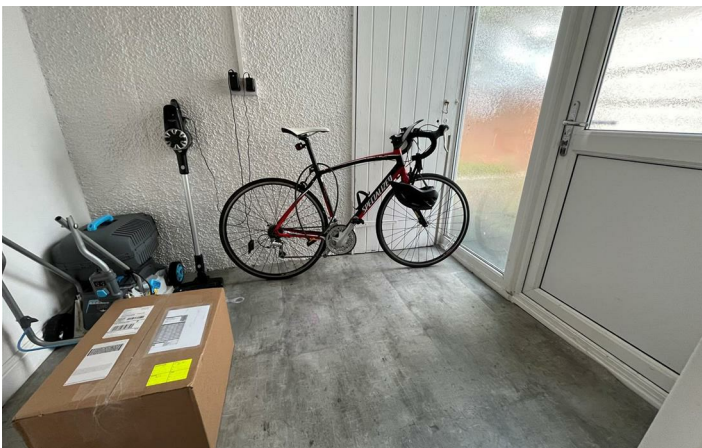
 1

 1

 C



[Directions](#)



Every care has been taken with the preparation of these particulars, but complete accuracy cannot be guaranteed. If there is any point, which is of particular importance to you, please obtain professional confirmation. Alternatively, we will be pleased to check the information for you. These Particulars do not constitute a contract or part of a contract. All measurements quoted are approximate. The Fixtures, Fittings & Appliances have not been tested and therefore no guarantee can be given that they are in working order. Photographs are reproduced for general information and it cannot be inferred that any item shown is included in the sale.

