



GREENDOOR
PROPERTY



69a High Street

Stotfold, Hitchin, SG5 4LD

One bedroom unfurnished first floor flat centrally located close to local amenities situated just off the High Street within a short drive of the A1(M). The property is newly re-decorated and re-carpeted and comprises of a Lounge, modern fitted kitchen with electric oven, hob and fridge and a double bedroom with en-suite shower room.

The property benefits from UPVC double glazing and electric storage heating.

Available Now. Council Tax A

£750

69a High Street

Stotfold, Hitchin, SG5 4LD



Lounge

11'1" (max x 11'1" (3.4 (max x 3.4)

Kitchen

10'5" x 4'11" (3.2 x 1.5)

Hallway

11'1" x 3'11" (3.4 x 1.2)

Bedroom

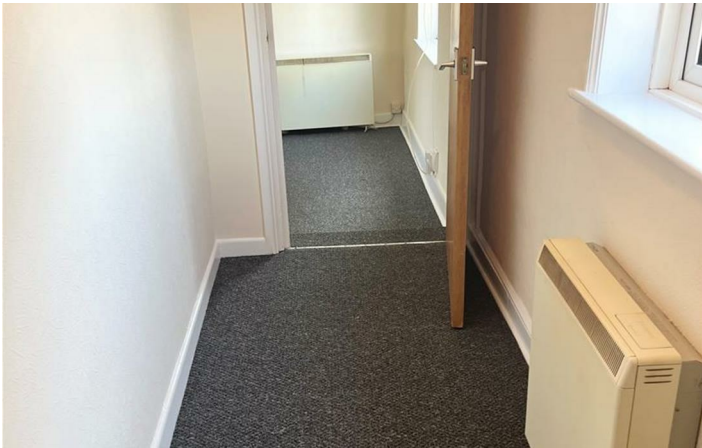
12'1" x 7'10" (3.7 x 2.4)

Bathroom

2'11" x 7'10" (0.9 x 2.4)



Directions



Every care has been taken with the preparation of these particulars, but complete accuracy cannot be guaranteed. If there is any point, which is of particular importance to you, please obtain professional confirmation. Alternatively, we will be pleased to check the information for you. These Particulars do not constitute a contract or part of a contract. All measurements quoted are approximate. The Fixtures, Fittings & Appliances have not been tested and therefore no guarantee can be given that they are in working order. Photographs are reproduced for general information and it cannot be inferred that any item shown is included in the sale.

