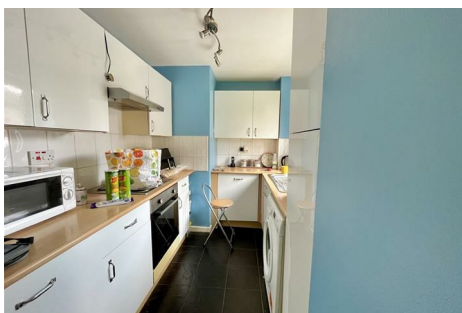




GREENDOOR

PROPERTY MANAGEMENT



7 Wycklond Close

Stotfold, Hitchin, SG5 4JP

Located in the heart of Stotfold. Ground floor flat. Two double bedrooms. Kitchen with white goods. Allocated off road parking space. Outside area. Available 1st June. Council Tax Band B

£995 Per month

7 Wycklond Close

Stotfold, Hitchin, SG5 4JP



LOUNGE

14'5" x 13'5" (4.4 x 4.1)

KITCHEN

12'1" x 7'2" (3.7 x 2.2)

HALLWAY

15'5" x 2'7" (4.7 x 0.8)

BEDROOM ONE

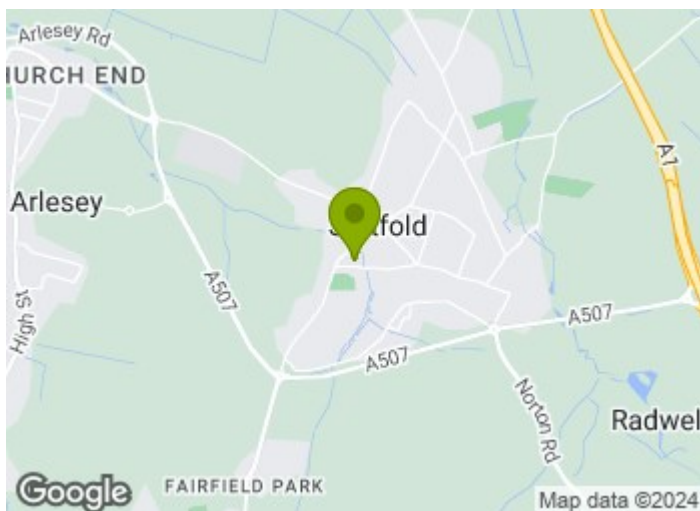
9'2" x 9'6" (2.8 x 2.9)

BEDROOM TWO

7'2" x 10'2" (2.2 x 3.1)

BATHROOM

5'6" x 6'10" (1.7 x 2.1)



[Directions](#)



Floor Plan

These particulars, whilst believed to be accurate are set out as a general outline only for guidance and do not constitute any part of an offer or contract. Intending purchasers should not rely on them as statements of representation of fact, but must satisfy themselves by inspection or otherwise as to their accuracy. No person in this firm's employment has the authority to make or give any representation or warranty in respect of the property.

