

DURDEN & HUNT

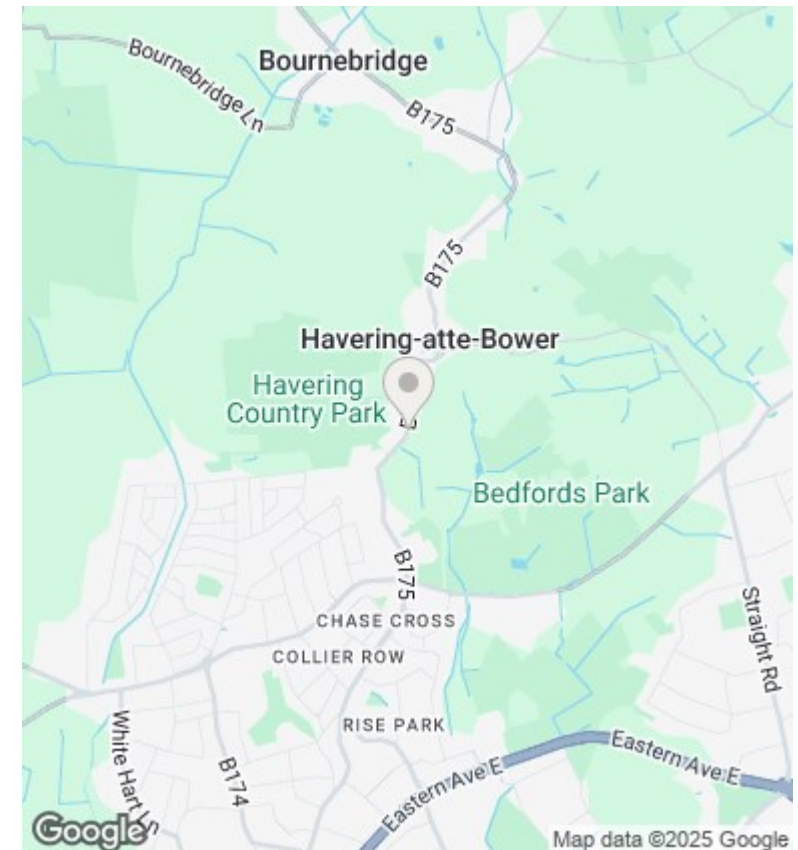
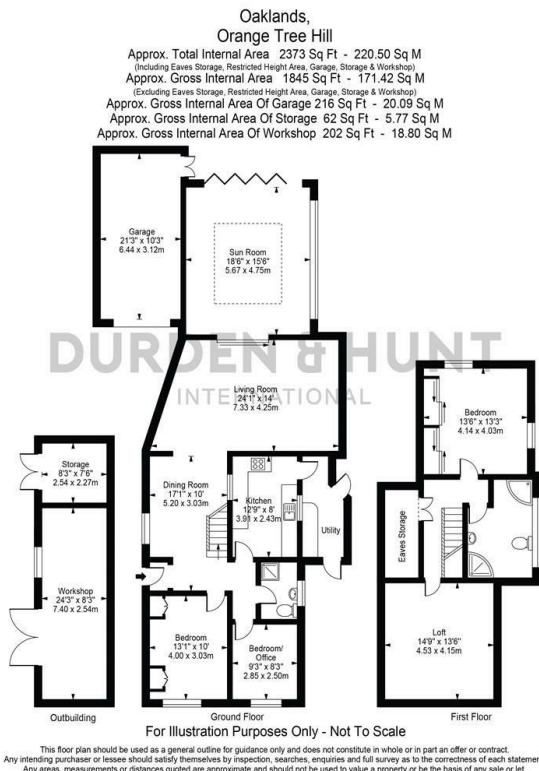
INTERNATIONAL



Orange Tree Hill, Romford RM4

£750,000

- Countryside Location
- Opportunity For Downstairs Living
- Home Office And Utility Room
- Large Garden
- Spacious Sun Room
- Three Bedrooms
- Off Road Parking
- Multiple Reception Rooms
- Contemporary Family Bathroom



Viewings

Viewings by arrangement only.
Call 01277402068 to make an appointment.

Council Tax Band

E

EPC Rating:

D

Energy Efficiency Rating		
	Current	Potential
Very energy efficient - lower running costs		
(92-plus) A		
(81-91) B		75
(69-80) C		
(55-68) D	55	
(39-54) E		
(21-38) F		
(1-20) G		
Not energy efficient - higher running costs		
England & Wales	EU Directive 2002/91/EC	