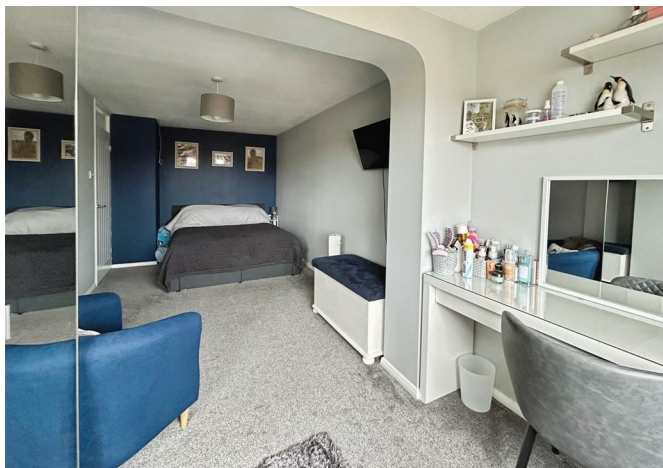




8 Wrentham Avenue, Herne Bay, CT6 7UU
Offers over £350,000



8 Wrentham Avenue, Herne Bay, CT6 7UU

Offers over £350,000

Spacious 4-Bedroom Family Home – Offers Between £350,000 - £370,000

Situated in a popular and convenient location, this generously sized four-bedroom home offers the perfect blend of space, style, and functionality – making it an excellent choice for families or those looking to upsize.

The property features a modern, low-maintenance garden, ideal for relaxing or entertaining, with stylish finishes that complement the overall contemporary feel of the home. Inside, you'll find well-proportioned rooms throughout, including multiple reception areas and four comfortable bedrooms – offering flexibility for family living, working from home, or guests.

With ample parking, there's plenty of space for multiple vehicles – a real bonus in this area. The home is beautifully presented and ready to move into, while still offering potential for buyers to add their own personal touch.

Located close to local amenities, schools, and transport links, this home combines practicality with modern comfort – all set within a welcoming neighbourhood.

This is a fantastic opportunity to secure a spacious and stylish home in a sought-after location.

Description

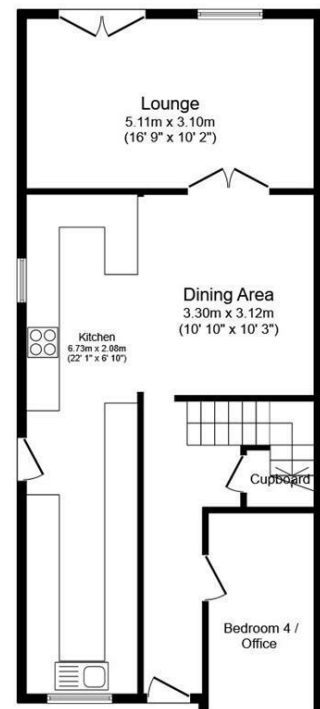
Agents Notes:

1. Money Laundering Regulations: Please note all sellers and intended purchasers will receive an 'On Boarding' link to verify their identity. This is a legal requirement before a sale or purchase proceeding.
2. All measurements stated on our details and floorplans are approximate, cannot be relied upon, and do not form part of any contracts.
3. Zest Homes have not tested any services, equipment, or appliances, and it is, therefore, the responsibility of any buyer/tenant to do so.
4. Photographs and marketing material are produced as a guide only, and legal advice should be sought to verify fixtures and fittings, planning, alterations, and lease details.
5. Zest Homes holds the copyright to all advertising material used to market this property.
6. It is the responsibility of the buyer to obtain verification of the legal title of the property via their solicitor.

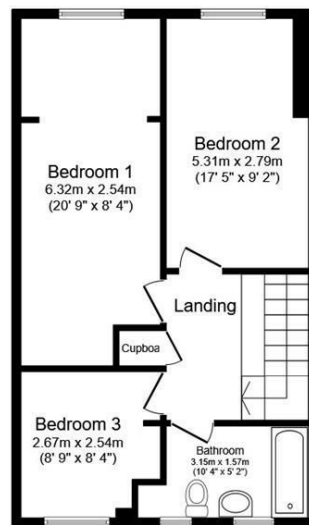
Situation

Herne Bay is a seaside town located in Kent, south-eastern England. The town is situated on the coast of the English Channel and is known for its safe bathing beaches, grand promenade, marina, pier, parks, and gardens. A number of popular attractions are located near the town, including Canterbury Cathedral, the White Cliff's of Dover, and the stunning Sissinghurst Castle. Herne Bay is a popular destination for both locals and tourists. The town has a wide range of restaurants, pubs, independent shops, and entertainment venues. The town is also known for activities such as sailing, windsurfing, kite surfing, and kayaking.





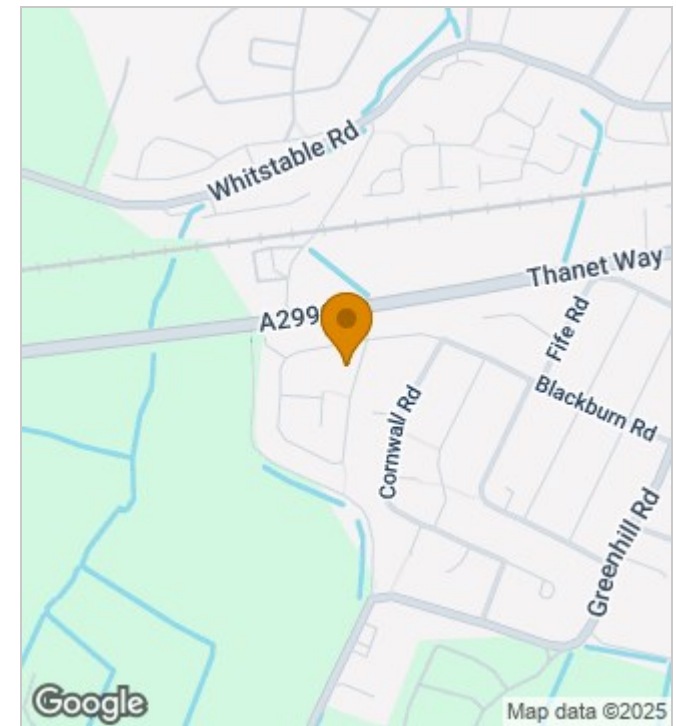
Ground Floor
Floor area 66.6 sq.m. (717 sq.ft.)



First Floor
Floor area 47.6 sq.m. (512 sq.ft.)

Total floor area: 114.1 sq.m. (1,228 sq.ft.)

This floor plan is for illustrative purposes only. It is not drawn to scale. Any measurements, floor areas (including any total floor area), openings and orientations are approximate. No details are guaranteed, they cannot be relied upon for any purpose and do not form any part of any agreement. No liability is taken for any error, omission or misstatement. A party must rely upon its own inspection(s). Powered by www.Propertybox.io



Energy Efficiency Rating

	Current	Potential
Very energy efficient - lower running costs		
(92 plus) A		
(81-91) B		82
(69-80) C	71	
(55-68) D		
(39-54) E		
(21-38) F		
(1-20) G		
Not energy efficient - higher running costs		
England & Wales	EU Directive 2002/91/EC	

190 High Street, Herne Bay, Kent, CT6 5AP
Tel: 01227 949291 | Email: sales@zesthomes.uk
www.zesthomes.uk

1. Money Laundering Regulations: Please note all sellers and intended purchasers will receive an 'On Boarding' link to verify their identity. This is a legal requirement prior to a sale or purchase proceeding.
2. All measurements stated on our details and floorplans are approximate and as such can not be relied upon and do not form part of any contracts.
3. Zest Homes have not tested any services, equipment or appliances and it is therefore the responsibility of any buyer/tenant to do so.
4. Photographs and marketing material are produced as a guide only and legal advice should be sought to verify fixtures and fittings, planning, alterations and lease details.
5. Zest Homes hold the copyright to all advertising material used to market this property.