



Q12 Seaview Holiday Park St. Johns Road, Whitstable, CT5 2RY
£27,000



Q12 Seaview Holiday Park St. Johns Road, Whitstable, CT5 2RY

For Sale: 2-Bedroom Park Home – £30,000

We are delighted to offer this beautiful 2-bedroom park home for sale, set at an affordable price of £30,000. Built in 2014 by renowned manufacturer Victory, this home is part of the Vision range, which is known for its contemporary design and practical layout.

The park home offers a spacious interior with a generous size of 35ft by 12ft, providing a comfortable living space for individuals, couples, or small families. The 2-bedroom layout is perfect for those looking for a relaxed lifestyle, and the home is fully equipped with all the essentials for modern living.

Whether you're looking for a quiet retreat or a more permanent home, this property is ideal. The home is in excellent condition and ready for immediate move-in. It is available to view by appointment, and we highly recommend arranging a visit to fully appreciate the space and quality on offer.

Priced at £30,000, this park home presents an excellent opportunity for anyone seeking affordable living in a peaceful setting. Don't miss out on this fantastic chance to own a well-maintained, stylish home at a competitive price.

This holiday is currently being used for business purposes, as an Air B&B which all information can be transferred

Description

Lounge/Kitchen
19'1" x 11'8"

Bedroom One
12'7" x 11'8"

Bedroom Two
11'1" x 8'5"

Bathroom
6'3" x 4'1"

Site Fees
2025 Pitch Fees £6750

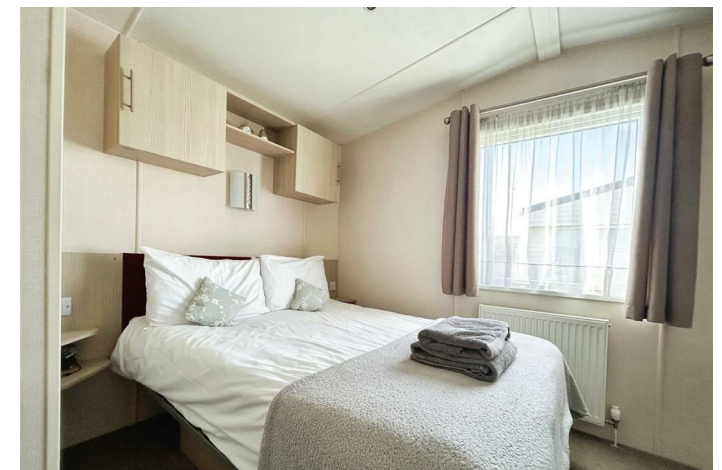
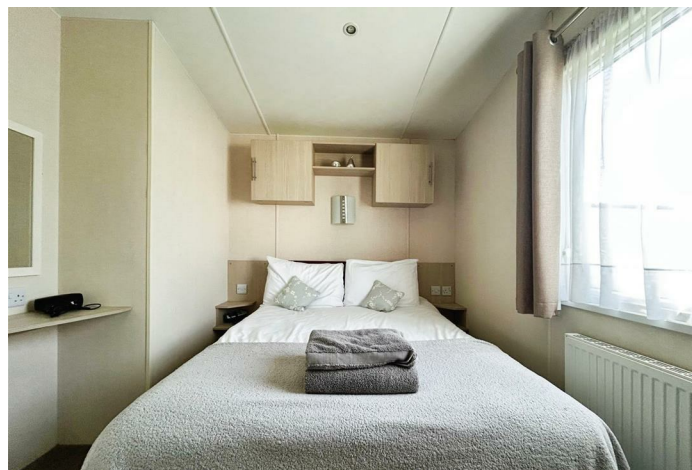
2025 Water/Rates £680

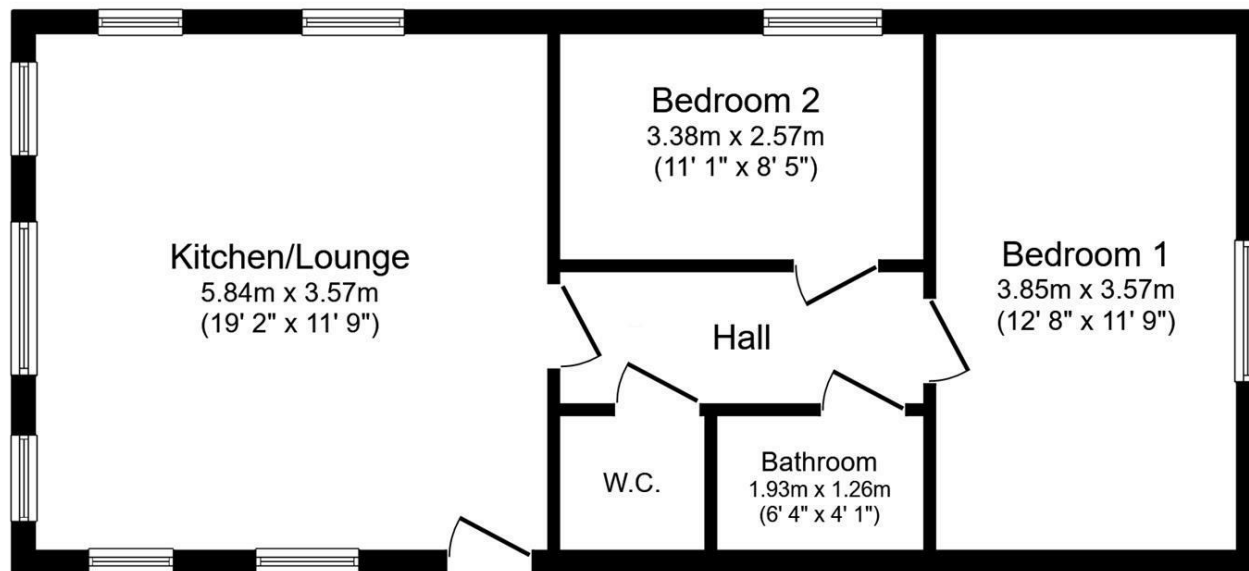
Estimated Electricity/Gas £400

Gas Bottles purchased Ad Hoc from the Site

Floorplan Clause

Please Note: Floor plan measurements provided in our marketing materials may differ from those stated in the EPC (Energy Performance Certificate). While EPCs include all floor areas, including circulation and non-habitable spaces, our measurements reflect only the main living areas to give a clearer representation of usable space.

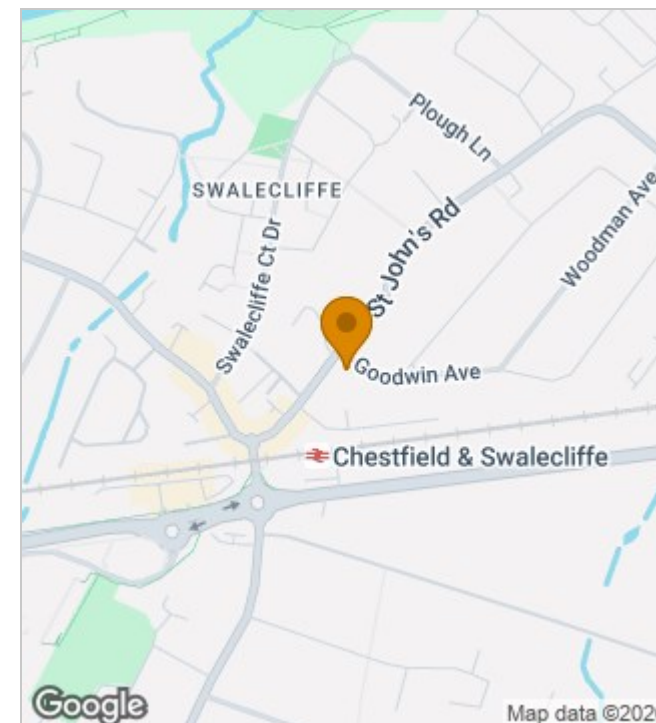




Floor Plan
Floor area 53.3 sq.m. (574 sq.ft.)

Total floor area: 53.3 sq.m. (574 sq.ft.)

This floor plan is for illustrative purposes only. It is not drawn to scale. Any measurements, floor areas (including any total floor area), openings and orientations are approximate. No details are guaranteed, they cannot be relied upon for any purpose and do not form any part of any agreement. No liability is taken for any error, omission or misstatement. A party must rely upon its own inspection(s). Powered by www.Propertybox.io



Energy Efficiency Rating

	Current	Potential
Very energy efficient - lower running costs		
(92 plus) A		
(81-91) B		
(69-80) C		
(55-68) D		
(39-54) E		
(21-38) F		
(1-20) G		
Not energy efficient - higher running costs		
England & Wales	EU Directive 2002/91/EC	

190 High Street, Herne Bay, Kent, CT6 5AP
Tel: 01227 949291 | Email: sales@zesthomes.uk
www.zesthomes.uk

1. Money Laundering Regulations: Please note all sellers and intended purchasers will receive an 'On Boarding' link to verify their identity. This is a legal requirement prior to a sale or purchase proceeding.
2. All measurements stated on our details and floorplans are approximate and as such can not be relied upon and do not form part of any contracts.
3. Zest Homes have not tested any services, equipment or appliances and it is therefore the responsibility of any buyer/tenant to do so.
4. Photographs and marketing material are produced as a guide only and legal advice should be sought to verify fixtures and fittings, planning, alterations and lease details.
5. Zest Homes hold the copyright to all advertising material used to market this property.