



**Sea View Holiday Park St. Johns Road, Whitstable, CT5 2RY**  
**£69,500**



## Sea View Holiday Park St. Johns Road, Whitstable, CT5 2RY £69,500

2023 Model Beverley Caravan: Perfect Getaway Retreat and Airbnb Opportunity.

We are excited to present this charming three-bedroom 2023 Model Beverley Caravan, ideal for those seeking a serene getaway retreat or a lucrative Airbnb investment. Located in the picturesque Seaview Holiday Park in Whitstable, Kent, this caravan is available for immediate occupation, just in time to enjoy the splendid summer weather.

Key Features

Model: 2023 Beverley

Bedrooms: 3

Dimensions: 40.00 feet in length and 12.00 feet in width

Availability: Immediate occupation

Pitch Fees 2025— £8095 —2025 Water/Rates £680—Estimated Electric/Gas £400

Perfect for Relaxation and Investment

This spacious three-bedroom caravan is designed to offer a comfortable and relaxing retreat. Whether you're looking to escape for a weekend or considering an Airbnb investment, this property offers flexibility and potential for both.

Seaview Holiday Park Amenities

## Description

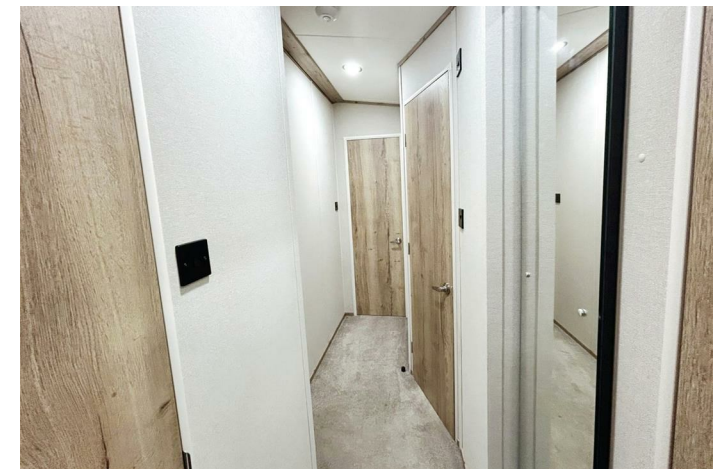
### Agents Notes:

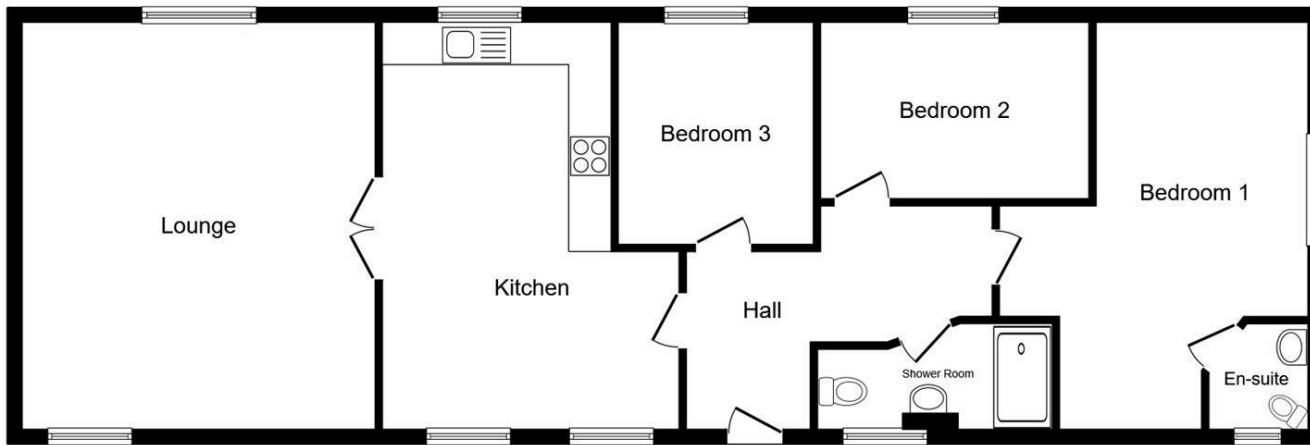
1. Money Laundering Regulations: Please note all sellers and intended purchasers will receive an 'On Boarding' link to verify their identity. This is a legal requirement prior to a sale or purchase proceeding.
2. All measurements stated on our details and floorplans are approximate and as such can not be relied upon and do not form part of any contracts.
3. Zest Homes have not tested any services, equipment or appliances and it is therefore the responsibility of any buyer/tenant to do so.
4. Photographs and marketing material are produced as a guide only and legal advice should be sought to verify fixtures and fittings, planning, alterations and lease details.
5. Zest Homes hold the copyright to all advertising material used to market this property.
6. It is the responsibility of the buyer to obtain verification of the legal title of the property via their solicitor.

For a free no obligation valuation of your property please contact the number quoted on the property brochure.

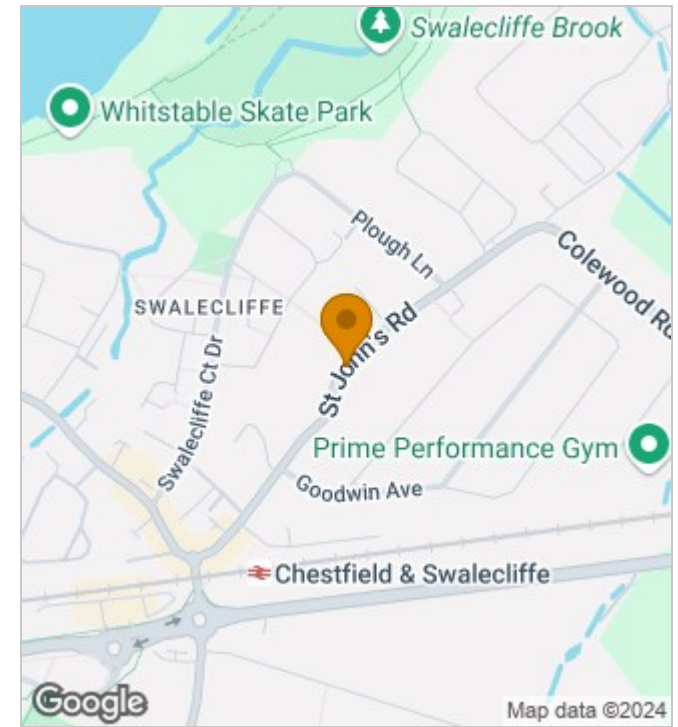
## Situation

Nestled along the stunning Kent coastline, Seaview Caravan Park in Whitstable offers a perfect blend of coastal charm and modern amenities. Owning a chalet in this picturesque setting provides an ideal retreat for those looking to escape the hustle and bustle of daily life. Whether you're seeking a holiday home, a weekend getaway, or a seasonal residence, Seaview Caravan Park presents an exceptional opportunity to enjoy the best of what Whitstable has to offer.





**Floor Plan**  
Floor area 104.9 m<sup>2</sup> (1,130 sq.ft.)



TOTAL: 104.9 m<sup>2</sup> (1,130 sq.ft.)

This floor plan is for illustrative purposes only. It is not drawn to scale. Any measurements, floor areas (including any total floor area), openings and orientations are approximate. No details are guaranteed, they cannot be relied upon for any purpose and do not form any part of any agreement. No liability is taken for any error, omission or misstatement. A party must rely upon its own inspection(s). Powered by [www.Propertybox.io](http://www.Propertybox.io)

190 High Street, Herne Bay, Kent, CT6 5AP  
Tel: 01227 949291 | Email: [sales@zesthomes.uk](mailto:sales@zesthomes.uk)  
[www.zesthomes.uk](http://www.zesthomes.uk)

1. Money Laundering Regulations: Please note all sellers and intended purchasers will receive an 'On Boarding' link to verify their identity. This is a legal requirement prior to a sale or purchase proceeding.
2. All measurements stated on our details and floorplans are approximate and as such can not be relied upon and do not form part of any contracts.
3. Zest Homes have not tested any services, equipment or appliances and it is therefore the responsibility of any buyer/tenant to do so.
4. Photographs and marketing material are produced as a guide only and legal advice should be sought to verify fixtures and fittings, planning, alterations and lease details.
5. Zest Homes hold the copyright to all advertising material used to market this property.