



Flat 4, 16 Norfolk Road, Margate, CT9 2HY
£160,000



Flat 4, 16 Norfolk Road, Margate, CT9 2HY £160,000

Embrace coastal living at its finest with this newly refurbished two-bedroom flat, nestled on Norfolk Road in the sought-after area of Cliftonville. Just a short, leisurely stroll to the seafront, this residence combines modern luxury with the timeless charm of the coastal lifestyle.

Contemporary Elegance: This home has undergone a comprehensive internal refurbishment, showcasing a perfect blend of modern aesthetics and classic comfort. Step into a space that exudes sophistication and a fresh, welcoming ambiance.

Versatile Living Spaces: The flat features a spacious lounge, creating an inviting area for relaxation or entertaining guests. The well-appointed kitchen offers both functionality and style, providing the perfect backdrop for culinary creativity.

Tranquil Bedrooms: Discover two bedrooms adorned with new carpets, offering a serene retreat for a good night's rest. Thoughtfully designed and tastefully decorated, these rooms elevate your living experience.

Modern Bathroom: The contemporary bathroom adds a touch of luxury, providing a rejuvenating space to unwind and refresh. Every detail has been carefully considered to enhance your daily routine.

Description

Zest Homes Sales and Lettings Ltd are pleased to offer this two bedroom first floor apartment located within walking distance of Cliftonville sea front.

Accommodation comprises of two bedrooms, kitchen, bathroom and living room.

The current tenants have lived in the property for some time and would like the opportunity to remain.

Tenure: Leasehold

Lease Details:

99 years from 17th June 2014

Ground Rent:

£150 per annum (doubling every 33 years)

Service Charge: TBC

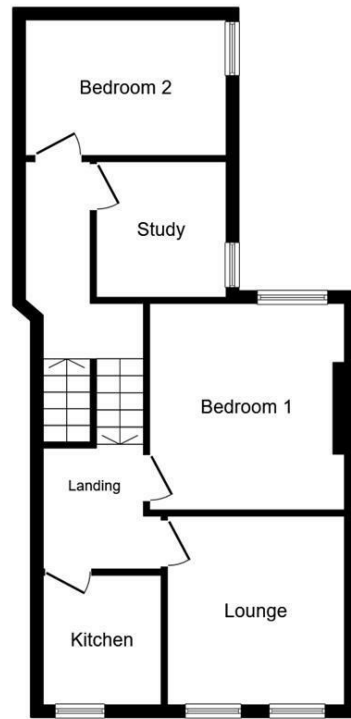
Council Tax Band: A

Situation

Norfolk Road, is located in the popular seaside town of Cliftonville, Margate.

Located approximately a 10 minute drive to neighbouring towns of Ramsgate, Broadstairs, and Birchington. The road links to London via the A299 Thanet Way and M2 Motorway are easily accessible

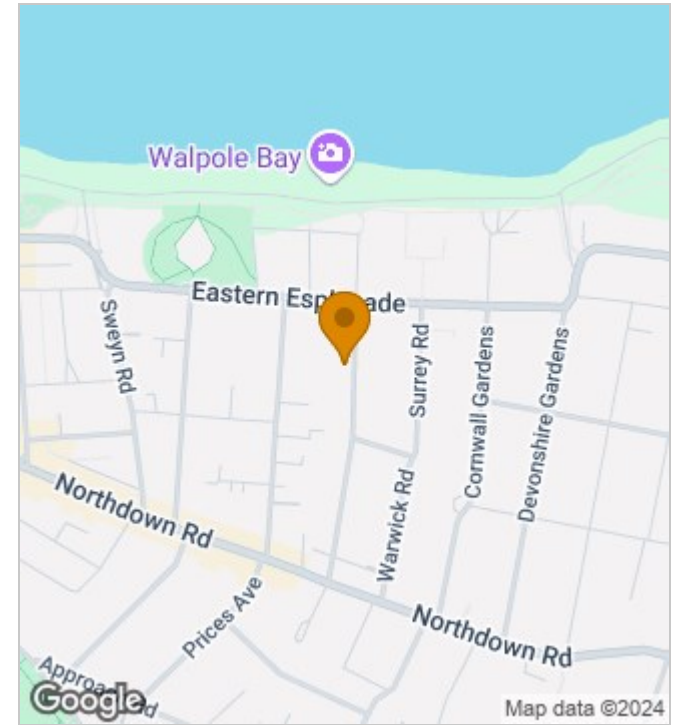




Floor Plan
Floor area 51.0 m² (549 sq.ft.)

TOTAL: 51.0 m² (549 sq.ft.)

This floor plan is for illustrative purposes only. It is not drawn to scale. Any measurements, floor areas (including any total floor area), openings and orientations are approximate. No details are guaranteed, they cannot be relied upon for any purpose and do not form any part of any agreement. No liability is taken for any error, omission or misstatement. A party must rely upon its own inspection(s). Powered by www.Propertybox.io



Energy Efficiency Rating		Current	Potential
Very energy efficient - lower running costs			
(92 plus) A			
(81-91) B			
(69-80) C			77
(55-68) D		64	
(39-54) E			
(21-38) F			
(1-20) G			
Not energy efficient - higher running costs			
England & Wales		EU Directive 2002/91/EC	

190 High Street, Herne Bay, Kent, CT6 5AP
Tel: 01227 949291 | Email: sales@zesthomes.uk
www.zesthomes.uk

1. Money Laundering Regulations: Please note all sellers and intended purchasers will receive an 'On Boarding' link to verify their identity. This is a legal requirement prior to a sale or purchase proceeding.
2. All measurements stated on our details and floorplans are approximate and as such can not be relied upon and do not form part of any contracts.
3. Zest Homes have not tested any services, equipment or appliances and it is therefore the responsibility of any buyer/tenant to do so.
4. Photographs and marketing material are produced as a guide only and legal advice should be sought to verify fixtures and fittings, planning, alterations and lease details.
5. Zest Homes hold the copyright to all advertising material used to market this property.