



4 Blackstable Court Canterbury Road, Whitstable, CT5 4RT
£645,000



4 Blackstable Court Canterbury Road, Whitstable, CT5 4RT £645,000

Welcome to Blackstable Court, a remarkable residence that exemplifies contemporary elegance and luxurious living. Nestled on Canterbury Road in the highly sought-after Whitstable, this exceptional property offers a one-of-a-kind lifestyle and a sense of tranquility. As you enter this prestigious home, you will be captivated by the grandeur and sophistication that emanates. The architecture seamlessly blends modern design with timeless charm, creating a captivating aesthetic that sets this home apart. Step through the front door, and you'll immerse yourself in a refined luxury world. The heart of this extraordinary property is the kitchen, a true masterpiece. Equipped with integrated appliances, sleek finishes, and ample storage, it effortlessly combines style and practicality. This kitchen will inspire with bi-folding doors, allowing alfresco dining and bringing the outdoors in. The main bedroom is ready for someone to put their stamp on, and the en suite was recently removed and awaiting someone to create their style. Offering three further spacious bedrooms. The exterior of this residence is equally impressive, with a garage/workshop giving ample space for an enthusiast needing space. With its attractive exterior, the current owners have created a modern feel as you approach the front. The rear garden is ready for someone to create a real masterpiece to create somewhere you can unwind and revel in your creation. From al fresco dinners under the stars to afternoon lounging, this outdoor retreat is perfect for enjoying the beauty of nature. This property is located in the esteemed Blackstable Court and offers more than just a beautiful home. It provides a gateway to the vibrant town of Whitstable, with its delightful boutiques, renowned restaurants, and charming harbour. Immerse yourself in the seaside lifestyle, strolling along the sandy beaches, indulging in fresh seafood, and experiencing the unique ambiance of Whitstable. Call one of our team today.

Description

Council Tax Band E
EPC Rating: B
Tenure Freehold

An opportunity to own a luxurious four-bedroom detached home located in the highly sought-after seaside town of Whitstable, Kent. This stunning property boasts an exceptional blend of modern design, high-quality finishes, and a prime location that offers the best of coastal living.

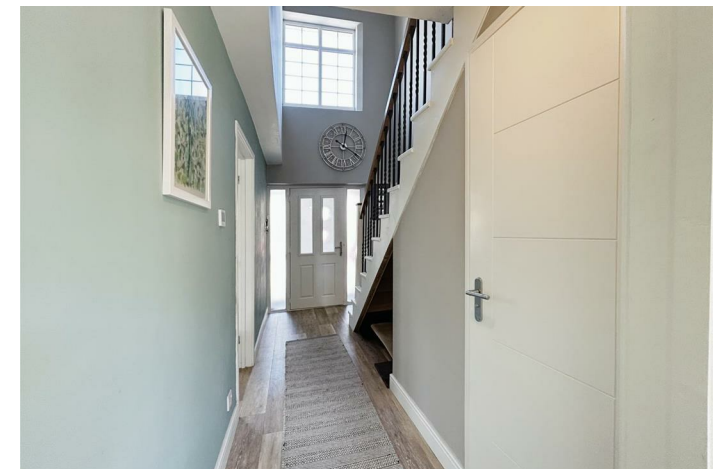
As you step inside, you are immediately greeted by a fabulous and stylish kitchen that will surely delight any culinary enthusiast. Equipped with top-of-the-line appliances and sleek countertops, this kitchen is a dream come true. The open-concept design seamlessly flows into the spacious family and dining room, creating the perfect atmosphere for both entertaining and everyday living.

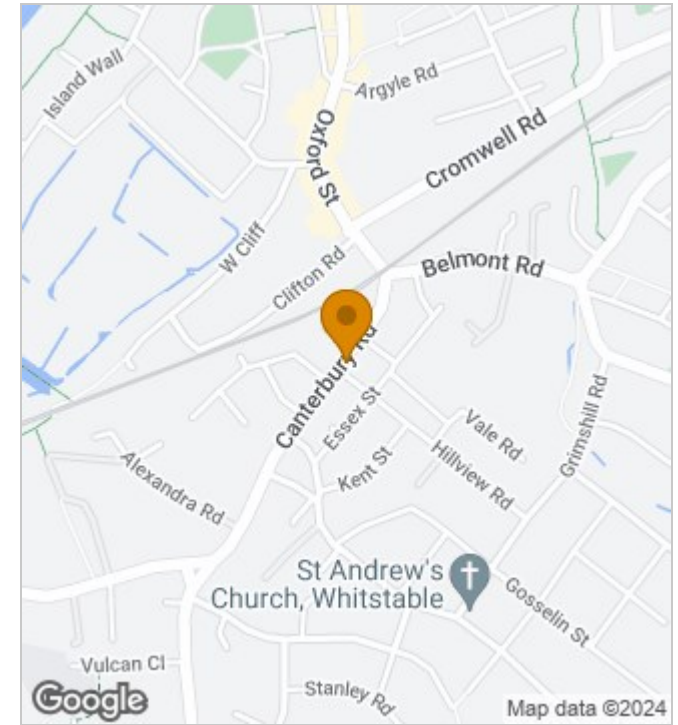
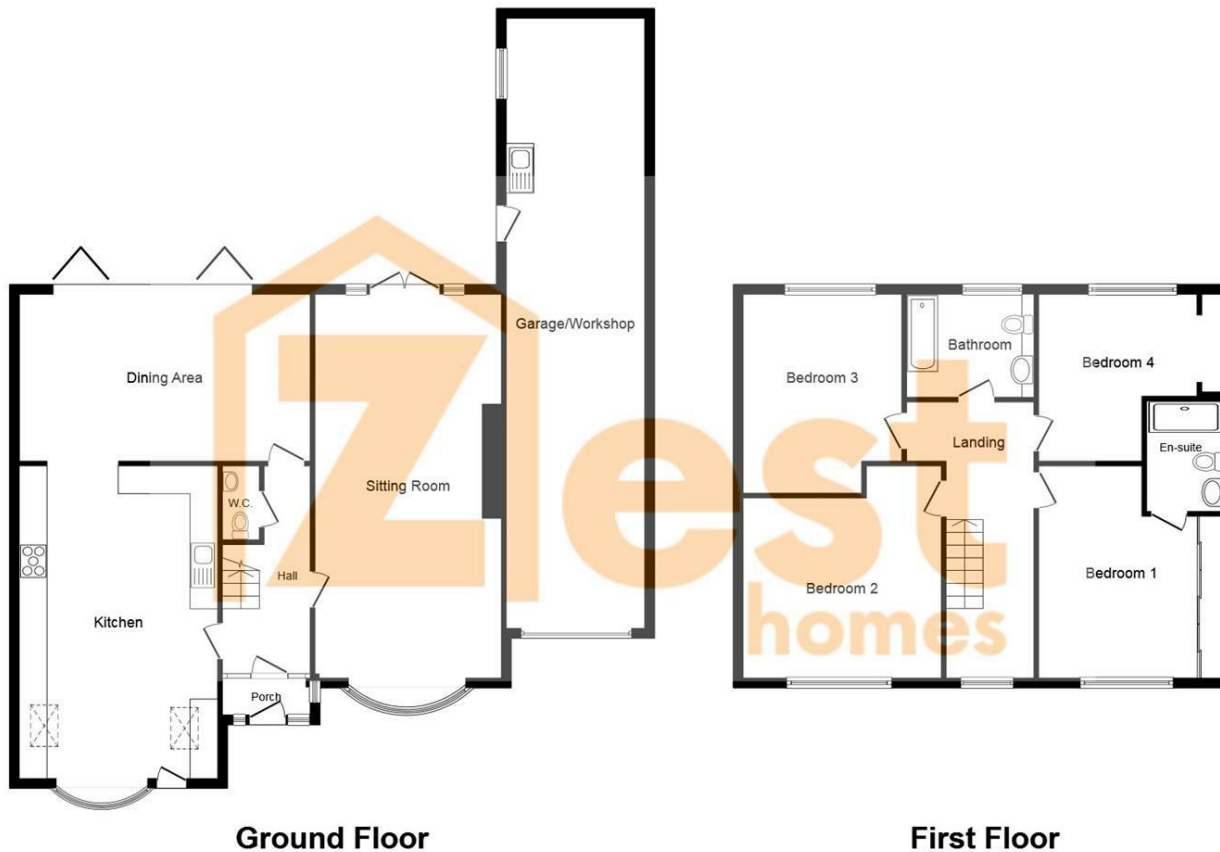
One of the standout features of this incredible property is the bi-folding doors that effortlessly open up into the garden. The integration of indoor and outdoor spaces allows for an abundance of natural light to flood the living areas while providing a seamless transition for al fresco dining and relaxing. It's the perfect spot to enjoy the beautiful views and soak in the tranquility of your surroundings.

With four generously sized bedrooms, this home offers ample space for family and guests, and a beautifully designed bathroom giving a luxurious feel.

Situation

Beyond the property itself, Whitstable offers a wealth of amenities and attractions. Known for its stunning coastline, vibrant arts scene, and quaint independent shops, this town embodies the idyllic seaside lifestyle. From charming cafes and restaurants to picturesque walks along the beach, there is always something to explore and enjoy in Whitstable. The town's working harbor, lined with colorful fishing boats, is a testament to its deep-rooted connection to the sea. Visitors can explore the bustling Whitstable Harbour Village, where they can indulge in fresh seafood, artisanal crafts, and a lively atmosphere.





Energy Efficiency Rating

	Current	Potential
Very energy efficient - lower running costs		
(92 plus) A		
(81-91) B	81	82
(69-80) C		
(55-68) D		
(39-54) E		
(21-38) F		
(1-20) G		
Not energy efficient - higher running costs		
England & Wales	EU Directive 2002/91/EC	

This plan is for illustration purposes only and may not be representative of the property. Plan not to scale. Powered by PropertyBox

190 High Street, Herne Bay, Kent, CT6 5AP
 Tel: 01227 949291 | Email: sales@zesthomes.uk
 www.zesthomes.uk

1. Money Laundering Regulations: Please note all sellers and intended purchasers will receive an 'On Boarding' link to verify their identity. This is a legal requirement prior to a sale or purchase proceeding.
2. All measurements stated on our details and floorplans are approximate and as such can not be relied upon and do not form part of any contracts.
3. Zest Homes have not tested any services, equipment or appliances and it is therefore the responsibility of any buyer/tenant to do so.
4. Photographs and marketing material are produced as a guide only and legal advice should be sought to verify fixtures and fittings, planning, alterations and lease details.
5. Zest Homes hold the copyright to all advertising material used to market this property.