

PARK FARM
SHOPPING CENTRE
ALLESTREE

**VARIOUS
RETAIL UNITS
TO LET**

Park Farm Shopping Centre, Allestree, Derby, Derbyshire, DE22 2QN

281-1,321 sq.ft

(26 - 122.7 sq.m)

www.parkfarmshoppingcentre.co.uk

wilko



Card Factory



PARK FARM

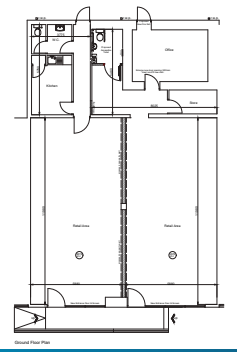
SHOPPING CENTRE ALLESTREE

DESCRIPTION
 Park Farm totals approximately 15,330 sq.m (165,000 sq.ft) of retail space with anchor tenants such as Wilkisons, Co-op, Boots, Costa Coffee, Farmfoods, Savers, plus a local Post Office.

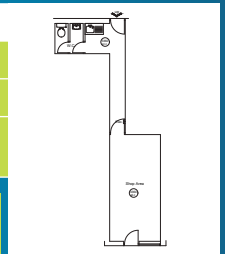
Busy shopping centre with 4 stores and 48 shops

AVAILABILITY AREAS (approx. NIA)

UNIT 14	sq.ft	sq.m
TOTAL	1,321	122.7
RENT	£18,500 per annum	
SERVICE CHARGE	£1,785 per annum	



UNIT 26	sq.ft	sq.m
TOTAL	281	26
RENT	£7,000 per annum	
SERVICE CHARGE	£600 per annum	



View all available units
www.lcproperties.co.uk/parkfarm



300 CAR PARK SPACES

EURO CAR PARK (221 SPACES)

Free customer parking



LOCATION - DE22 2QN

The Park Farm Shopping Centre provides the principle retailing destination for Allestree, a large residential suburb approximately 1 mile north of the City Centre of Derby and is located close to the main University of Derby campus on Kedleston Road.

SERVICE CHARGE & INSURANCE

There is a service charge arrangement in place. The Landlord will insure the premises the premiums to be recovered from the tenant.

SERVICES

All mains services are available.

ENERGY PERFORMANCE

Further information available upon request.

PLANNING

Subject to planning. It is the incoming tenant's responsibility to verify that their intended use is acceptable to the Local Planning Authority.

LEGAL COSTS

Each party is responsible for their own legal costs in connection with the granting of a lease.

*Potential occupiers to make own enquiries to clarify accuracy of data.



Affluent catchment area



Close to Derby University and town centre

VIEWING

Strictly via prior appointment with the appointed agents:

Owned and Managed by

MISREPRESENTATION ACT, 1967 London & Cambridge Properties Limited (Company Number 02895002) the registered office of which is at LCP House, Pensnett Estate, Kingswinford, West Midlands DY6 7NA its subsidiaries (as defined in section 1156 of the Companies Act 2006) associated companies and employees ("we") give notice that: Whilst these particulars are believed to be correct no guarantee or warranty is given, or implied therein, nor do they form any part of a contract. We do our best to ensure all information in this brochure is accurate. If you find any inaccurate information, please let us know and where appropriate, we will correct it. We make no representation that information is accurate and up to date or complete. We accept no liability for any loss or damage caused by inaccurate information. [This brochure gives a large amount of [statistical] information and there will inevitably be errors in it]. Intending purchasers or tenants should not rely on the particulars in this brochure as statements or representations of fact but should satisfy themselves by inspection or otherwise as to the correctness of each of them. We provide this brochure free of charge and on the basis of no liability for the information given. In no event shall we be liable to you for any direct or indirect or consequential loss, loss of profit, revenue or goodwill arising from your use of the information contained herein. All terms implied by law are excluded to the fullest extent permitted by law. No person in our employment has any authority to make or give any representation or warranty whatsoever in relation to the property. SUBJECT TO CONTRACT. We recommend that legal advice is taken on all documentation before entering into a contract. You should be aware that the Code of Practice on Commercial Leases in England and Wales strongly recommends you seek professional advice from a qualified surveyor, solicitor or licensed conveyancer before agreeing or signing a business tenancy agreement. The Code is available through professional institutions and trade associations or through the website: <https://www.rics.org/uk/upholding-professional-standards/sector-standards/real-estate/code-for-leasing-business-premises-1st-edition/>. LCP's privacy notices that apply to its use of your personal information are at www.lcpgroup.co.uk/policies. The privacy notice that applies to you will depend on the nature of your relationship with LCP, and in some cases more than one may apply to you. LCP's privacy policy giving a high level overview of how LCP approaches data protection and your personal information can be found at www.lcpproperties.co.uk/uploads/files/LCP-Privacy-Web-and-Data-Policy-May-2018.pdf.

INNES ENGLAND
MAKE A GREAT DECISION
01332 362244

FHP
www.fhp.co.uk
0121 752 5500

LCP
01384 405631
www.lcpproperties.co.uk

Nick Hosking
M: 01332 362244
E: nhosking@innes-england.com

Doug Tweedie **Darran Severn**
M: 07887 787892 M: 07917 460031
E: doug@fhp.co.uk E: darran@fhp.co.uk

Simon Eatough
M: 07771 764148
E: SEatough@lcpproperties.co.uk