



STRATSTONE

ESTATES



Price On Application



Latimer Drive
Laindon



Mid Terraced



2 Bedrooms



1 Bathroom



Kitchen



Living Room



Dining Area



Garden

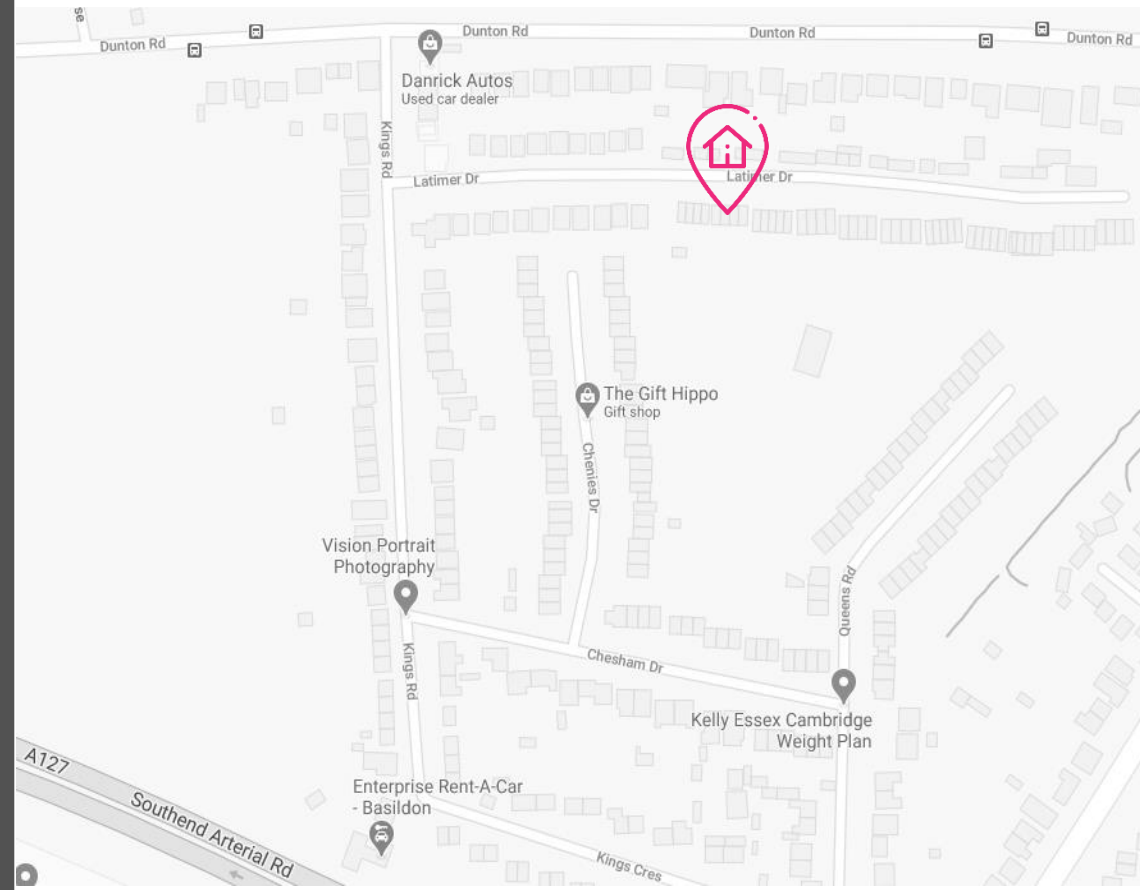


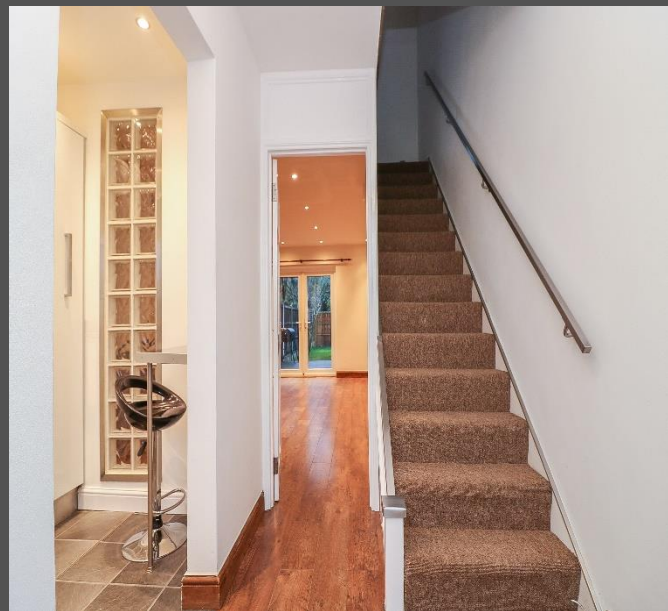
Garage

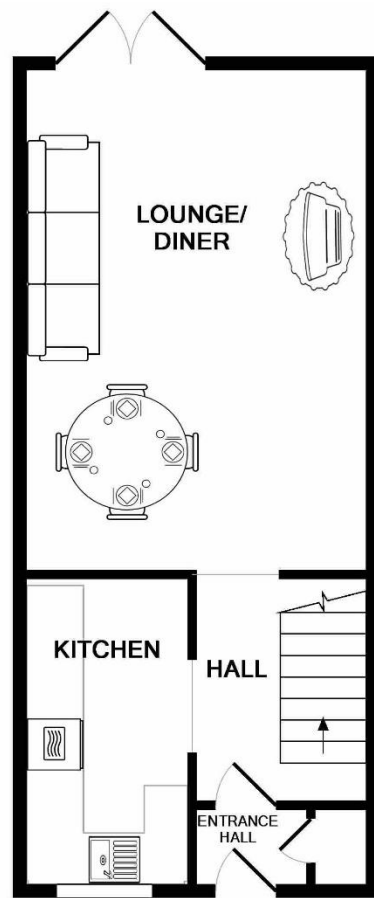


Off Street
Parking

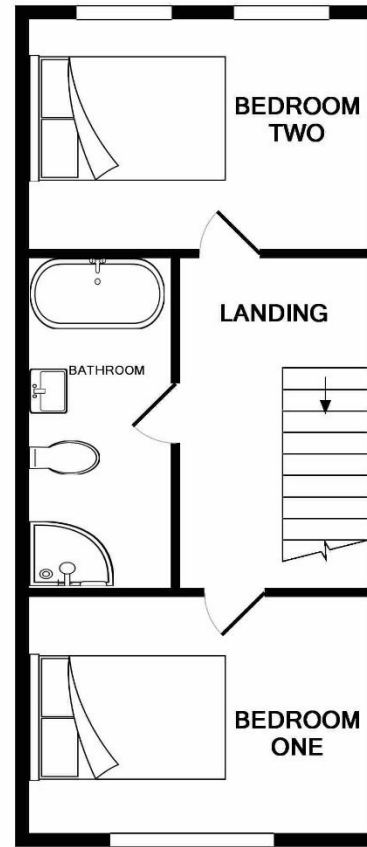
- To be sold with No Onward Chain.
- Situated in a cul-de-sac location within the popular Steeple View area.
- Fitted kitchen and spacious lounge/diner overlooking the garden.
- Two double bedrooms and a modern bathroom on the first floor.
- Off street parking to the front and a single garage in block.







GROUND FLOOR



1ST FLOOR

- Entrance Hall
- Fitted Kitchen: 11'2 x 6'0
- Lounge/Diner: 12'4 x 18'0
- First Floor Landing

- Bedroom One: 12'4 x 8'9
- Bedroom Two: 12'4 x 8'4
- Bathroom: 12'0 x 5'4
- Rear Garden





STRATSTONE

— ESTATES —

Get in touch!

T 01277 598278

E info@stratstoneestates.com

W www.stratstoneestates.com

A 157, High Street, Ongar, Essex, CM5 9JD



Under the Property Misdescription Act regulations, we are obliged to ensure that any information used in the marketing of this property does not misrepresent the position to any material extent.