

# 2 Bedroom Semi Detached SHARED GARDEN

68 HASTOE PARK, AYLESBURY  
BUCKINGHAMSHIRE HP20 2AA



**£300,000**

TEL. 01296 761 331  
EMAIL; HELLO@WESOLDIT.CO.UK



# LOCATION

Welcome to Hastoe Park a sought-after enclave in the heart of Aylesbury. This charming area blends modern convenience with suburban living, offering the perfect balance of lifestyle and location. Hastoe Park boasts landscaped surroundings and a strong sense of community, making it a popular choice for families, professionals, and retirees alike.

## THIS HOME FEATURES

TWO DOUBLE BEDROOMS  
MODERN FITTED  
KITCHEN/DINING AREA  
LIVING ROOM  
SHARED GARDEN  
WALK TO TOWN  
WALK TO STATION  
GARAGE & PARKING SPACE

With nearby Schooling, recreational facilities, and convenient transport links, easy access is provided to both the bustling town centre of Aylesbury and central London.



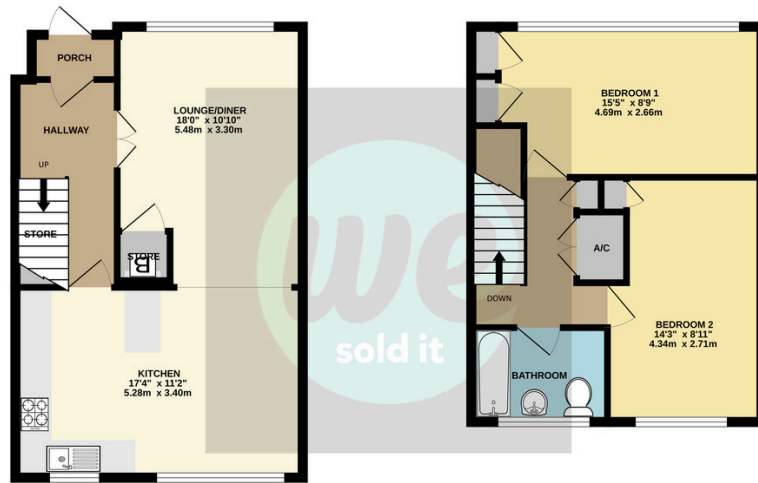
*We Sold It are delighted to present this charming two-bedroom semi-detached property in the well-connected neighbourhood of Hastoe Park, Aylesbury. Perfectly positioned to face a tranquil communal garden shared with just three neighbours, this home offers a blend of open-plan living and community charm.*

*Upon entering, you are welcomed by an inviting entrance hall leading into a spacious kitchen/diner and lounge area. This open-plan design provides an ideal space for both relaxed living and entertaining. Upstairs, you will find two generously sized double bedrooms and a well-appointed family bathroom, ensuring comfort and convenience for all residents.*

*Additional amenities include a garage in a nearby block and an adjacent parking space, providing practical solutions for your parking needs.*

*This delightful property in Hastoe Park combines functional living with a strong sense of community, making it a perfect choice for a variety of potential homeowners. Arrange your viewing with We Sold It today and discover the charm of this exceptional home*





Whilst every attempt has been made to ensure the accuracy of the floorplan contained here, measurements of doors, windows, rooms and any other items are approximate and no responsibility is taken for any error, omission or mis-statement. This plan is for illustrative purposes only and should be used as such by any prospective purchaser. The services, systems and appliances shown have not been tested and no guarantee as to their operability or efficiency can be given.  
Made with Merge 12/2024

Score	Energy rating	Current	Potential
92+	A		
81-91	B		86 B
69-80	C		
55-68	D	66 D	
39-54	E		
21-38	F		
1-20	G		

## VIEWINGS

Strictly by appointment with  
WeSoldIt.co.uk

*MONEY LAUNDERING REGULATIONS 2017* intending purchasers will be asked to produce identification and proof of financial status when an offer is received. We would ask for your prompt co-operation in doing so to limit any delay in agreeing a sale.

*THE CONSUMER PROTECTION REGULATIONS 2008* We the Agent have not tested any apparatus, equipment, fixtures and fittings or services and cannot verify that they are in working order or fit for the purpose. We advise any buyer to obtain verification from their Solicitor or Surveyor.

The Tenure of a Property as referenced is based on information supplied by the Seller. We the Agent have not had sight of the title documents. A Buyer is advised to obtain verification from their Solicitor.

We would advise you check the availability of this property before travelling any distance to view. We have taken every precaution to ensure that these details are accurate and not misleading. If there is any point which is of particular importance to you, please contact us and we will provide any information you require, or professional verification should be sought. We would recommend you do this, particularly if you intend to travel some distance to view the property. The mention of any appliances and services within these details does not imply that they are in full and efficient working order. These particulars are in draft form awaiting Vendors confirmation of their accuracy. These details must therefore be taken as a guide only and complete accuracy cannot be guaranteed. All dimensions are approximate. Floor Plan: For illustrative purposes only, not to scale.



Tel. 01296 761331  
hello@WeSoldIt.co.uk



rightmove  
find your happy