

Bay Court, St. Asaph Avenue North, Kinmel Bay, Conwy, LL18 5EE

£499,995

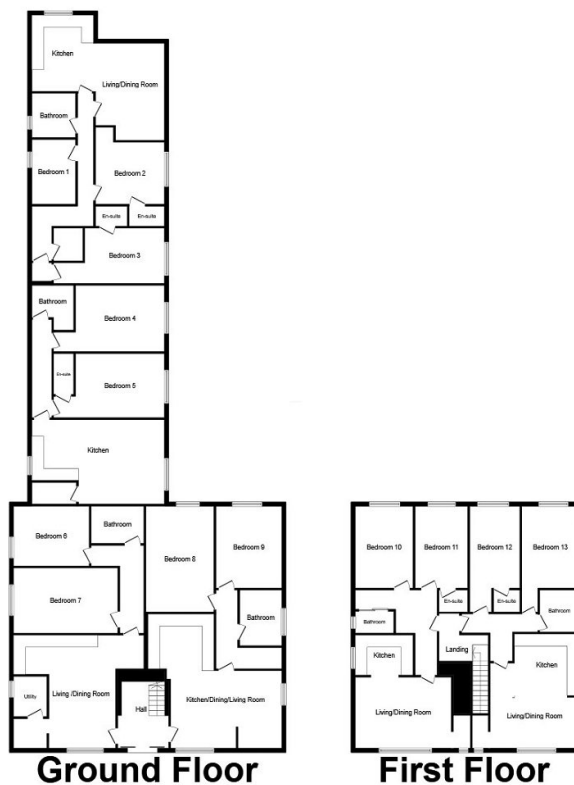
13 5 2



An opportunity to acquire a substantial former Residential home in a prime coastal location. This modern build property has provided specialist dementia care within the community for several years and now has the benefit of planning permission for development to convert to four 2 bedroom apartments and a 2 bedroom and 3 bedroom bungalow. Its position, only a stone's throw from the seafront and the promenade, ticks all the boxes both as a nursing home or for residential dwellings. With ample parking, large gardens and dual access it stands just off the main coastal highway, near to Rhyl harbour and within two miles of the A55 Expressway. A versatile property ripe for visionary change.

Key Features

- Former Residential home
- Planning permission to convert to four 2 bedroom apartments and 2 & 3 bedroom bungalows
- Ample parking
- Modern build
- EPC - D
- Prime location
- Close to the seafront
- Large garden
- Viewing advisable
- 04/12/23



This plan is for illustration purposes only and may not be representative of the property. Plan not to scale. Powered by PropertyBox