

Suite of offices to rent, Wyvern House, Rhyl Road, Rhuddlan

£7,800 P.A

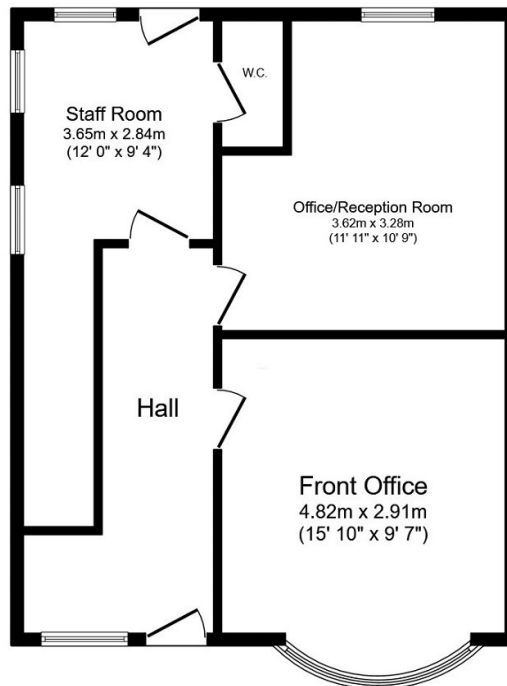
0 1 2



These ground floor offices are located in a prime position on the main high-street in the village of Rhuddlan providing great foot traffic for any growing business. The offices are neat and tidy providing comfortable working surroundings along with a good size staff room with toilet off. With the benefit of two parking spaces they are ready for immediate occupation and are offered on flexible rents of 1 to 3 years.

Key Features

- Ground floor suite office
- Prime high street position
- Comfortable working surroundings
- Immediate occupation
- EPC - E
- Rent £7,800 PA
- Village location
- Two parking spaces
- flexible terms of 1 to 3 years
- Date - 19/10/23



Floor Plan

Total : 50.1 sq.m. (540 sq.ft.) approx
Sizes and dimensions are approximate, actual may vary.