



3 Floors



3 Bedrooms



1 En suite

MCQUEEN THREE BEDROOM HOME

A three bedroom semi-detached family home offering a charming lounge and stunning open plan kitchen / dining area with French doors leading to the rear garden. The master suite occupies the whole of the second floor and benefits from an en suite shower room.

MCQUEEN THREE BEDROOM HOME

⬢ DIMENSIONS

Second Floor:

Bedroom 1

3.21m x 3.46m
10'6" x 11'4"

En Suite

First Floor:

Bedroom 2

4.32m x 2.66m
14'2" x 8'9"

Bedroom 3

2.24m x 3.39m
7'4" x 11'2"

Bathroom

Ground Floor:

Lounge

3.32m x 4.76m
10'11" x 15'7"

Kitchen / Dining

4.32m x 4.80m
14'2" x 15'9"

(S) Storage

(C) Cloaks

(W) Wardrobes

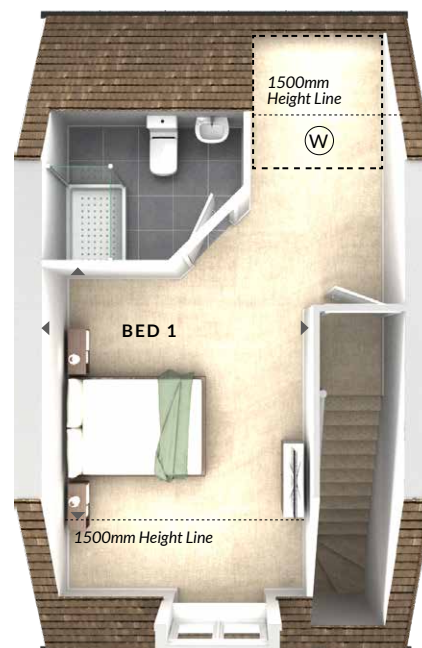
*Wardrobes to bed 1 fitted as optional paid upgrade only. Please speak to Sales Advisor for details.

◀ ▶ Measurement Points

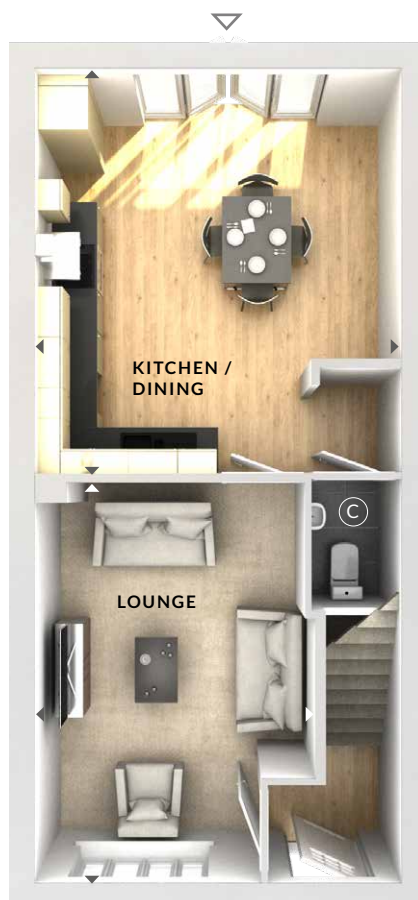
△ External Access



First Floor



Second Floor



Ground Floor

© Bloor Homes
315B 7.1

These particulars are intended as a preliminary guide for prospective purchasers and should not be relied upon. The elevational treatment for individual house types shows a typical arrangement. Details of materials and design treatments may vary. Any artist impressions shown are not intended to represent any particular plot. Purchasers are advised to inspect the layout plan to establish the arrangement of the house and surrounding property. Internal layouts show a general arrangement which may vary from plot to plot. Room sizes given are approx. overall finished room sizes and subject to normal building tolerances (ie ± 75mm). In all instances purchasers are advised to inspect plot specific information available from our sales team. Nothing in these particulars or verbal assurance shall form or constitute part of any contract, and are given without any responsibility on behalf of Bloor Homes.

BLOOR HOMES