



Thetford Road, Northwold

LOCATION
LOCATION™ 

Thetford Road

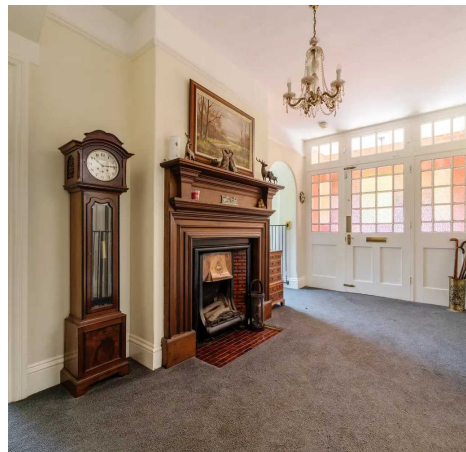
Northwold

Discover a one-of-a-kind early 20th Century gem in Northwold, set on 1.73 acres with stunning field views, a paddock, and stables. This charming home boasts four bedrooms, spacious living areas, and a versatile layout. Perfect for countryside living with modern conveniences. Don't miss out!

Council Tax band: C

Tenure: Freehold

- Delightful period family home with detached double garage
- Established plot extending to 1.73 acres
- Could suit family with horse or two small ponies
- Paddock area, stable and outbuildings with separate gated access
- Rural village setting with rolling countryside views to the rear
- Four bedrooms (three doubles, one generous single)
- Two reception rooms, dining room and substantial conservatory
- Room for further improvement and a price tag to reflect!
- Oil fired central heating via radiators
- Double glazed windows throughout





Thetford Road

Northwold

Nestled in the enchanting village of Northwold, this captivating early 20th-century home is a treasure trove of character, combining the rustic allure of the countryside with the comforts of modern living, with immediate access onto the A134. Situated on a generous 1.73-acre plot, the property boasts breathtaking views of rolling fields, offering a serene retreat from the bustling world.

As you approach through either of the gated entrances, you're welcomed by a striking lawn frontage, ample parking space, a double garage, and a functional workshop, setting the stage for a grand entrance. The land surrounding the home is beautifully divided, with a lush paddock and stables on one side and an enclosed area adorned with a variety of trees on the other - perfect for outdoor leisure in the warmer months.

Inside, the home opens into a spacious hallway, anchored by a stunning feature fireplace. The ground floor layout includes a well-appointed kitchen with potential for an open plan, alongside a separate dining room. The main living room, graced with a front-facing aspect, complements a sizable brick conservatory that offers panoramic views of the garden and fields. Additionally, a versatile second lounge serves as a potential guest bedroom, enhancing the home's flexible living space.

Upstairs, the first-floor landing presents a picturesque outlook across the fields. The accommodation comprises three double bedrooms and a well-proportioned single bedroom, alongside a family bathroom. The master bedroom offers ample space to create an en-suite, adding an extra layer of privacy and luxury.



Thetford Road, Northwold, Thetford, IP26

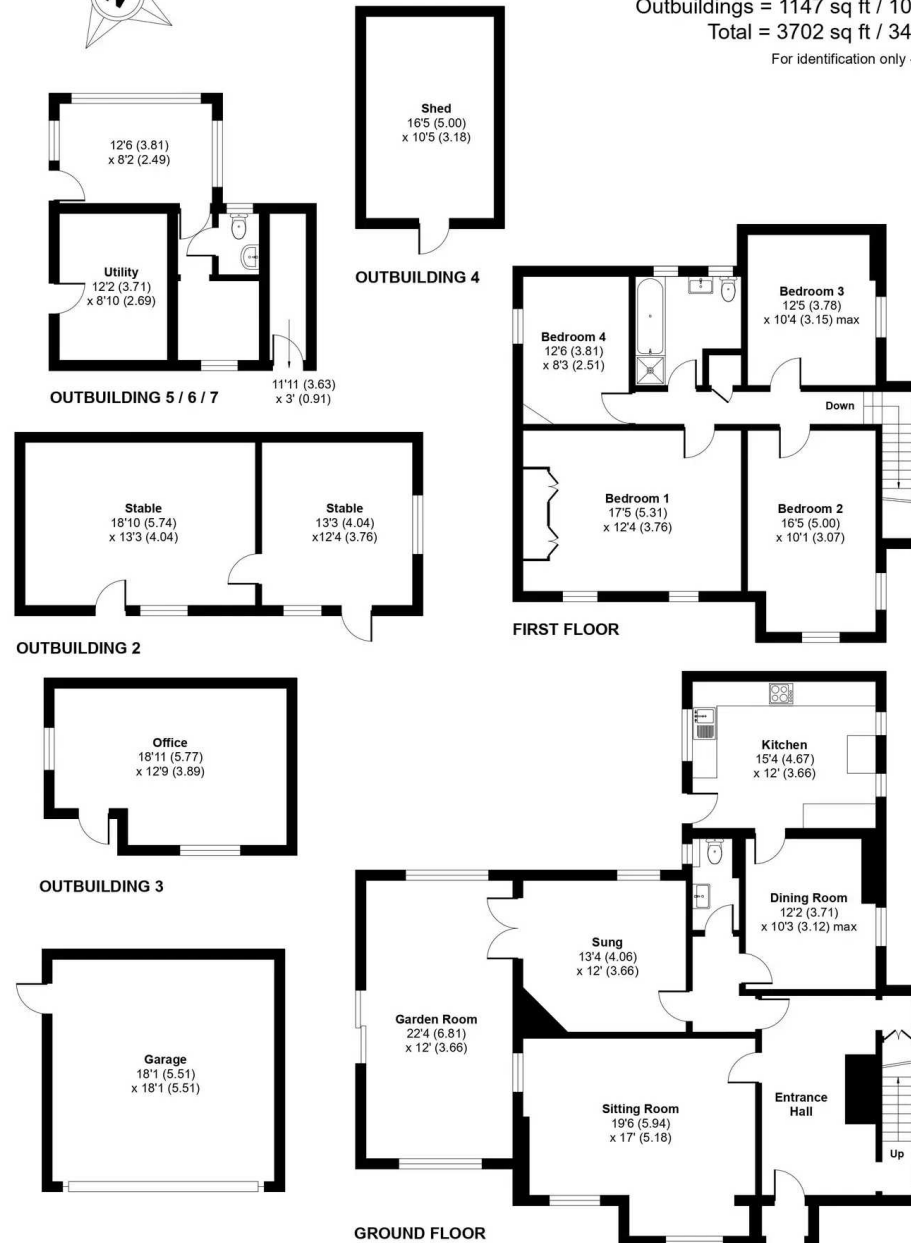
Approximate Area = 2225 sq ft / 206.7 sq m

Garage = 330 sq ft / 30.6 sq m

Outbuildings = 1147 sq ft / 106.5 sq m

Total = 3702 sq ft / 343.9 sq m

For identification only - Not to scale





Suite 2, The Limes, 32 Bridge St, Thetford IP24 3AG
0184 281 8688

thetford@locationlocation.com
www.locationlocation.com

We are required by law to conduct anti-money laundering checks on all those selling or buying a property. Whilst we retain responsibility for ensuring checks are carried out correctly and for ongoing monitoring, the initial checks are carried out on our behalf by Lifetime Legal who will contact you once you have agreed to instruct us in your sale or had an offer accepted on a property you wish to buy. The cost of these checks is £60 inc VAT, which covers the cost of obtaining relevant data and any manual checks and monitoring which might be required. This fee is paid in advance, directly to Lifetime Legal and is non-refundable.

In accordance with The Consumer Protection from Unfair Trading Regulations 2008 all property particulars, photographs and floor plans are for guidance only. They do not constitute a contract or part of a contract. Lease details, service charges and ground rent (where applicable) and council tax are given as a guide only and should be checked and confirmed by your Solicitor prior to exchange of contracts. We have not carried out a structural survey and the services, appliances and specific fittings have not been tested. All photographs, measurements, floor plans and distances referred to are given as a guide only and should not be relied upon for the purchase of carpets or any other fixtures or fittings. The copyright of all details, photographs and floor plans remain exclusive to Location Location.