



St. Johns Way, Thetford

LOCATION
LOCATION™ 

St. Johns Way

Thetford

Find your haven in this super Redcastle Furze home overlooking a green! It features a modern kitchen, bright lounge, en-suite master bedroom, and a sunny garden. Chain-free and perfect for families and first-time buyers. Discover your dream home today!

Nestled in a pleasant pedestrianised setting and overlooking a green, this delightful three-bedroom property is perfect for those seeking a blend of comfort and convenience. Offered for sale on a chain-free basis, this home boasts smooth skim ceilings with LED downlights and a neutral colour palette throughout, creating a modern and inviting atmosphere.

- Pleasant pedestrianised setting
- Overlooking a green to the front
- En suite shower room to the principal bedroom
- Offered for sale on a 'chain free' basis
- Private and enclosed south east facing rear garden
- Smooth skim ceilings throughout with LED downlights
- Modern kitchen with integrated oven and dishwasher
- Neutral colour tones throughout
- Three bedrooms (two doubles and single with built in wardrobe)
- Modern white three piece bathroom suite





277 St. Johns Way

Thetford, Thetford

Step inside through a high-security composite entrance door into a spacious hallway, beautifully lit by a side window. The hallway features handy storage space beneath the stairs, perfect for keeping things tidy. To the left, you'll find a generously sized dual aspect lounge with a double glazed window at the front and full-width sliding patio doors at the back, effortlessly blending indoor and outdoor living during the summer months.

The modern white cottage-style kitchen is a chef's delight, with extensive base and wall units providing ample storage and work surface space. It includes an integrated slimline dishwasher, built-in electric double oven, a 4-ring gas hob with an extractor hood, and plumbing for additional under-counter appliances. Enjoy cooking with a view of your private, enclosed south-east facing garden. The dining area comfortably seats six, making it perfect for family meals or entertaining guests. An entrance door to the rear garden and a cupboard housing the gas combination boiler complete this functional and stylish space.

Upstairs, the principal bedroom is a true retreat. Unusually for homes on the Redcastle Furze development, it features an en-suite shower room with a modern white suite, including a WC, pedestal basin, and a shower cubicle with a rainwater head and separate mixer riser. Say goodbye to morning bathroom queues!

The second bedroom is a spacious dual aspect double room, offering plenty of space for flexible furniture arrangements. The third bedroom, located at the front, is a decent-sized single room with a built-in wardrobe over the stairs.

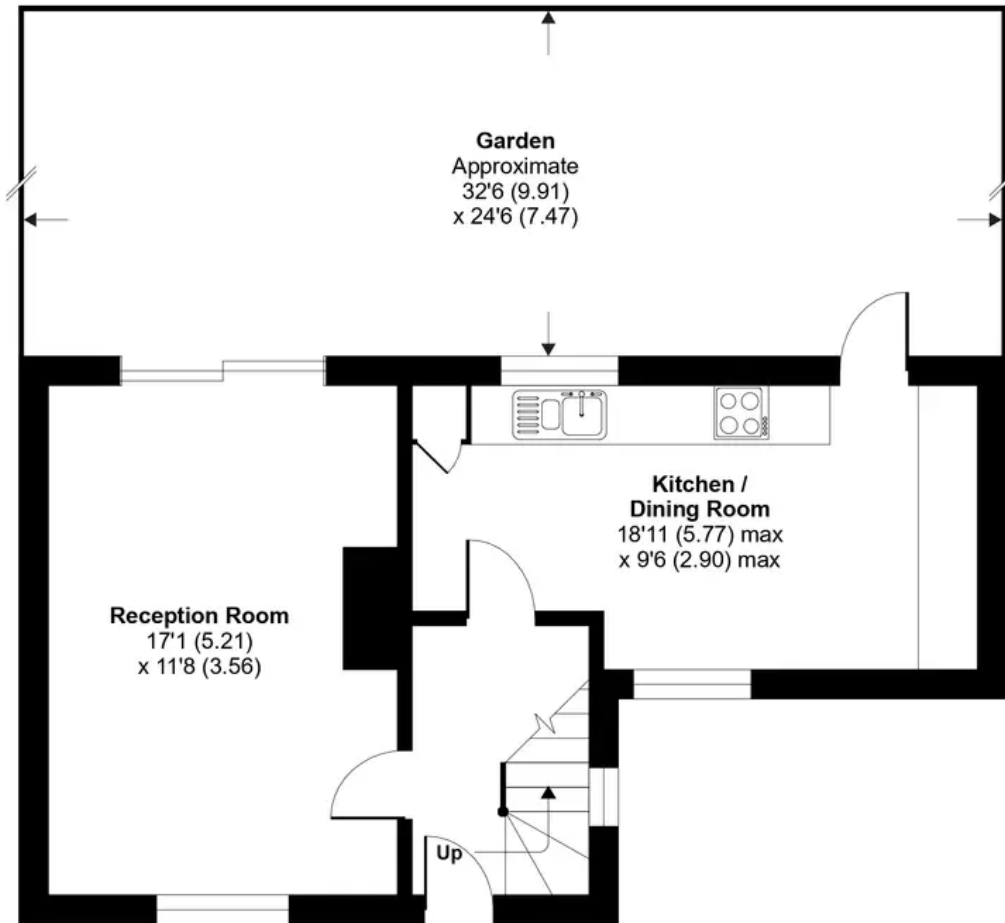
The family bathroom is modern and sleek, featuring a white three-piece suite with a vanity sink unit, panel bath, WC, and modern white tiling, all complemented by a heated towel rail.



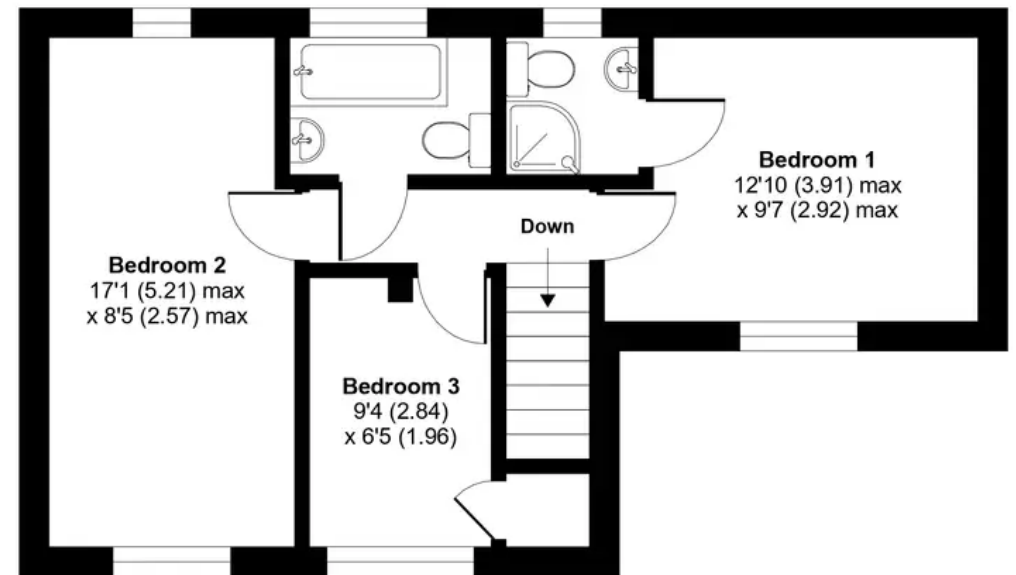
St. Johns Way, Thetford, IP24

Approximate Area = 890 sq ft / 82.7 sq m

For identification only - Not to scale



GROUND FLOOR



FIRST FLOOR



Floor plan produced in accordance with RICS Property Measurement Standards incorporating International Property Measurement Standards (IPMS2 Residential). © nichecom 2024. Produced for Location Location. REF: 1152166

Front Garden

Rear Garden

Outside, the south-east facing rear garden is perfect for relaxing and entertaining, with a patio area and lawn enclosed by wooden fencing and a retaining wall.

24' 6" x 32' 6" (7.47m x 9.91m)

The property also benefits from double glazed windows throughout, a modern electric consumer unit certified through to 2026, and a combination boiler.

This charming home is ideal for families or anyone looking for a move-in ready property at an affordable price point!





Suite 2, The Limes, 32 Bridge St, Thetford IP24 3AG
0184 281 8688

thetford@locationlocation.com
www.locationlocation.com

We are required by law to conduct anti-money laundering checks on all those selling or buying a property. Whilst we retain responsibility for ensuring checks are carried out correctly and for ongoing monitoring, the initial checks are carried out on our behalf by Lifetime Legal who will contact you once you have agreed to instruct us in your sale or had an offer accepted on a property you wish to buy. The cost of these checks is £60 inc VAT, which covers the cost of obtaining relevant data and any manual checks and monitoring which might be required. This fee is paid in advance, directly to Lifetime Legal and is non-refundable.

In accordance with The Consumer Protection from Unfair Trading Regulations 2008 all property particulars, photographs and floor plans are for guidance only. They do not constitute a contract or part of a contract. Lease details, service charges and ground rent (where applicable) and council tax are given as a guide only and should be checked and confirmed by your Solicitor prior to exchange of contracts. We have not carried out a structural survey and the services, appliances and specific fittings have not been tested. All photographs, measurements, floor plans and distances referred to are given as a guide only and should not be relied upon for the purchase of carpets or any other fixtures or fittings. The copyright of all details, photographs and floor plans remain exclusive to Location Location.