



Campion Road, Thetford

LOCATION
LOCATION™ 

Campion Road

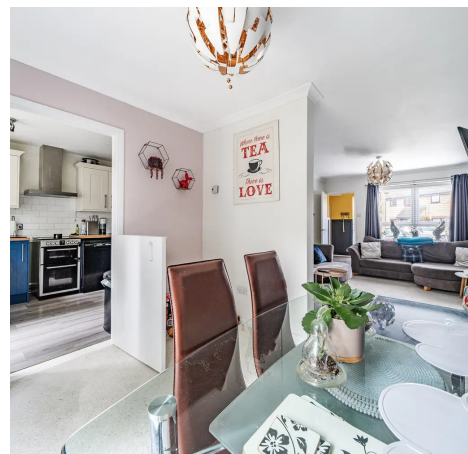
Thetford

Discover your dream home in Cloverfields! This stylish 3 bedroom gem features a modern kitchen, open plan living, and impressive bedroom spaces. Enjoy the benefits of the garage conversion for extra utility, workspace and a WC downstairs! Just steps from serene river and water meadow walks.

Council Tax band: C

Tenure: Freehold

- Garage conversion providing WC, utility room and work from home space
- Popular Cloverfields development offering good access to town
- Near to river and water meadow walks - feed the muntjac from your doorstep
- Open plan living / dining area
- Impressive principal bedroom with two further double bedrooms
- White three piece bathroom suite
- Driveway parking for one vehicle
- Enclosed rear garden with patio and garden shed
- Double glazing and gas central heating via radiators





Campion Road

Thetford

Upon entering through the porch, you are greeted by a warm and inviting lounge, with a convenient WC to the right. The living area seamlessly transitions into an open plan space, perfect for working from home and dining. The dining area comfortably accommodates six and features sliding doors that lead to the private and enclosed rear garden, making it ideal for both indoor and outdoor entertaining.

The kitchen stands out with its striking contrasting blue and white base and wall units, complemented by a subway tiled splashback. It offers ample space for appliances and a further door that leads directly to the rear garden. The utility room, part of the thoughtful garage conversion, provides additional space and plumbing for a washing machine and tumble dryer.

Upstairs, you will find an impressively sized principal bedroom with enough space for a king-size bed and additional bedroom furniture. There are two further bedrooms, both capable of accommodating double beds, making this home perfect for families. The first floor is completed by a modern, white three-piece bathroom suite.

The home benefits from double glazing and gas central heating via radiators, ensuring comfort throughout the year. The bold color choices throughout the property are beautifully complemented by softer, neutral tones, adding to the home's charm and appeal.

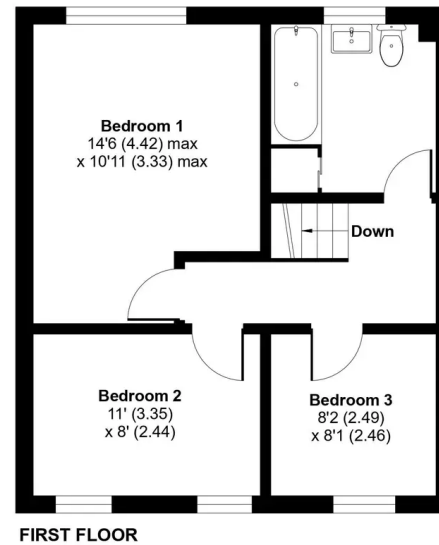
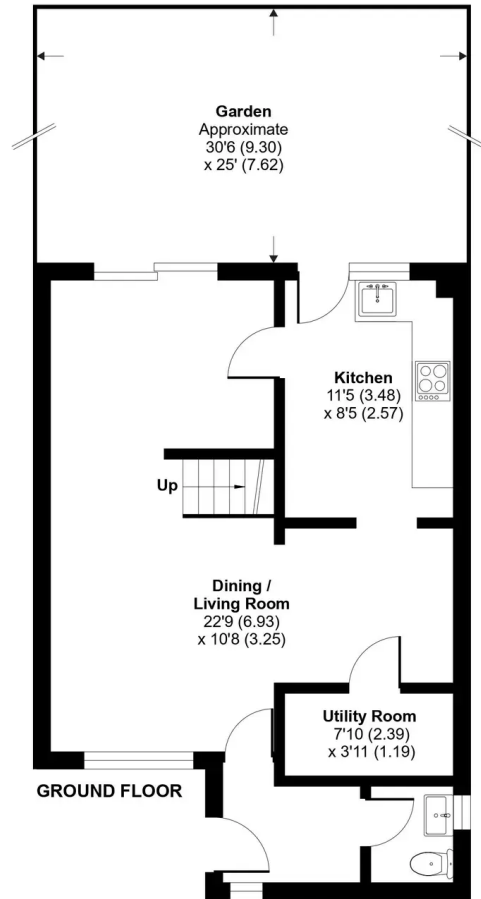
This practical and stylish home is ready for its new owners to move in and enjoy all that it has to offer. Contact us today to arrange a viewing and see for yourself the potential of this wonderful property.



Campion Road, Thetford, IP24

Approximate Area = 961 sq ft / 89.2 sq m

For identification only - Not to scale



Front Garden

Externally, the property features a lawned front garden and driveway parking for one vehicle.

Rear Garden

The rear garden is private and enclosed, offering a lawn, patio area, garden shed, and flower beds to the borders, creating a serene outdoor space for relaxation and play.

30' 6" x 25' 0" (9.3m x 7.62m)

Driveway

1 Parking Spaces





Suite 2, The Limes, 32 Bridge St, Thetford IP24 3AG
0184 281 8688

thetford@locationlocation.com
www.locationlocation.com

We are required by law to conduct anti-money laundering checks on all those selling or buying a property. Whilst we retain responsibility for ensuring checks are carried out correctly and for ongoing monitoring, the initial checks are carried out on our behalf by Lifetime Legal who will contact you once you have agreed to instruct us in your sale or had an offer accepted on a property you wish to buy. The cost of these checks is £60 inc VAT, which covers the cost of obtaining relevant data and any manual checks and monitoring which might be required. This fee is paid in advance, directly to Lifetime Legal and is non-refundable.

In accordance with The Consumer Protection from Unfair Trading Regulations 2008 all property particulars, photographs and floor plans are for guidance only. They do not constitute a contract or part of a contract. Lease details, service charges and ground rent (where applicable) and council tax are given as a guide only and should be checked and confirmed by your Solicitor prior to exchange of contracts. We have not carried out a structural survey and the services, appliances and specific fittings have not been tested. All photographs, measurements, floor plans and distances referred to are given as a guide only and should not be relied upon for the purchase of carpets or any other fixtures or fittings. The copyright of all details, photographs and floor plans remain exclusive to Location Location.