



Tithing Close, Thetford

LOCATION
LOCATION™ 

Tithing Close

Thetford

Welcome to the 'Tardis'! This centrally located home has been thoughtfully extended to cater for the demands of modern day living - cleverly making use of the space available to create the perfect starter home or investment purchase.

Council Tax band: A

Tenure: Freehold

- Town centre position - perfect for amenity access!
- Open plan kitchen / living / dining area
- Impressive principal bedroom suite with en suite dressing room
- Neutrally decorated throughout
- Fully enclosed low maintenance garden
- Versatile accommodation suiting all buyer types
- High gloss kitchen with butcher block work surfaces
- Three bedrooms and ground floor bathroom
- Electric heating (no gas available in Tithing Close)
- Double glazed windows & composite entrance door





Tithing Close

Thetford

Whether you want to walk to the gym, the railway station or your favourite coffee shop - we've got you covered with this town centre chalet.

A composite entrance door leads into the functional open plan kitchen / living / dining area, which has been opened up to create a sociable family space and has new consumer unit installed in 2015.

There is a comfortable lounge area with space for dining room table and chairs, which in turn leads into a well fitted kitchen with cream gloss units with butcher block work surfaces, brushed chrome fittings and a circular bowl sink unit. There's an electric oven and hob as well as enough space for an American style fridge/freezer, plumbing for washing machine and a dishwasher. There's even room for a tumble dryer neatly positioned under the stairs.

The bathroom is a modern white suite with WC, wash basin and bath with mixer riser.

Also located on the ground floor is a principal bedroom with vaulted ceiling and a further extension on the side, which acts as the en suite dressing room - although, depending on your living requirements, this could make an ideal family / play space and work-from-home office too!

On the first floor are two further bedrooms, of generous size, located either side of the landing which houses the airing cupboard too.

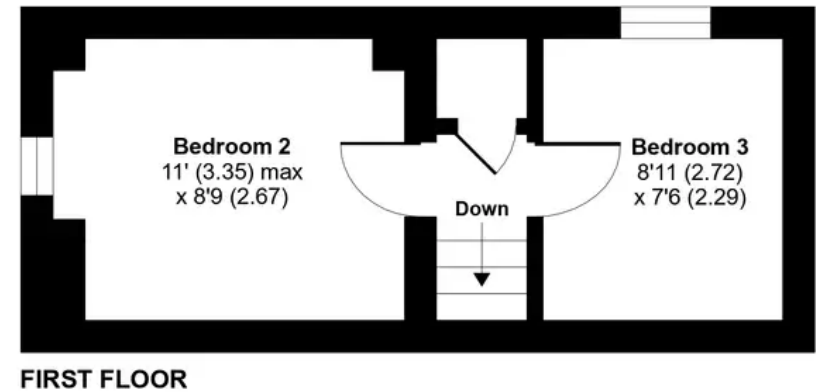
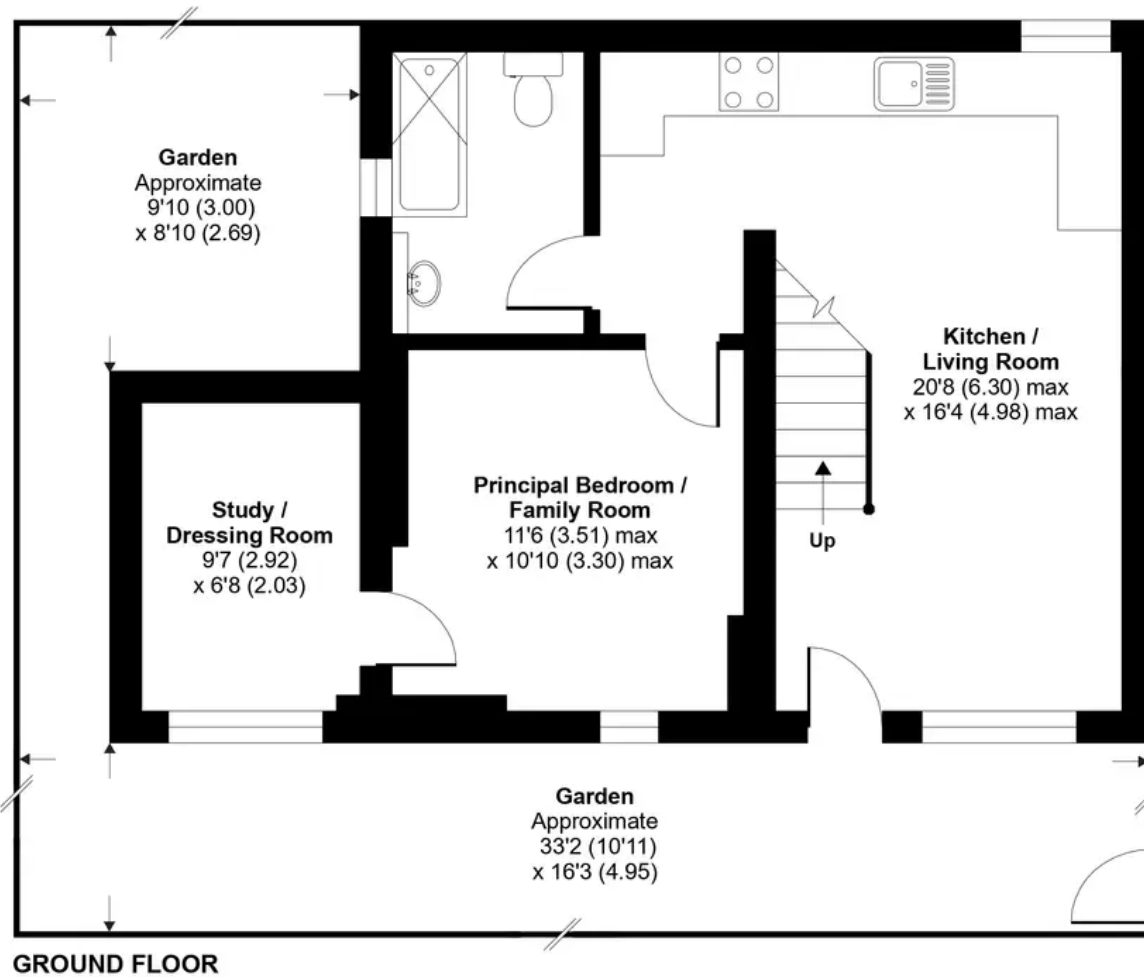
The property has electric heating (there's no mains gas available to Tithing Close), parking and double glazed windows.



Tithing Close, Thetford, IP24

Approximate Area = 748 sq ft / 70 sq m

For identification only - Not to scale



Garden

The garden is very private and fully enclosed by wooden fencing with durable concrete posts and gravel boards, and a raised seating area.

16' 3" x 33' 2" (4.95m x 10.11m)





Suite 2, The Limes, 32 Bridge St, Thetford IP24 3AG
0184 281 8688

thetford@locationlocation.com
www.locationlocation.com

We are required by law to conduct anti-money laundering checks on all those selling or buying a property. Whilst we retain responsibility for ensuring checks are carried out correctly and for ongoing monitoring, the initial checks are carried out on our behalf by Lifetime Legal who will contact you once you have agreed to instruct us in your sale or had an offer accepted on a property you wish to buy. The cost of these checks is £60 inc VAT, which covers the cost of obtaining relevant data and any manual checks and monitoring which might be required. This fee is paid in advance, directly to Lifetime Legal and is non-refundable.

In accordance with The Consumer Protection from Unfair Trading Regulations 2008 all property particulars, photographs and floor plans are for guidance only. They do not constitute a contract or part of a contract. Lease details, service charges and ground rent (where applicable) and council tax are given as a guide only and should be checked and confirmed by your Solicitor prior to exchange of contracts. We have not carried out a structural survey and the services, appliances and specific fittings have not been tested. All photographs, measurements, floor plans and distances referred to are given as a guide only and should not be relied upon for the purchase of carpets or any other fixtures or fittings. The copyright of all details, photographs and floor plans remain exclusive to Location Location.