



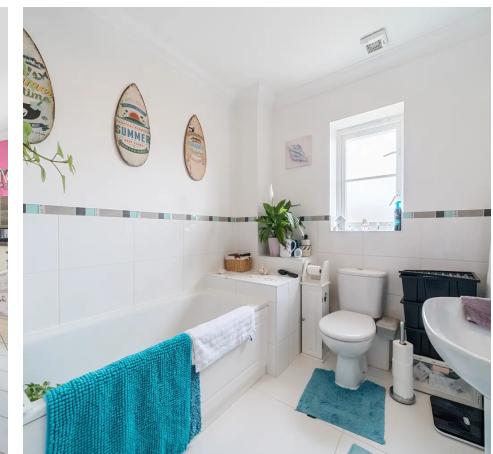
Crecy Mews, Thetford

Crecy Mews

Thetford

Welcome to this beautiful Hopkins Homes development, where every corner exudes comfort and tranquillity. This charming townhouse with four bedrooms spans over 1450 sq. ft. and offers an integral garage and a welcoming driveway, inviting you to indulge in the art of serene living.

- Popular St Andrew's Place development
- Modern 'Regency style' townhouse
- Overlooking a green to the front
- Short stroll to river, woodland and water meadow walks
- Four bedrooms, two receptions
- En suite, family bathroom, ground floor shower room
- Open plan kitchen/diner
- Low maintenance rear garden
- Integral garage and driveway parking
- Gas central heating via radiators





Crecy Mews

Thetford

As you venture further into the house, you will discover the heart of the home on the first floor. This floor is where warmth and hospitality await, making it the perfect place for relaxation and comfort. The lounge is bathed in soft sunlight that dances through its dual-aspect windows. It is a perfect place for gatherings with loved ones or for quiet moments of solitude with a good book. Adjacent to the lounge is the kitchen/diner, which awaits you with its heartwarming ambience and modern amenities for delightful culinary adventures and cherished family meals. Also on this floor, there is a hidden gem, a charming study, where you can work or read in peace.

As you ascend to the highest floor of the house, there are three beautiful bedrooms on this floor, each offering a comfortable and calming haven. The main bedroom, which is a true escape from the outside world, invites you to unwind and recharge, plus the added benefit of a fitted air conditioning unit. It also comes with an en-suite bathroom that is perfect for indulging in self-care. Every moment spent in this space is a celebration of luxury and comfort.

This townhouse is situated amidst captivating views of lush woodlands, making it much more than just a dwelling. The charming appearance, well-thought design, and serene surroundings provide a life of happiness, and beauty, in the beloved Hopkins Homes development.

As you step into the house through the front door, you'll be greeted by a spacious entrance hall that gives you a glimpse of what's to come. The ground floor has a beautiful design, featuring a flexible bedroom with ample sunlight streaming in from the patio doors. The room provides a peaceful retreat for guests or a comfortable workspace. Just a few steps away you'll find a modern bathroom that invites you to relax and recharge.

Council Tax band: C

Tenure: Freehold



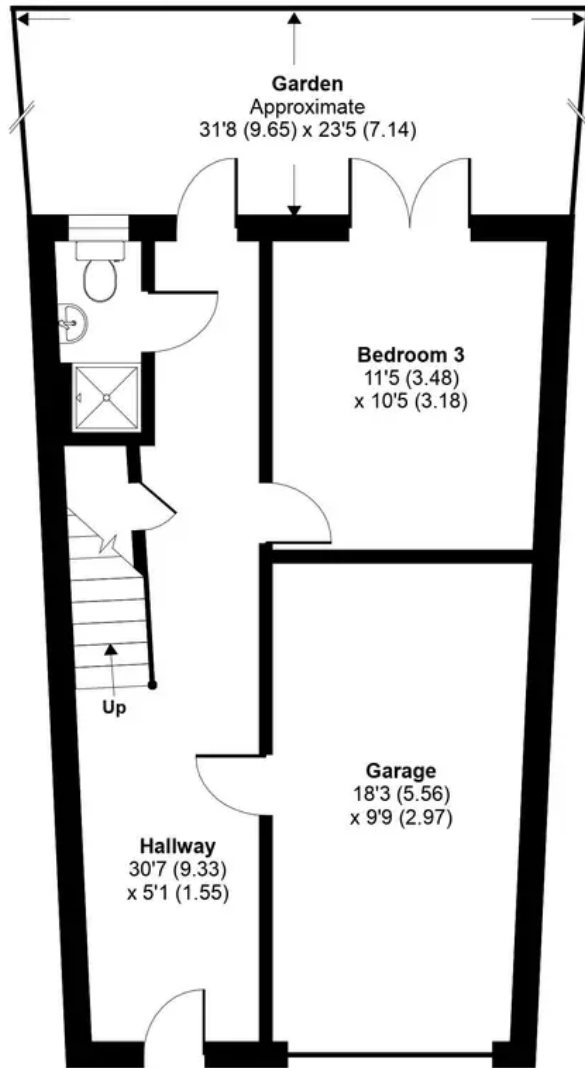
Crecy Mews, IP24

Approximate Area = 1413 sq ft / 131.3 sq m

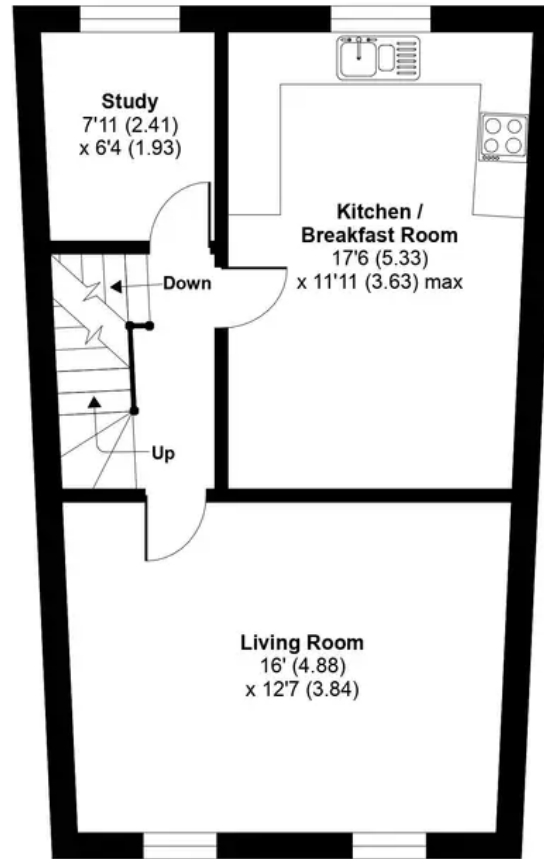
Garage = 174 sq ft / 16.2 sq m

Total = 1587 sq ft / 147.4 sq m

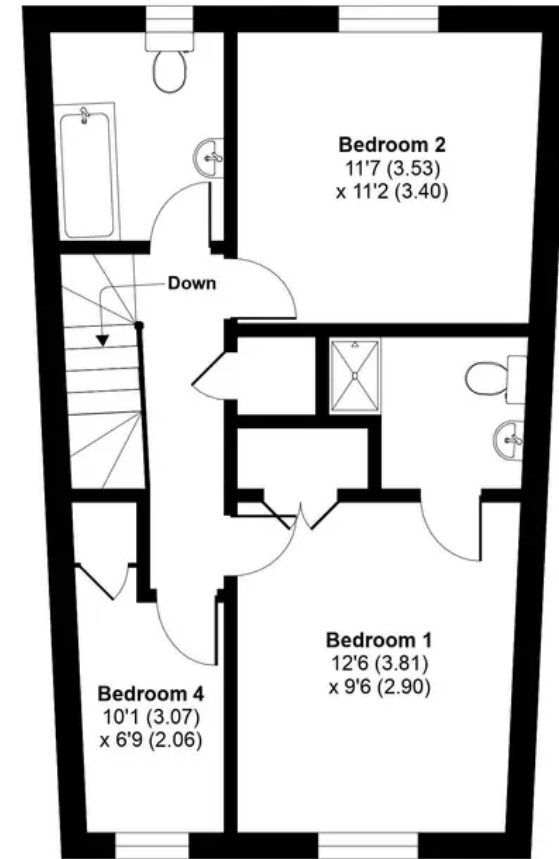
For identification only - Not to scale



GROUND FLOOR



FIRST FLOOR



SECOND FLOOR



Front Garden

Rear Garden

In the enchanting South-East facing rear garden, where every moment spent here is a celebration of nature's beauty, inviting you to enjoy the tranquillity of outdoor living, entertaining guests, or simply relaxing with a cup of tea while listening to the symphony of birdsong.

Additionally, you are conveniently located near river walks and water meadows.

31' 8" x 23' 5" (9.65m x 7.14m)

DRIVEWAY

1 Parking Space

GARAGE

Single Garage





Suite 2, The Limes, 32 Bridge St, Thetford IP24 3AG
0184 281 8688

thetford@locationlocation.com
www.locationlocation.com

We are required by law to conduct anti-money laundering checks on all those selling or buying a property. Whilst we retain responsibility for ensuring checks are carried out correctly and for ongoing monitoring, the initial checks are carried out on our behalf by Lifetime Legal who will contact you once you have agreed to instruct us in your sale or had an offer accepted on a property you wish to buy. The cost of these checks is £60 inc VAT, which covers the cost of obtaining relevant data and any manual checks and monitoring which might be required. This fee is paid in advance, directly to Lifetime Legal and is non-refundable.

In accordance with The Consumer Protection from Unfair Trading Regulations 2008 all property particulars, photographs and floor plans are for guidance only. They do not constitute a contract or part of a contract. Lease details, service charges and ground rent (where applicable) and council tax are given as a guide only and should be checked and confirmed by your Solicitor prior to exchange of contracts. We have not carried out a structural survey and the services, appliances and specific fittings have not been tested. All photographs, measurements, floor plans and distances referred to are given as a guide only and should not be relied upon for the purchase of carpets or any other fixtures or fittings. The copyright of all details, photographs and floor plans remain exclusive to Location Location.