



Cypress Close | Shoreham by Sea | BN43 6AE

Guide Price £600,000





We are delighted to offer for sale this detached chalet style bungalow which is set within this highly sought after location.



Property details: Cypress Close | Shoreham by Sea | BN43 6AE



# Key Features

- Detached Chalet Style Bungalow
- Three / Four Bedrooms
- South Aspect Lounge
- Separate Dining Room
- Conservatory / Sun Room
- Modern Fitted Kitchen
- Very Well Presented Throughout
- Off Road Parking and Garage
- Highly Sought After Location
- No Ongoing Chain



4 Bedrooms



1 Bathroom



2 Reception Rooms

## INTERNAL

ENTRANCE HALL Comprising L-Shaped, pvcu doubled glazed door to the side, ceiling coving, dado rail, wall mounted radiators, airing cupboard housing combination boiler, storage cupboard, wall mounted heating thermostat, doors to lounge, kitchen, bedroom one, bathroom and dining room.

LOUNGE Comprising double glazed south facing windows with fitted wooden shutters, ceiling coving, wall mounted radiators, gas coal effect fireplace with wooden surround and hearth.

KITCHEN Comprising a range of eye level units with down lighting and base level units with granite worktops over and granite splash back, inset one and a half bowl single drainer sink with chrome mixer tap, integrated fridge, integrated freezer, space and plumbing for washing machine, built in waist height oven with built in microwave over, inset ceramic hob with part glass extractor hood over, recess lighting, chrome towel radiator, double glazed windows to the side and part double glazed UPVC door to the side.

BATHROOM Comprising low flush wc, contemporary hand wash basin with vanity unit below, walk-in shower cubicle with integrated shower and fully tiled walls.

BEDROOM ONE Comprising doubled glazed windows to the rear overlooking garden with fitted wooden shutters, fitted wardrobes and drawers, wall mounted radiator.

DINING ROOM Comprising doubled glazed sliding doors to rear leading to rear garden, ceiling coving, wall mounted radiator, stairs to first floor, double glazed French doors to conservatory/ sun room.

CONSERVATORY / SUN ROOM Comprising double glazed windows throughout, ceiling fan, French doors to the rear leading to rear garden.

BEDROOM THREE Comprising double glazed windows to the side, ceiling coving, wall mounted radiator, fitted cupboard and storage in eaves.

BEDROOM TWO Comprising double glazed windows to the side, ceiling coving, wall mounted radiator, door to en-suite cloakroom.

ENSUITE CLOAKROOM Comprising close-coupled w.c, wall mounted wash hand basin with chrome mixer tap, obscure double glazed window to the side.

BEDROOM FOUR / NURSERY Comprising double glazed windows to the side, ceiling coving, fitted wardrobes, storage in eaves, varnished wooden flooring, wall mounted radiator.

## EXTERNAL

REAR GARDEN North/west aspect. Comprising block paved path stepping up onto large lawned area leading to porcelain tiled area and a further small patio area with various shrub, tree and plant boarders.

FRONT GARDEN Comprising large block paved area affording off-road parking for approximately several vehicles, leading onto laid chip stone.

GARAGE Benefitting from power and lighting.

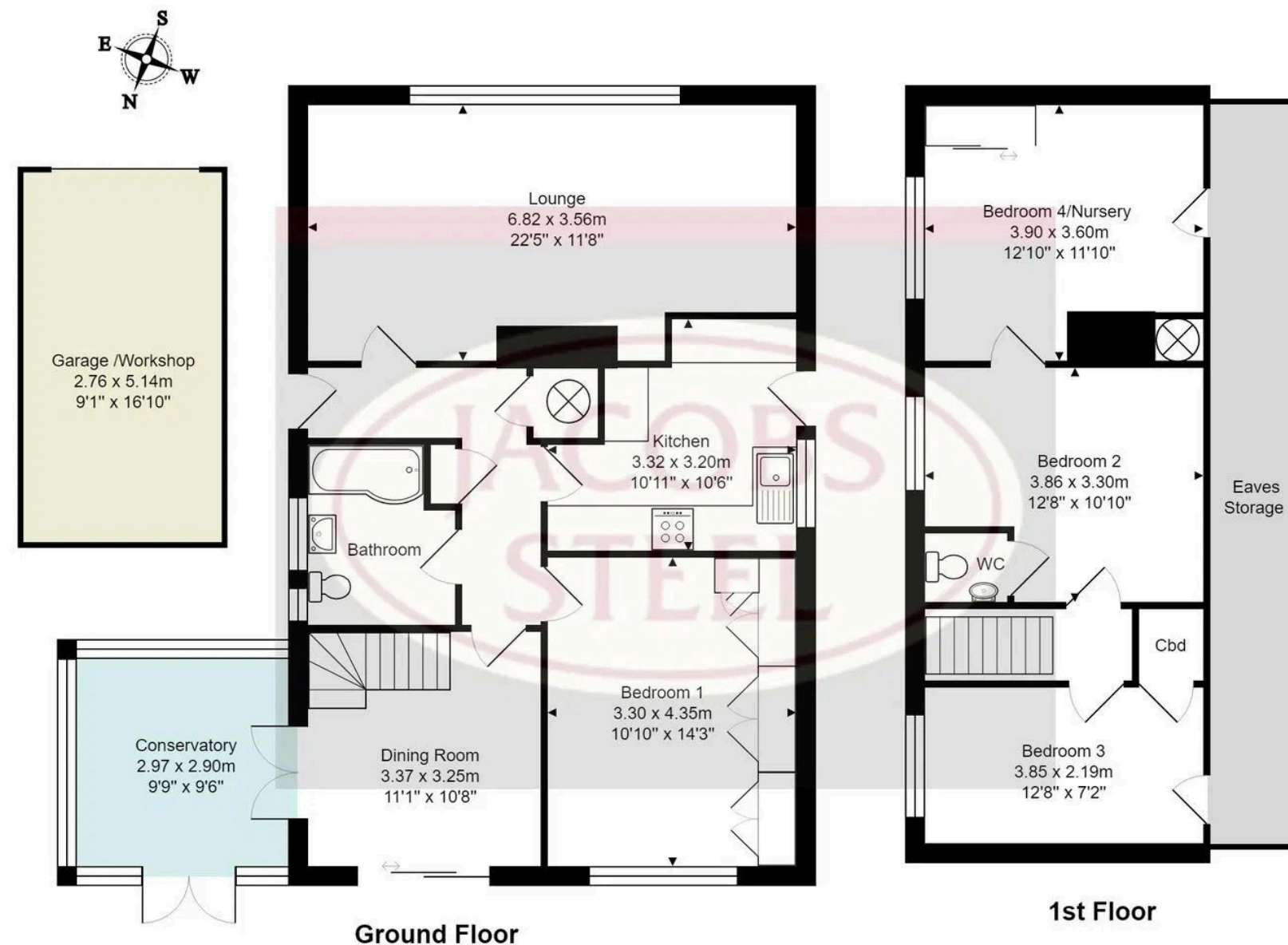
## LOCATION

Conveniently situated within a minute or two drive of Shoreham mainline railway station and the Town Centre with its comprehensive shopping facilities, health centre and library which are all just a short walk away. There is a footbridge at the end of East Street over the River Adur to Shoreham Beach, and pleasant walks and rides nearby over the South Down or up the Adur Valley.



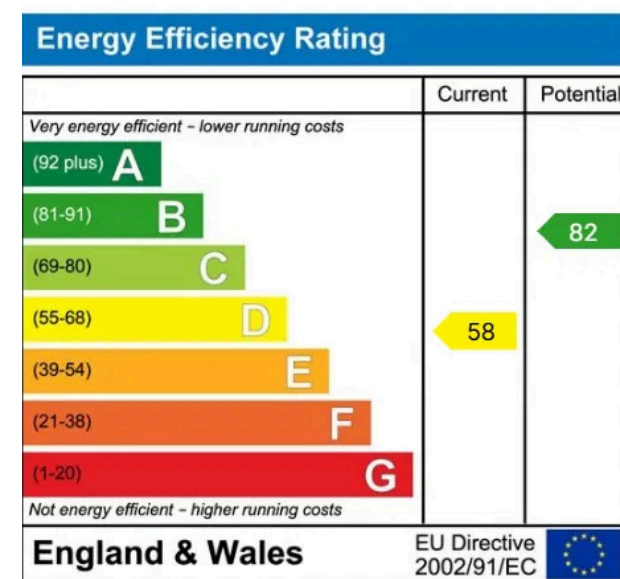
To book a viewing contact us on: 01273 441341 | [shoreham@jacobs-steel.co.uk](mailto:shoreham@jacobs-steel.co.uk) | [jacobs-steel.co.uk](http://jacobs-steel.co.uk)





Total Area: 123.7 m<sup>2</sup> ... 1331 ft<sup>2</sup> (excluding garage, eaves storage)

All measurements are approximate and for display purposes only. Copyright 'GREEN PROPERTIES' 2018



## Property Details:

Floor area (as quoted by EPC: 1216sqft

Tenure: Freehold

Council tax band: E

Whilst we endeavour to make our property particulars accurate and reliable, we have not carried out a detailed survey. If there is any point which is of particular importance to you, please contact the office and we will be pleased to check the information for you, particularly if you are contemplating travelling some distance. Whilst every effort has been made to ensure that any floorplans are correct and drawn as accurately as possible, they are to be used for layout and identification purposes only and are not drawn to scale. The services, where applicable, including electrical equipment and other appliances have not been tested and no warranty can be given that they are in working order, even where described in these particulars. Carpets, curtains, furnishings, gas fires, electrical goods/fittings or other fixtures, unless expressly mentioned, are not necessarily included with the property.