

16 Verner House

Hove BN3 2WB

Asking Price Of £425,000
Share of Freehold

- SPACIOUS FIRST FLOOR FLAT
- THREE DOUBLE BEDROOMS
- SOUTH FACING BALCONY
- GOOD SIZE THROUGHOUT

- DESIRABLE LOCATION
- CLOSE TO ALL AMENITIES
- SHARE OF FREEHOLD
- NO ONWARD CHAIN

Whitlock & Heaps are delighted to present to market this three double bedroom flat forming part of the first floor of this period building. Benefitting from a south facing living room with balcony and being of a great size throughout. This property is brought to market with a share in the freehold and no onward chain.

Situated on this sought-after road, bus routes operate locally making public transport throughout the city simple. Being a stone's throw from the beach and Hove Lawns, the property is ideally located for families. Being within the catchment area for numerous local 'OUTSTANDING' schools and within close proximity to George Street and Church Road with their vast array of shopping facilities, eateries and cafés.

ENTRANCE HALL Intercom, thermostat, storage cupboards, radiator.

LIVING ROOM UPVC double glazed windows with southerly aspect, double doors onto balcony, radiator.

KITCHEN Stainless steel bowl sink with mixer taps and drainer with tiled splash back. Vinyl work surfaces with cupboards below and matching eye level cupboards. Four ring gas hob with oven below and extractor above. Space for dish washer, washing machine and fridge freezer, sash window to front.

BEDROOM UPVC double glazed windows with southerly aspect, cupboard housing 'Ideal' combination gas fired boiler, radiator, door to:

ENSUITE Step in shower cubicle with 'Triton' shower, pedestal wash hand basin, UPVC double glazed frosted windows, low level w.c, extractor, radiator.

BEDROOM Sash window, radiator.

BEDROOM Built in wardrobe, sash window, radiator.

BATHROOM Comprising panelled bath with shower over, pedestal wash hand basin, sash window, low level w.c being tiled throughout.

OUTSIDE

BALCONY South facing balcony being a stone's throw from the beach.

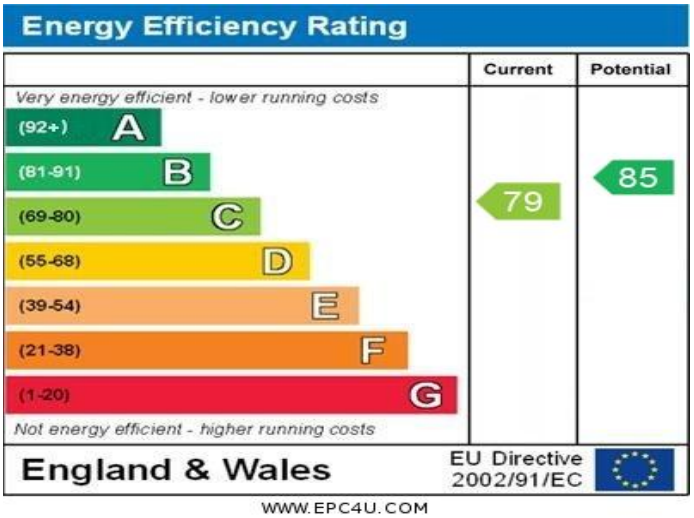
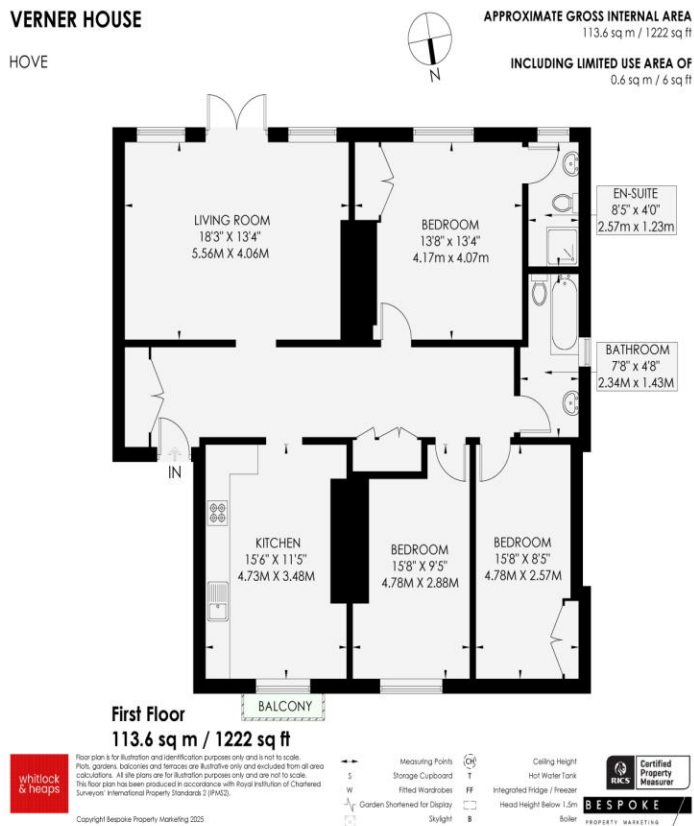
OUTGOINGS Share of Freehold

999 years upon completion

Service charge - £282.25 per month

VERNER HOUSE

HOVE



65 Sackville Road, Hove BN3 3WE
sales@whitlockandheaps.co.uk
01273 778577



Disclaimer: Whitlock & Heaps have produced these particulars in good faith and they are set out as a general guide. Accuracy is not guaranteed, nor do they form part of any contract. If there is any particular aspect of these details which you require any confirmation, please do contact us, especially if contemplating a long journey. All measurements are approximate. Fixtures and fittings, other than those mentioned above, to be agreed with the seller. Any services, systems or appliances at the property have not been tested.