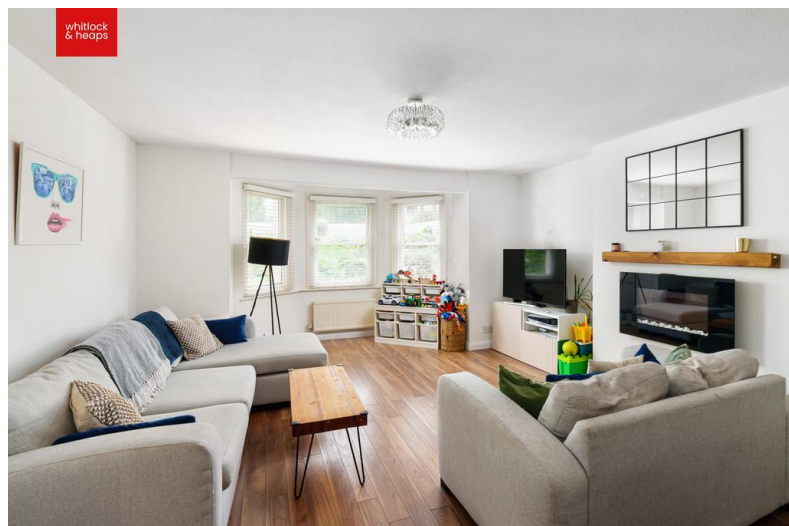




2 bedroom, Apartment



Denmark Villas

Hove

Asking Price Of £425,000

Leasehold

Council Tax Band: C

EPC Rating: D



PRIVATE STREET ENTRANCE

DESIRABLE LOCATION

TWO BEDROOMS

BATHROOM

sales@whitlockandheaps.co.uk

01273 778577

whitlockandheaps.co.uk