

Lower Ground 68 Denmark Villas

Hove BN3 3TJ

Offers In Excess Of £325,000

- ONE DOUBLE BEDROOM
- SPACIOUS FLAT
- PRIVATE PATIO
- MODERN KITCHEN
- MODERN BATHROOM
- GAS CENTRAL HEATING
- DOUBLE GLAZING
- NO ONWARD CHAIN

Whitlock & Heaps are delighted to present to market this one double bedroom flat forming the lower ground floor of this period bay fronted building. Boasting a large living room and bedroom, this flat is brought to market with no onward chain. Benefitting from double glazing and gas central heating.

Situated on the sought after Denmark Villas, this flat is within close proximity to Hove mainline station which is ideal for commuters. Both George Street and Church Road are a short distance away with their vast array of shopping facilities, eateries and cafés. Bus routes operate locally making public transport across the city simple.

COMMUNAL PORCH Housing meters.

ENTRANCE HALL Thermostat, cupboard housing alarm system, radiator.

LIVING ROOM Fitted cupboard, feature fireplace, radiator.

KITCHEN Incorporating large sink with mixer taps, vinyl work surfaces with cupboards below, fitted fridge, 'Lamona' electric hob with extractor above and oven below. Sash windows overlooking patio with separate double glazed window overlooking patio also.

BEDROOM Fitted wardrobe, radiator, sash bay window.

BATHROOM Comprising bath tub with separate shower cubicle, wash hand basin, fitted heated towel rail, wash hand basin, low level w.c, cupboard housing 'Baxi' gas fired combination boiler and space for washing machine, door onto patio.

OUTGOINGS

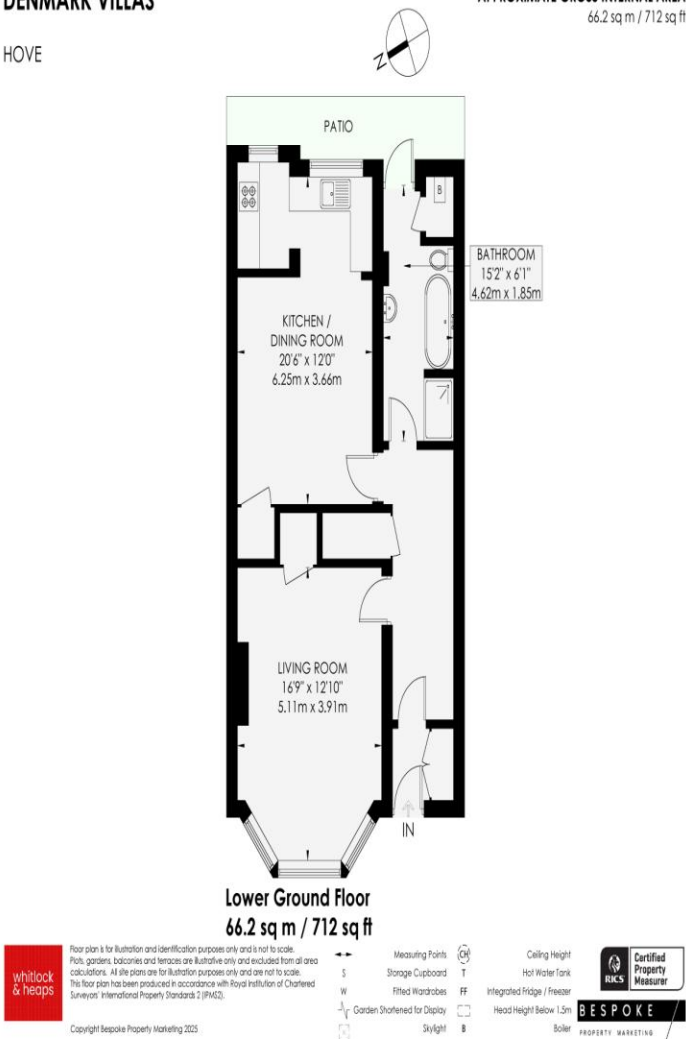
Lease: 99 years from May 2007
Ground rent: £100 per annum
Estimated Service Charge until 24th December 2025 – £2,427.00 which includes buildings insurance and reserve fund.

Council Tax Band B (taken from www.brighton-hove.gov.uk/council-tax).
We advise that you check this information, we will not be held responsible if the council tax band differs when occupying the property.

DENMARK VILLAS

HOVE

APPROXIMATE GROSS INTERNAL AREA
66.2 sq m / 712 sq ft



Score	Energy rating	Current	Potential
92+	A		
81-91	B		
69-80	C		77 C
55-68	D	66 D	
39-54	E		
21-38	F		
1-20	G		

Portslade Branch
48 Boundary Road, Portslade BN3 4EF
portslade@whitlockandheaps.co.uk
01273 422706

Hove Branch
65 Sackville Road, Hove BN3 3WE
hove@whitlockandheaps.co.uk
01273 778577



Disclaimer: Whitlock & Heaps have produced these particulars in good faith and they are set out as a general guide. Accuracy is not guaranteed, nor do they form part of any contract. If there is any particular aspect of these details which you require any confirmation, please do contact us, especially if contemplating a long journey. All measurements are approximate. Fixtures and fittings, other than those mentioned above, to be agreed with the seller. Any services, systems or appliances at the property have not been tested.