



8 Alpine Road

Hove BN3 5HG

Asking Price: £575,000

- WEST FACING PATIO GARDEN
- POETS CORNER
- THREE BEDROOMS
- BATHROOM

- THROUGH LIVING/DINING ROOM
- KITCHEN/BREAKFAST ROOM
- PRESENTED IN GOOD ORDER
- DESIRABLE LOCATION

Whitlock and Heaps bring to market this three bedroom Victorian bay fronted property offering good size accommodation being neutrally decorated throughout and offering scope to extend (stnc). The delightful ground floor living features a through living/dining room and separate kitchen/breakfast room with French doors leading onto the secluded West facing patio garden. Situated in the favoured Poets Corner district of Hove within walking distance of Aldrington and Hove mainline stations. An array of eateries, cafes and shopping facilities are all within easy reach as well as Hove seafront.

ENTRANCE HALL Stripped floorboards, radiator.

KITCHEN/BREAKFAST ROOM Double aspect and incorporating stainless steel sink unit with drainer and mixer tap, adjacent work surface with cupboards and drawers under, matching eye level wall cupboards, four ring gas hob with concealed extractor over, electric oven, appliance space, tiled splashback, UPVC double glazed window, 'Glow Worm' gas fired boiler, understairs cupboard, tiled floor, radiator, French doors to patio.

LIVING/DINING ROOM Gas fire with tiled insert and timber mantle over, bay window, fitted shelves and cupboards in alcoves, radiator, stripped floorboards, coving.

FIRST FLOOR

LANDING Two fitted cupboards with one housing the hot water cylinder, hatch to loft space.

BEDROOM 1 Bay window, two fitted double wardrobes, stripped floorboards, radiator.

BEDROOM 2 Two fitted double wardrobes, UPVC double glazed window, radiator.

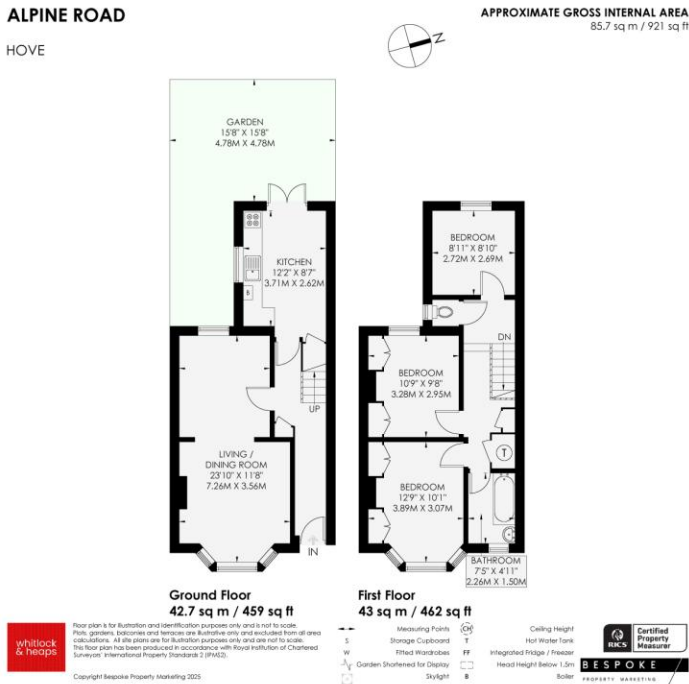
BEDROOM 3 UPVC double glazed window, radiator.

BATHROOM White suite comprising panelled bath with electric shower over, pedestal wash hand basin, part tiled walls, radiator, tiled floor.

CLOAKROOM Comprising low level w.c, radiator, UPVC double glazed window.

OUTSIDE
WEST FACING PATIO Being low maintenance and paved.

ALPINE ROAD
HOVE



Score	Energy rating	Current	Potential
92+	A		
81-91	B		
69-80	C		76 C
55-68	D		
39-54	E	53 E	
21-38	F		
1-20	G		

Portslade Branch
48 Boundary Road, Portslade BN3 4EF
portslade@whitlockandheaps.co.uk
01273 422706

Hove Branch
65 Sackville Road, Hove BN3 3WE
hove@whitlockandheaps.co.uk
01273 778577



Disclaimer: Whitlock & Heaps have produced these particulars in good faith and they are set out as a general guide. Accuracy is not guaranteed, nor do they form part of any contract. If there is any particular aspect of these details which you require any confirmation, please do contact us, especially if contemplating a long journey. All measurements are approximate. Fixtures and fittings, other than those mentioned above, to be agreed with the seller. Any services, systems or appliances at the property have not been tested.