

Flat 2, 7 Pembroke Crescent

Hove BN3 5DH

Asking Price Of £240,000

- SPACIOUS FLAT
- PART OF THE GROUND FLOOR
- PERIOD BUILDING
- PRIVATE PATIO
- COMMUNAL GARDEN
- MODERN KITCHEN
- SHARE OF FREEHOLD
- NO ONWARD CHAIN

Whitlock & Heaps are delighted to present to market this good size studio flat forming part of the ground floor of this period building. Boasting a modern feel throughout and benefitting from a private patio leading on to the communal garden.

Bus routes operate locally making public transport throughout the city easy. You are within close proximity to both Portland Road and George Street with their wide array of shopping facilities, eateries and cafés. The property is situated in the sought after Pembroke Crescent and is brought to market with a share in the freehold and no onward chain.

ENTRANCE HALL Hall to all rooms.

STUDIO Living space with UPVC double glazed window overlooking side.

KITCHEN/DINER Wooden work surfaces with cupboards below and matching eye level cupboards, fitted dishwasher, fridge freezer, four ring Bosch induction hob with extractor above, fitted Bosch oven, space for washing machine. Stainless steel sink with tiled splashback.

Dining area with doors to garden.

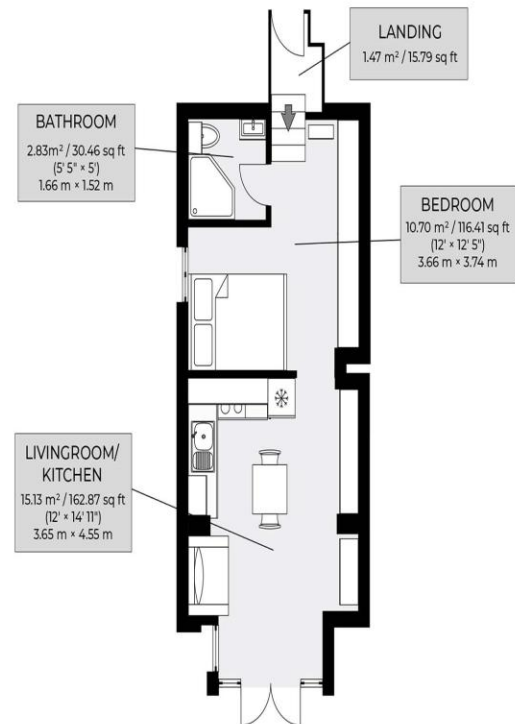
SHOWER ROOM Step in shower cubicle being fully tiled, vanity unit heated towel rail, low level w.c, extractor fan.

OUTSIDE Private paved patio, grass area being laid to lawn being communal.

OUTGOINGS Share in the freehold
Lease has 999 years from 2018
Maintenance £125 pcm
Building is self managed

Flat 2, 7 Pembroke Crescent, BN3 5DH, Hove

Approximate gross area 29.81 sq m / 322.11 sq ft



whitlock
& heaps

Floor plan is for illustration and identification purposes only and is not to scale. Plots, gardens, balconies and terraces are illustrative only and excluded from all area calculations. All site plans are for illustration purposes only and are not to scale. Measurements are approximate.

Portslade Branch

48 Boundary Road, Portslade BN3 4EF
portslade@whitlockandheaps.co.uk
01273 422706

Hove Branch

65 Sackville Road, Hove BN3 3WE
hove@whitlockandheaps.co.uk
01273 778577



Disclaimer: Whitlock & Heaps have produced these particulars in good faith and they are set out as a general guide. Accuracy is not guaranteed, nor do they form part of any contract. If there is any particular aspect of these details which you require any confirmation, please do contact us, especially if contemplating a long journey. All measurements are approximate. Fixtures and fittings, other than those mentioned above, to be agreed with the seller. Any services, systems or appliances at the property have not been tested.