

79a Livingstone Road, Hove BN3 3WN

Asking Price Of £275,000

- DOUBLE BEDROOM
- BATHROOM
- KITCHEN
- LIVING ROOM
- REAR GARDEN
- PRIVATE STREET ENTRANCE
- SHARE OF FREEHOLD
- NO ONWARD CHAIN

Whitlock and Heaps are pleased to bring to market this apartment forming the garden level of this bay fronted Victorian property offering good size one double bedroom accommodation that is presented in good order throughout with an open plan kitchen and living room. The property features a delightful rear garden and is approached via its own private street entrance. Being sold with a share in the freehold and with no onward chain.

Situated in this desirable location within walking distance of Hove mainline station and seafront. An array of eateries, cafes and shopping facilities are all within easy reach.

KITCHEN Incorporating sink unit with drainer and mixer tap, adjacent laminate worksurface with cupboards and drawers under, matching eye level wall cupboards, appliance space, tiled splashback.

LIVING ROOM UPVC double glazed bay window, heater.

BEDROOM Range of fitted wardrobes, heater, UPVC double glazed window and door to garden.

BATHROOM Comprising panelled bath with shower over, glazed shower screen, wash hand basin, low level w.c.

OUTSIDE REAR GARDEN
Mainly laid to lawn with patio area and shed.

OUTGOINGS Share of Freehold

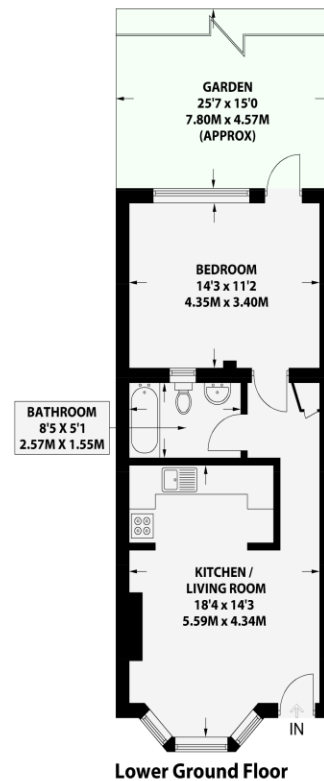
Remainder of 999 year lease

Maintenance: On a self administered basis as and when works are required.

LIVINGSTONE ROAD

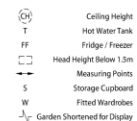
HOVE

APPROXIMATE GROSS INTERNAL AREA
499 sq ft / 46.4 sq m



Floor plan is for illustration and identification purposes only and is not to scale. Plots, gardens, balconies and terraces are illustrative only and excluded from all area calculations. All site plans are for illustration purposes only and are not to scale. This floor plan has been produced in accordance with Royal Institution of Chartered Surveyors' International Property Standards 2 (IPMS2). Every attempt has been made to ensure the accuracy however all measurements, fixtures, fittings and data shown is an approximate interpretation for illustrative purposes only.

© Whitlock & Heaps 2024



| Score | Energy rating | Current | Potential |
|-------|---------------|---------|-----------|
| 92+ | A | | |
| 81-91 | B | | |
| 69-80 | C | | 71 C |
| 55-68 | D | 67 D | |
| 39-54 | E | | |
| 21-38 | F | | |
| 1-20 | G | | |

Portslade Branch
48 Boundary Road, Portslade BN3 4EF
portslade@whitlockandheaps.co.uk
01273 422706

Hove Branch
65 Sackville Road, Hove BN3 3WE
hove@whitlockandheaps.co.uk
01273 778577



Disclaimer: Whitlock & Heaps have produced these particulars in good faith and they are set out as a general guide. Accuracy is not guaranteed, nor do they form part of any contract. If there is any particular aspect of these details which you require any confirmation, please do contact us, especially if contemplating a long journey. All measurements are approximate. Fixtures and fittings, other than those mentioned above, to be agreed with the seller. Any services, systems or appliances at the property have not been tested.