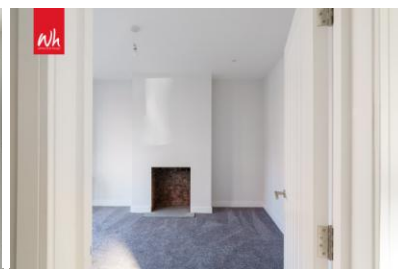


wh
whitlock & heaps



54 Colbourne Road, Hove BN3 1TB

Asking Price Of £850,000

- STUNNING FAMILY HOME
- REFURBISHED AND EXTENDED
- FOUR BEDROOMS
- BEDROOM 5/STUDY

- BEAUTIFUL KITCHEN/LIVING ROOM
- TWO BATHROOMS
- CLOAKROOM
- SITTING ROOM

wh
whitlock & heaps

01273 778577
whitlockandheaps.co.uk

Whitlock and Heaps are delighted to offer to market this stunning family home that has just undergone an extensive refurbishment programme which included a loft conversion and creating a fabulous open plan kitchen/living room with bi-fold doors leading onto the South facing rear garden. The property has been finished to an excellent standard with versatile four/five-bedroom accommodation arranged over four floors with a separate sitting room and study/bedroom 5. The house also boasts an ensuite shower room to the master bedroom and two further family bathrooms with a very useful utility room on the ground floor. Colbourne Road

is situated in this most desirable location within walking distance of the vibrant Seven dials. Brighton City Centre and mainline station is also within easy reach.

ENTRANCE HALL Radiator, UPVC double glazed frosted window.

CLOAKROOM Comprising wash-hand basin with cupboard under, low level w.c.

SITTING ROOM UPVC double glazed bay window, radiator, feature fireplace.

BEDROOM 5/STUDY UPVC double glazed window, radiator.

UTILITY ROOM Comprising stainless steel sink unit with drainer and mixer tap, adjacent laminate worksurface, cupboard housing Worcester' gas-fired boiler and water cylinder, additional storage cupboards and plumbing for washing machine, UPVC double glazed window, radiator.

GARDEN LEVEL Fitted cupboard.

KITCHEN/LIVING ROOM Incorporating one and a half bowl sink unit with mixer tap, adjacent worksurface with wide range of cupboards and drawers under, matching eye-level wall cupboards, 5-ring induction hob with concealed extractor over, eye-level Bosch' double oven, integrated fridge/freezer and washing machine, seating area, opening onto the living/dining area with bifold doors to the garden, underfloor heating.

FIRST FLOOR

LANDING UPVC double glazed window.

BEDROOM 1 UPVC double glazed window, radiator.

EN-SUITE Comprising walk-in shower, wash-hand basin with cupboard under, low level w.c., tiled floor and part tiled walls, UPVC double glazed window, heated ladder style towel rail.

BEDROOM 2 UPVC double glazed window, radiator.

BATHROOM Comprising panelled bath with mixer tap and separate shower over, glazed shower screen, wash-hand basin

with cupboard under, low level w.c., heated ladder style towel rail, UPVC double glazed window, tiled floor and part tiled walls.

TOP FLOOR

LANDING Velux window, eaves storage.

BEDROOM 3 UPVC double glazed window, radiator.

BEDROOM 4 Two velux windows, radiator.

BATHROOM White suite comprising panelled bath with mixer tap and separate shower over, glazed shower screen, wash-hand basin with cupboard under, low level w.c., heated ladder style towel rail, tiled floor and part tiled walls, UPVC double glazed window.

OUTSIDE

SOUTH FACING GARDEN Patio with area of lawn, side gate offering rear access.

COLBOURNE ROAD

HOVE

APPROXIMATE GROSS INTERNAL AREA (EXCLUDING LIMITED USE AREA)
1500 sq ft / 139.3 sq m

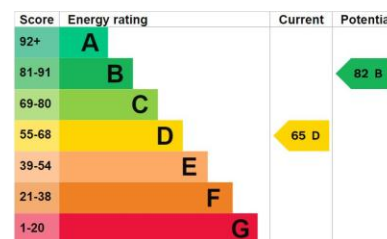
APPROXIMATE GROSS INTERNAL AREA (INCLUDING LIMITED USE AREA)
1542 sq ft / 143.2 sq m



Floor plan is for illustration and identification purposes only and is not to scale. Plans, gardens, balconies and terraces are illustrative only and excluded from all area calculations. All site plans are for illustration purposes only and are not to scale. This floor plan has been produced in accordance with Royal Institution of Chartered Surveyors' International Property Standards 2 (IPMS2). Every attempt has been made to ensure the accuracy however all measurements, fixtures, fittings and data shown is an approximate interpretation for illustrative purposes only.

© Whitlock & Heaps 2024

T Ceiling Height
 HW Hot Water Tank
 FF Fridge / Freezer
 Head Height Below 1.5m
 M Measuring Points
 S Storage Cupboard
 W Fitted Wardrobes
 G Garden Stopped for Disability



Portslade Branch

48 Boundary Road, Portslade BN3 4EF
portslade@whitlockandheaps.co.uk
01273 422706

Hove Branch

65 Sackville Road, Hove BN3 3WE
hove@whitlockandheaps.co.uk
01273 778577



Disclaimer: Whitlock & Heaps have produced these particulars in good faith and they are set out as a general guide. Accuracy is not guaranteed, nor do they form part of any contract. If there is any particular aspect of these details which you require any confirmation, please do contact us, especially if contemplating a long journey. All measurements are approximate. Fixtures and fittings, other than those mentioned above, to be agreed with the seller. Any services, systems or appliances at the property have not been tested.