



2

Bedrooms



1

Bathroom

Offers in excess of £150,000
Stretford Road, Hulme, Manchester. M15 5TN



C & R HULME offer for sale this fantastic 2 bedroom ground floor apartment in Hulme. The apartment which is just a stones throw away from Manchester Metropolitan University Birley Fields Campus comprises; entrance hall, lounge, kitchen, 2 double bedrooms and bathroom. The apartment offers double glazed windows and a secure parking space with electronic gates. Local amenities include ASDA Hulme and the high Street with the city centre in close proximity. The local motorway network is in close proximity. Great buy for a first time buyer or an investor.

Entrance Hall

Storage heater. Entry phone system. Power point. Smoke alarm. Ceiling light point.

Storage Room

Housing immersion tank. Providing good storage space & fuse box.

Lounge 5.91m x 4.15m (19' 5" x 13' 7")

2 x double glazed windows to the front elevation. Adequate power points. 2 storage wall heaters. T.V, phone and satellite points. 2 ceiling light points.

Kitchen 2.60m x 1.81m (8' 6" x 5' 11")

Range of base and wall units finished in maple with grey speckled worktops. Inset sink with drainer and chrome mixer tap. Orange & green splash back tiles. Adequate power points. Integrated electric hob and oven & extractor fan. Space for washing machine & fridge freezer. Ceiling light point.

Bedroom 1 3.70m x 3.36m (12' 2" x 11')

Double glazed patio to rear elevation. Adequate power points. TV point. Ceiling light point & 2 wall lights Door to bathroom.

Bathroom 2.60m x 1.93m (8' 6" x 6' 4")

Jack & Style. White 3 piece suite comprising; W.C, hand wash basin and bath with electric shower over. White tiles to full height around bath.. Extractor duct. Ceiling light point. Door to master bedroom.

Bedroom 2 3.36m x 2.14m (11' x 7')

Double glazed window to rear elevation. Adequate power points. Phone point. Ceiling light point.

External

Communal grounds with allocated parking

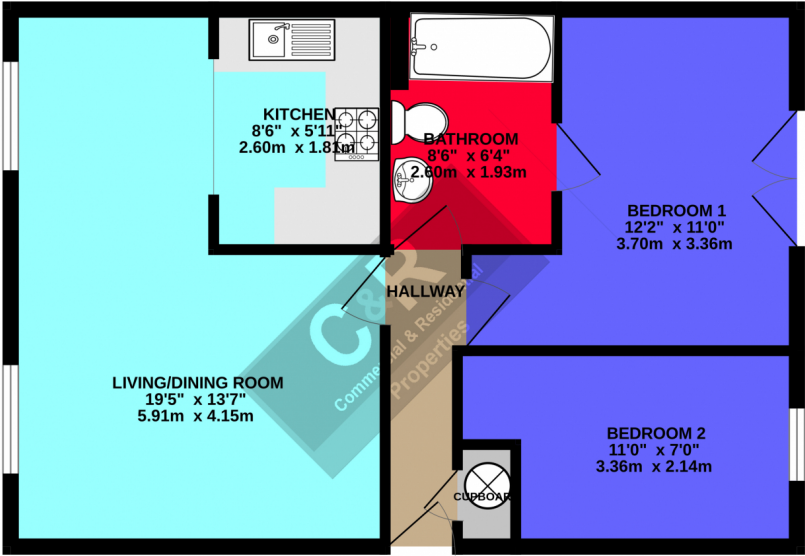
Tenure

Leasehold: 150 yrs from 14/10/1999 Service charge: £180.30per month which includes ground rent payable to Riverside Housing. EPC RATING: TBA

Agents Notes

NOTICE: C & R Properties for themselves and for the vendors or lessors of this property who's agents they are give notice that: (i) the particulars are set out as a general outline for the guidance of intending purchasers or lessees, and do not constitute, nor part of an offer or contract; (ii) all descriptions, dimensions, reference to condition and necessary permissions for use and occupation, and other details are given in good faith and are believed to be correct but any intending purchasers or tenants should not rely on them as statements or representations of fact but must satisfy themselves by inspection or other wise as to the correctness of each of them; (iii) no person in the employment of C & R Properties has any authority to make or give any representation or warranty whatever in relation to this property.

GROUND FLOOR



C & R PROPERTIES

Whilst every attempt has been made to ensure the accuracy of the floorplan contained here, measurements of doors, windows, rooms and any other items are approximate and no responsibility is taken for any error, omission or mis-statement. This plan is for illustrative purposes only and should be used as such by any prospective purchaser. The services, systems and appliances shown have not been tested and no guarantee as to their operability or efficiency can be given.
Made with Mergo ©2025

