



35 SUFFOLK PARADE, CHELTENHAM, GLOUCESTERSHIRE, GL50 2AD

A FANTASTIC MEWS STYLED HOUSE ARRANGED OVER TWO FLOORS OFFERING UNIQUE ACCOMMODATION IN THE HEART OF CENTRAL CHELTENHAM. ENTRANCE HALL, 27' OPEN LIVING SPACE WITH A MODERN KITCHEN TO ONE END, TWO BEDROOMS AND A LUXURIOUSLY APPOINTED BATHROOM.

ACCOMMODATION:

Entrance hall, open plan living space, well appointed kitchen, landing, two bedrooms and bathroom. 14'x5'10" paved front terrace.

ADDITIONAL:

Gas fired central heating to radiators.

Unfurnished.

No sharers, smokers or pets.

PARKING:

Permit parking might be available Cheltenham Suffolks Zone 8

INCLUDED:

Fridge/freezer.

Oven.

5 ring gas hob & extractor.

Dishwasher.

Washing machine.

Tumble dryer.

TERM

12 months minimum term. No pets. No smokers.

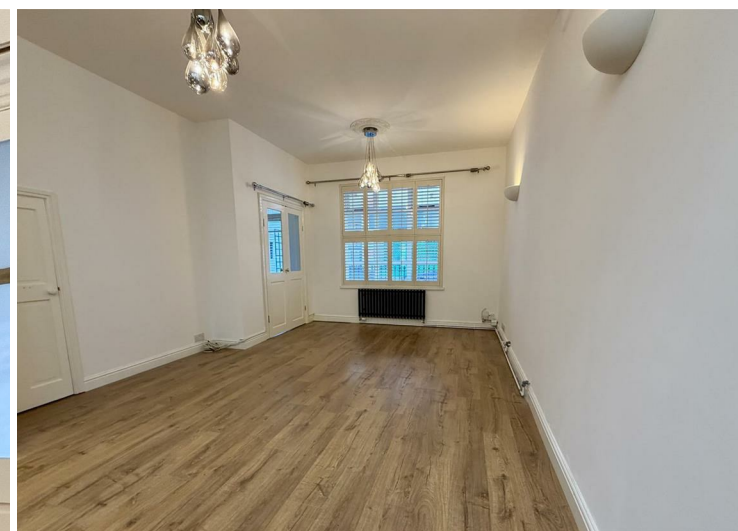
VIEWING AND SHOWING TIMES:

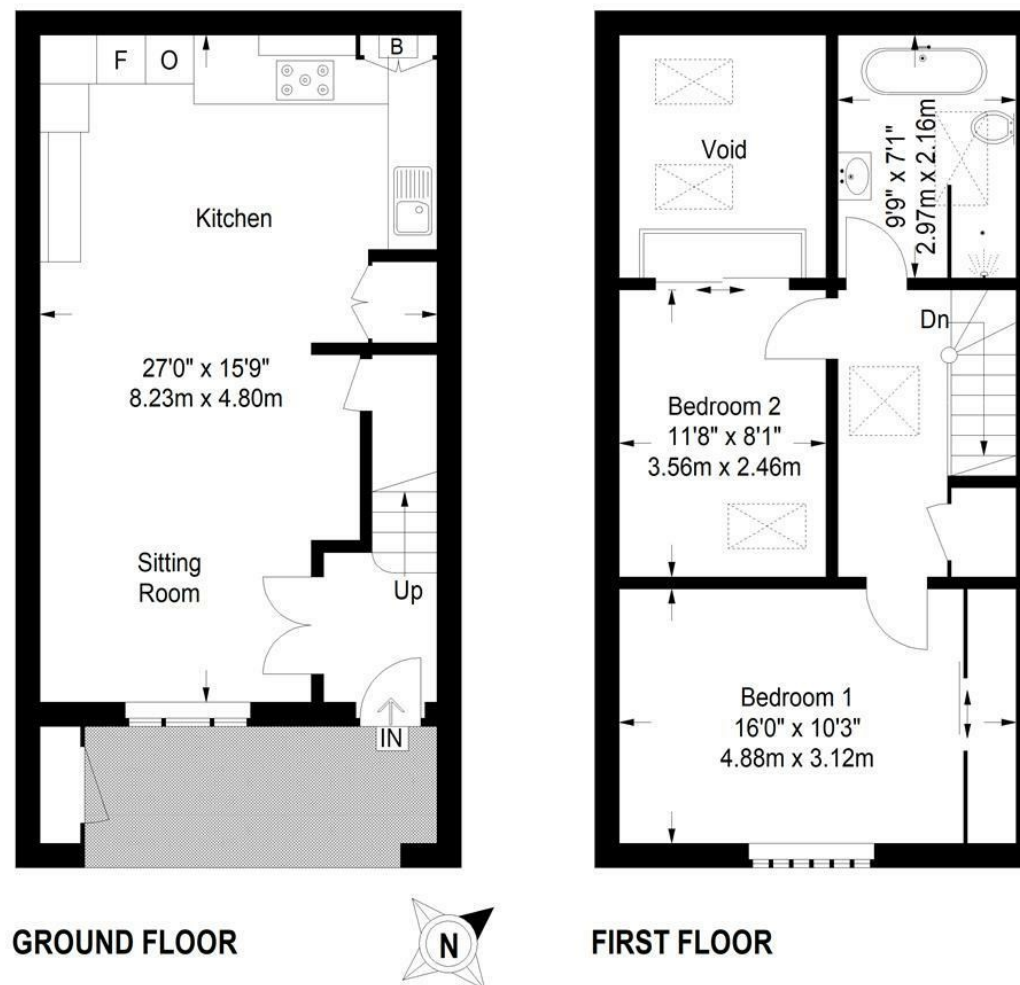
Read Maurice show our rental property during weekdays only. No application may be made without a physical viewing of the property. For certain properties block viewings will be offered and you are advised to attend at the earliest opportunity if this property is of interest to you.

GENERAL:

Mains services are believed to be connected.







Approximate Gross Internal Area
(Excluding Void / External Cupboard)
873 sq ft / 81.1 sq m

Illustration for identification purposes only, measurements are approximate and are not to scale.
Please check all details before making any decisions reliant upon them.
Copyright Read Maurice. (ID901188)

EPC: D
Council Tax: C
Area: 873.00 sq ft
Property Ref: 18032373

35 SUFFOLK PARADE, CHELTENHAM, GLOUCESTERSHIRE, GL50 2AD

48 Andover Road, Cheltenham, GL50 2TL
Tel: 01242 241122
Email: post@readmaurice.co.uk

These particulars, whilst believed to be accurate are set out as a general outline only for guidance and do not constitute any part of an offer or contract. Intending purchasers should not rely on them as statements or representation of fact, but must satisfy themselves by inspection or otherwise as to their accuracy. We have not carried out a detailed survey nor tested the services, appliances and specific fittings. Room sizes should not be relied upon for carpets and furnishings. The measurements given are approximate. No person in this firm's employment has the authority to make or give any representation or warranty in respect of the property. PRN: 18128602 - Date of printing 2nd December 2025
Read Maurice Residential Limited is registered in England No. 04302959