



FLAT 1 DOUGLAS HOUSE PARABOLA ROAD, CHELTENHAM, GLOUCESTERSHIRE, GL50 3AH

AN ATTRACTIVE ONE BEDROOM APARTMENT SET IN ONE OF THE AREA'S MOST DESIRABLE LOCATION ONLY A SHORT WALK TO THE PROMENADE AND MONTPELLIER AND WITHIN SIGHT OF CHELTENHAM LADIES COLLEGE



THE PROPERTY

Situated on the highly sought-after Parabola Road in Montpellier, this elegant one-bedroom apartment forms part of the beautifully converted Douglas House a distinguished period building transformed by David Deacon Homes in 2006. This tree-lined location is renowned for its handsome period villas, proximity to the prestigious Cheltenham Ladies' College, Promenade and Montpellier.

1 Douglas House benefits from its own private entrance and offers well-proportioned, light-filled accommodation throughout. The open-plan reception room features a stylish, modern kitchen fitted with a range of wall and base units, as well as integrated appliances. This space flows seamlessly into the apartment's private south-facing garden, creating a perfect blend of indoor and outdoor living. There is also a shower room.

OUTSIDE

The garden is fully enclosed and enjoys a sunny southerly aspect ideal for entertaining, relaxing, or al fresco dining. It has a generous paved terrace and a well stocked garden with a lawn area. A gate leads directly to the allocated parking and there is also an outside water tap.

LOCATION

Parabola Road is widely regarded as one of Cheltenham's premier addresses. Just a short stroll from the fashionable Montpellier district, the area offers an excellent selection of local boutiques, artisan coffee shops, salons, convenience stores, and world-class restaurants such as The Ivy. The location also provides easy access to Cheltenham's shopping and cultural hubs.

For commuters, the property is ideally placed with excellent road links to the M5 motorway, the A40 to Oxford and London, and Cheltenham Spa train station is just over a mile away, offering direct services to major UK cities.

PARKING

The property has one allocated parking.

LEASEHOLD

Date : 12 August 2009

Term : 999 years commencing on and including 1 May 2007

Freeholder: Maple (309) Limited

Service Charge: £2,440.66

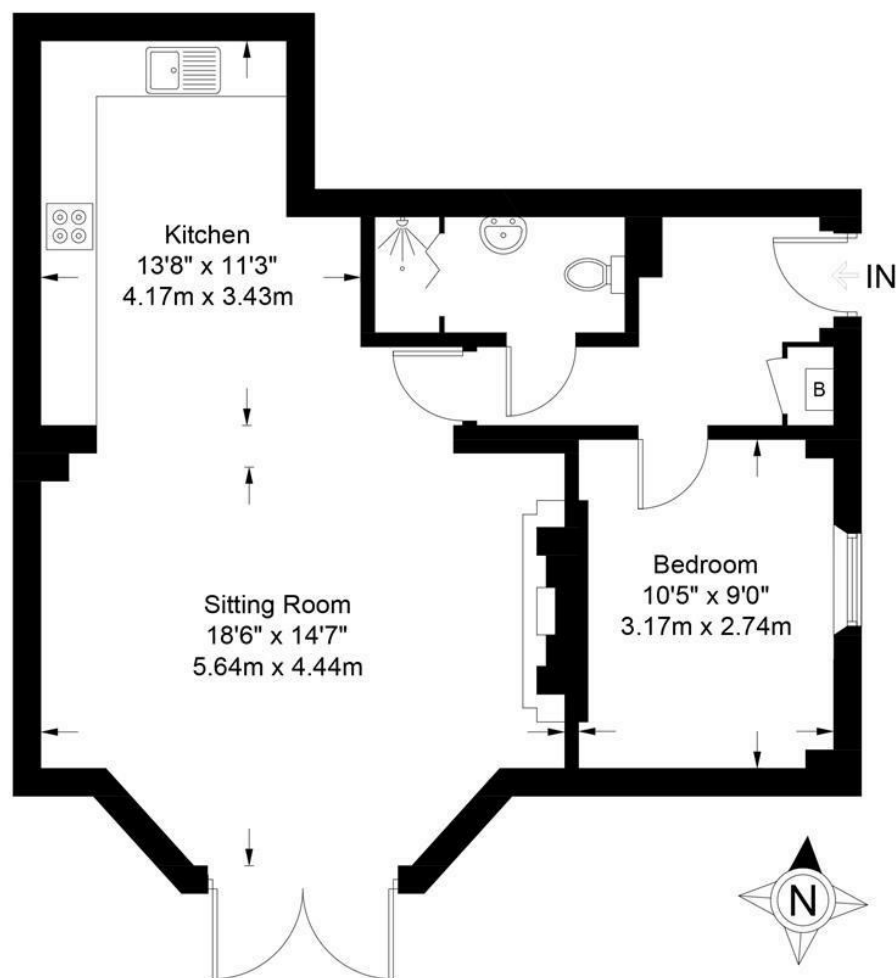
Ground Rent: TBC

Managing Agents: Colmore Gaskill

Pets: Considered on a case by case basis.

Please note some of the photographs are CGI images with furniture. The property is currently unfurnished.





Approximate Gross Internal Area = 644 sq ft / 59.8 sq m
 Illustration for identification purposes only, measurements are approximate and are not to scale.
 Please check all details before making any decisions reliant upon them.
 Copyright Read Maurice. (ID1241703)



Tenure: Leasehold
EPC: D
Council Tax: B
Area: 644.00 sq ft
Property Ref: 19513341

48 Andover Road, Cheltenham, GL50 2TL
 Tel: 01242 241122
 Email: post@readmaurice.co.uk

FLAT 1 DOUGLAS HOUSE PARABOLA ROAD, CHELTENHAM, GLOUCESTERSHIRE, GL50 3AH

These particulars, whilst believed to be accurate are set out as a general outline only for guidance and do not constitute any part of an offer or contract. Intending purchasers should not rely on them as statements or representation of fact, but must satisfy themselves by inspection or otherwise as to their accuracy. We have not carried out a detailed survey nor tested the services, appliances and specific fittings. Room sizes should not be relied upon for carpets and furnishings. The measurements given are approximate. No person in this firm's employment has the authority to make or give any representation or warranty in respect of the property. PRN: 18128602 - Date of printing 8th December 2025
 Read Maurice Residential Limited is registered in England No. 04302959