



1 GREVILLE HOUSE 37 GRATTON ROAD, CHELTENHAM, GLOUCESTERSHIRE, GL50 2BZ



The property has its own private entrance via a portico which leads to the front door and the accommodation is stylishly arranged over two floors and displays a wealth of original features including decorative ceiling mouldings, tall ceilings and ornate woodwork. The wide entrance hall leads to the staircase of the original house which sweeps up to the first floor. In addition to the ground floor is an impressive reception room with floor to ceiling windows overlooking the gardens, cloakroom and a fitted kitchen / breakfast room.

Upstairs there is a wide naturally lit landing providing space for a study area if required. There are two bedrooms, the master having a large en suite bathroom and a shower room with dual access from the landing and second bedroom.

ACCOMMODATION:

Reception hall and first floor landing
Drawing room with floor to ceiling sash windows
Fitted kitchen with dining area
Cloakroom
Two bedrooms
Two ensuites

PARKING:

Allocated parking for one car

ADDITIONAL:

Gas central heating
Sash single glazed windows

INCLUDED:

Fridge freezer
Washing machine
Dishwasher
Oven & hob

TERM

12 months minimum term. No smokers. No sharers. No pets

VIEWING AND SHOWING TIMES:

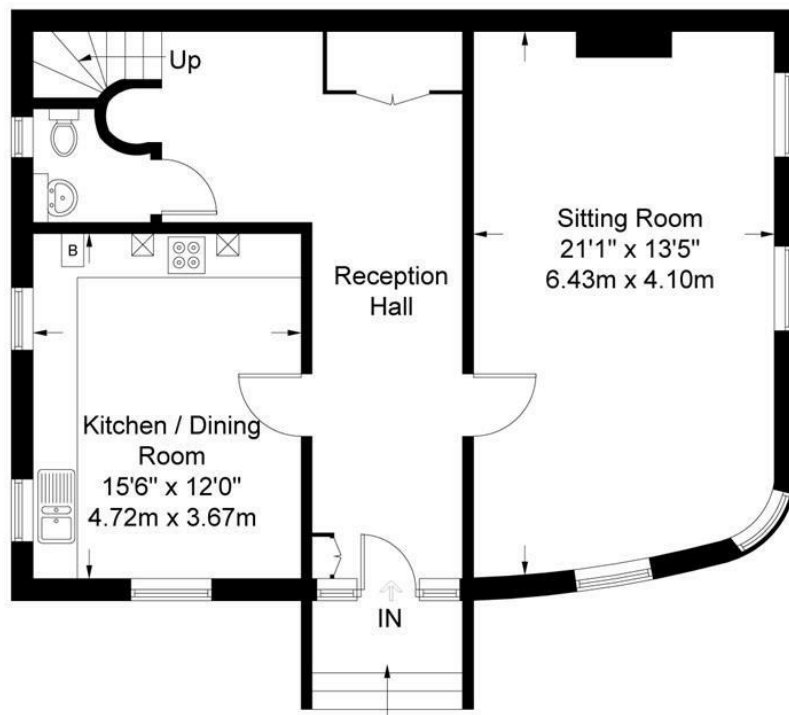
Read Maurice show our rental property during weekdays only. No application may be made without a physical viewing of the property. To assist with long distance travel there maybe a 360° virtual tour available to view online. For certain properties block viewings will be offered and you are advised to attend at the earliest opportunity if this property is of interest to you.

GENERAL:

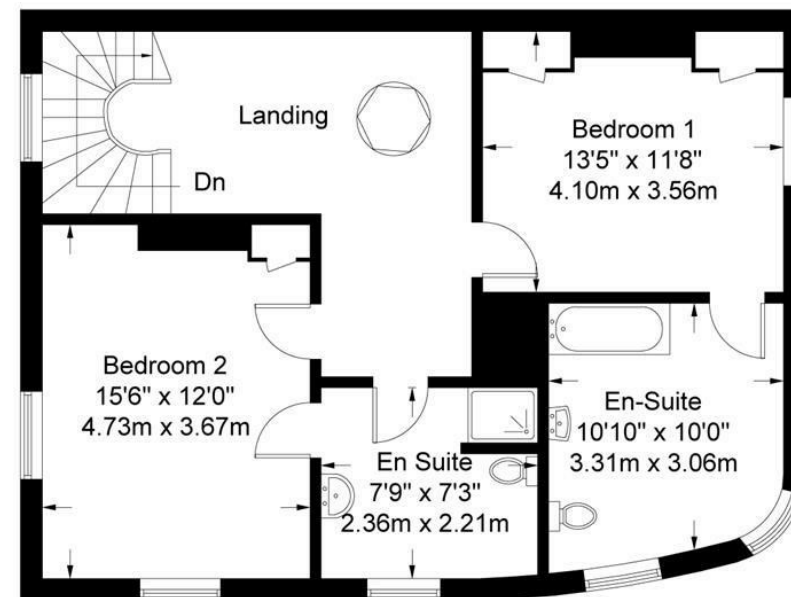
Mains services are believed to be connected. TV is also available with a BT subscription.







GROUND FLOOR



FIRST FLOOR

Approximate Gross Internal Area = 1595 sq ft / 148.2 sq m

Illustration for identification purposes only, measurements are approximate and are not to scale.
Please check all details before making any decisions reliant upon them.
Copyright Read Maurice. (ID206642)



1 GREVILLE HOUSE 37 GRATTON ROAD, CHELTENHAM, GLOUCESTERSHIRE, GL50 2BZ

These particulars, whilst believed to be accurate are set out as a general outline only for guidance and do not constitute any part of an offer or contract. Intending purchasers should not rely on them as statements or representation of fact, but must satisfy themselves by inspection or otherwise as to their accuracy. We have not carried out a detailed survey nor tested the services, appliances and specific fittings. Room sizes should not be relied upon for carpets and furnishings. The measurements given are approximate. No person in this firm's employment has the authority to make or give any representation or warranty in respect of the property. PRN: 18128602 - Read Maurice Residential Limited is registered in England No. 04302959

EPC: D
Council Tax: D
Area: 1595.00 sq ft
Property Ref: 17457716

48 Andover Road, Cheltenham, GL50 2TL
Tel: 01242 241122
Email: post@readmaurice.co.uk