



Flat 5 28 Lansdown Crescent, Cheltenham, Gloucestershire, GL50 2LF



## Flat 5 28 Lansdown Crescent, Cheltenham, Gloucestershire, GL50 2LF

### ACCOMMODATION:

Entrance hall, sitting room, fitted kitchen, 2 bedrooms and bathroom.

### ADDITIONAL:

FURNISHED AS PER PHOTOGRAPHS

Gas fired central heating to radiators.

Sorry – NO PETS. NO SHARERS

### PARKING:

Permit parking on street available.

### INCLUDED:

Washing machine, Gas hob, oven, hood & fridge/freezer.

### TERM:

12 Months

### AVAILABLE:

Now

### VIEWING AND SHOWING TIMES:

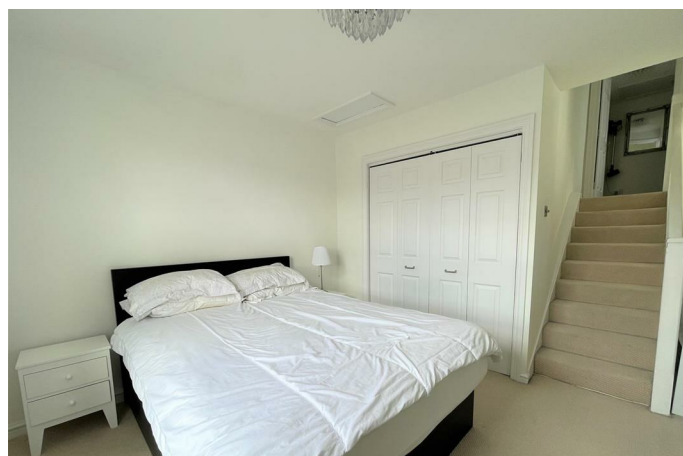
Read Maurice show our rental property during weekdays only. No application may be made without a physical viewing of the property. For certain properties block viewings will be offered and you are advised to attend at the earliest opportunity if this property is of interest to you.

### GENERAL:

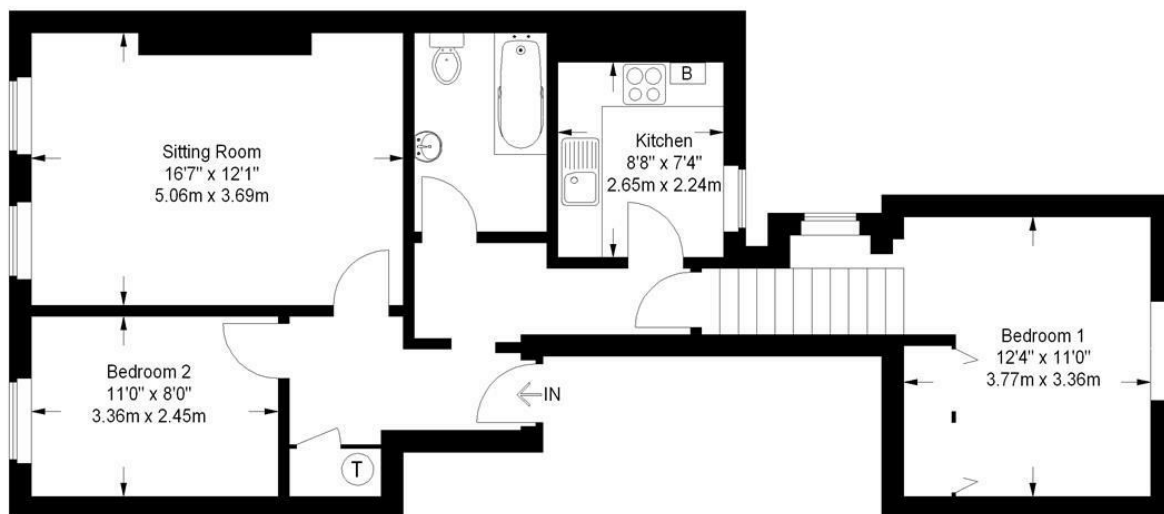
Mains services are believed to be connected.











Approximate Gross Internal Area = 710 sq ft / 66 sq m

Illustration for identification purposes only, measurements are approximate and are not to scale.  
Please check all details before making any decisions reliant upon them.  
Copyright Read Maurice. (ID 51165)



**Flat 5 28 Lansdown Crescent, Cheltenham, Gloucestershire, GL50 2LF**

These particulars, whilst believed to be accurate are set out as a general outline only for guidance and do not constitute any part of an offer or contract. Intending purchasers should not rely on them as statements or representation of fact, but must satisfy themselves by inspection or otherwise as to their accuracy. We have not carried out a detailed survey nor tested the services, appliances and specific fittings. Room sizes should not be relied upon for carpets and furnishings. The measurements given are approximate. No person in this firm's employment has the authority to make or give any representation or warranty in respect of the property. PRN: 16434464 - Date of printing 8th May 2025

**EPC: Band D**

**Rating: 57**

**Council Tax: B**

**Area: 710.00 sq ft**

**readmaurice** 

**48 Andover Road, Cheltenham, GL50 2TL**

**Tel: 01242 241122**

**Email: [post@readmaurice.co.uk](mailto:post@readmaurice.co.uk)**

**[www.readmaurice.co.uk](http://www.readmaurice.co.uk)**