

These particulars, whilst believed to be accurate are set out as a general outline only for guidance and do not constitute any part of an offer or contract. Intending purchasers should not rely on them as statements or representation of fact, but must satisfy themselves by inspection or otherwise as to their accuracy. We have not carried out a detailed survey nor tested the services, appliances and specific fittings. Room sizes should not be relied upon for carpets and furnishings. The measurements given are approximate. No person in this firm's employment has the authority to make or give any representation or warranty in respect of the property. PRN: 19245878 - Date of printing 8th May 2025

5 OAKFIELD STREET, TIVOLI, CHELTENHAM, GLOUCESTERSHIRE, GL50 2UJ

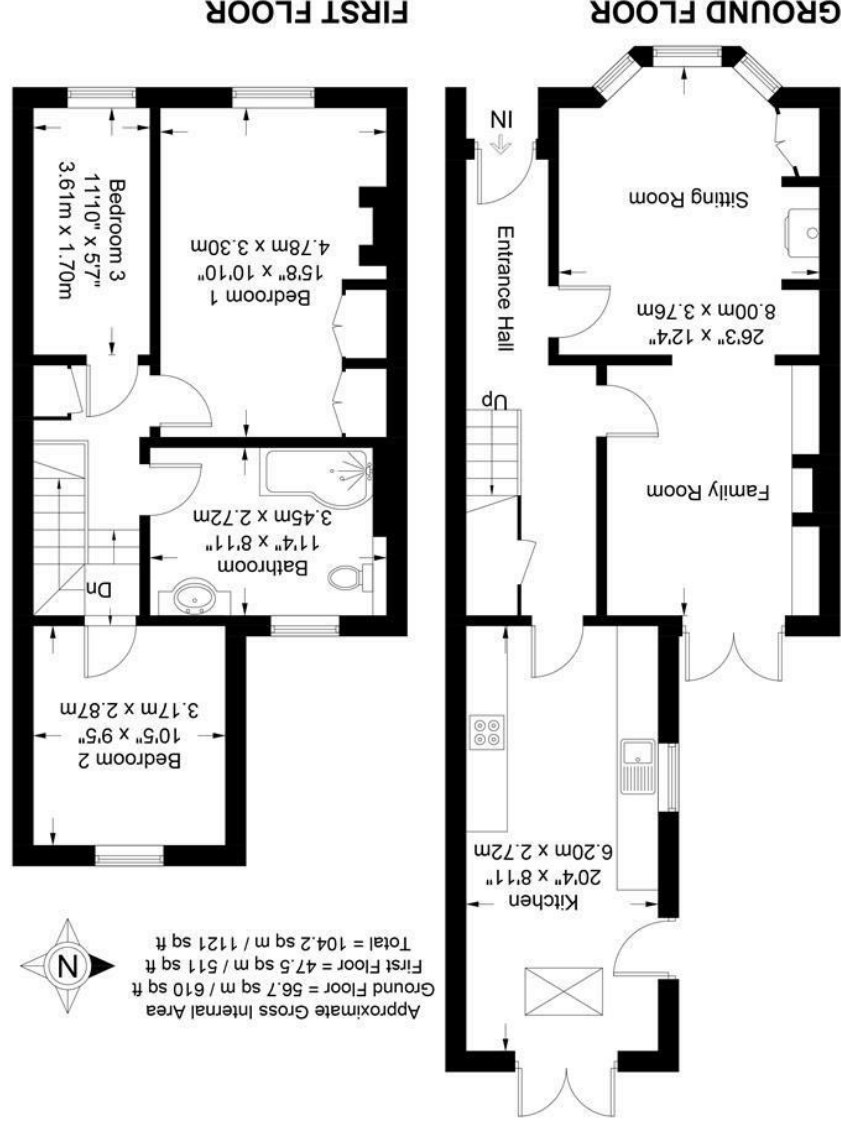


48 Andover Road, Cheltenham, GL50 2TL
Tel: 01242 241122
Email: post@readmaurice.co.uk
www.readmaurice.co.uk

EPC: Band D
Rating: 56
Council Tax: C

Area: 1121.00 sq ft

Illustration for identification purposes only, measurements are approximate and are not to scale.
Please check all details before making any decisions reliant upon them.
Copyright Readmaurice. (ID1172650)





5 OAKFIELD STREET, TIVOLI, CHELTENHAM, GLOUCESTERSHIRE, GL50 2UJ

A FINE EXAMPLE OF A THREE BEDROOM BAY WINDOWED TOWNHOUSE IN A POPULAR AREA OF TIVOLI. THE PROPERTY HAS BEEN RECENTLY DECORATED AND ALSO UPGRADED AND WILL BE FOUND IN GOOD CONDITION.

About the property

5 Oakfield Street is a generous townhouse offered with a traditionally laid out ground floor with an amended first floor which creates an impressive arrangement of accommodation. The property is set back from Oakfield Street with wrought iron railings enclosing the front garden. The property thankfully keeps many enhanced period features and has recently been decorated. The ground floor enjoys exposed wood flooring with carpeting to the upper floor.

The entrance hall leads to all the ground floor accommodation. The double width sitting room is c.26' with a three-section sash bay window to the front along with a tall sash window offering an aspect over the garden. The front sitting room has a log burner with an ornate cast iron inset surround in the rear section. To the sides of both chimney breasts are built in storage cupboards and drawers. Plantation blinds provide a degree of privacy and shade from the evening sun.

The kitchen to the rear has been extended with a range of fitted wall and base units and a large pantry cupboard with space for domestic appliances.

On the first floor the main bedroom has built in wardrobes. The bathroom is spacious and fitted with a white suite including a 'p-shaped bath' with shower over, lavatory and vanity sink.

To the rear is an enclosed garden laid to lawn with a valuable side return. There is also rear access via a path to the end of the terrace. Parking is freely available to the front and unrestricted.

Agents Note: The sash windows have been replaced with superior wood double glazed sash windows by Renosash. The front door is also bespoke and crafted by Timber Windows of Cheltenham.



