



14 Shaftesbury Hall St. Georges Place, Cheltenham, GL50 3PX

A PERIOD 2 BEDROOM FIRST FLOOR APARTMENT IN THIS HUGELY POPULAR VICTORIAN CONVERSION KNOWN AS SHAFTESBURY HALL WHICH IS ONLY A VERY SHORT DISTANCE FROM THE TOWN CENTRE.

Shaftesbury Hall is a gated development of this notable Victorian conversion located in the heart of Cheltenham.

This delightful 2-bedroom flat boasts a spacious 743 sq ft of living space including a fabulous triple aspect sitting room commanding a view over the courtyard and ornamental fishpond. It also has allocated secure parking for 1 car.

One of the highlights of this property is its attractive setting, offering a peaceful retreat from the hustle and bustle of the town. With secure parking available for one vehicle, you can enjoy the convenience of having your own designated space in this sought-after location.

Located close to town, Shaftesbury Hall provides easy access to a variety of amenities, including shops, restaurants, and entertainment options.

Whether you're looking to explore the local culture or simply unwind in a tranquil environment, this property offers the best of both worlds.

Furthermore, this chain-free flat presents a fantastic opportunity for those looking to make a hassle-free move.

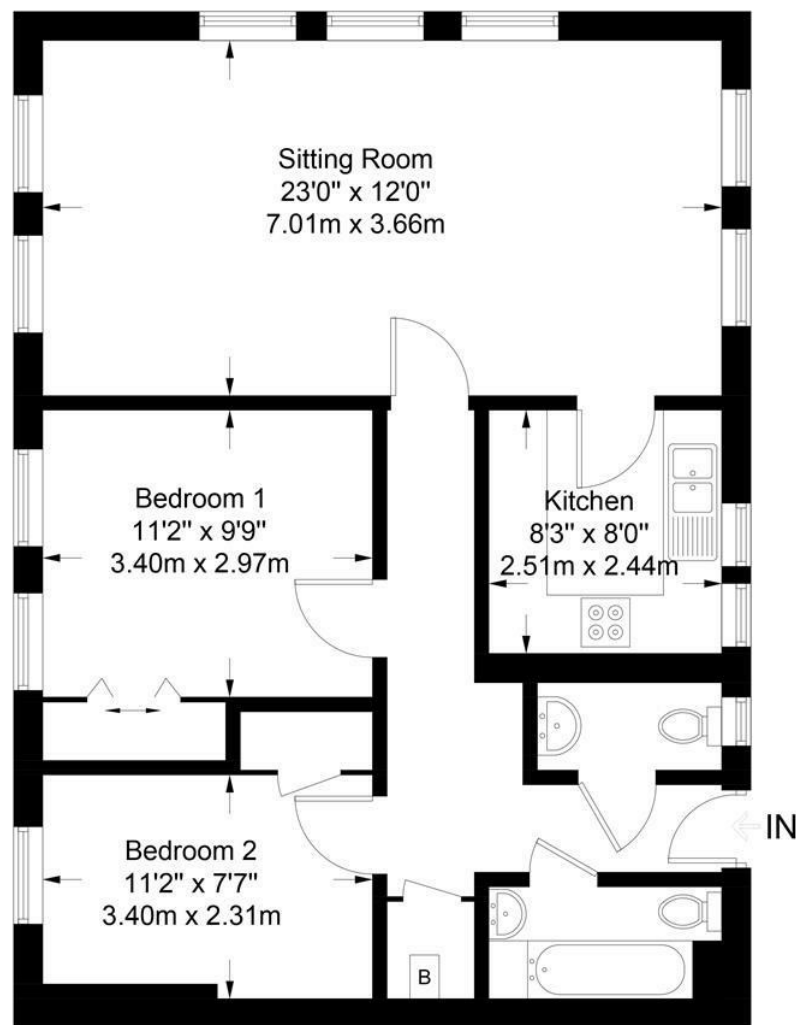
Tenure: Leasehold with share of freehold
Freeholder: Chelsea Square Management Limited
Lease: 999 years from 8th April 2022
Service Charge: £3175.36 P.A - see Agents note below
Ground Rent: £100 per annum
Managing Agents: Ash Chartered Surveyors

AGENTS NOTE: We are advised that by the vendor that the service charge is presently high due to previous payments not being collected.
Any outstanding balance due on the property will be paid off.

Moving forward it is likely to be in the region of £2000 P.A.







Approximate Gross Internal Area = 743 sq ft / 69.0 sq m

Illustration for identification purposes only, measurements are approximate and are not to scale.
Please check all details before making any decisions reliant upon them.
Copyright Read Maurice. (ID326633)

Tenure: Leasehold - Share of Freehold

EPC: D

Council Tax: D

Area: 743.00 sq ft

Property Ref: 18954510

48 Andover Road, Cheltenham, GL50 2TL

Tel: 01242 241122

Email: post@readmaurice.co.uk

14 Shaftesbury Hall St. Georges Place, Cheltenham, GL50 3PX

These particulars, whilst believed to be accurate are set out as a general outline only for guidance and do not constitute any part of an offer or contract. Intending purchasers should not rely on them as statements or representation of fact, but must satisfy themselves by inspection or otherwise as to their accuracy. We have not carried out a detailed survey nor tested the services, appliances and specific fittings. Room sizes should not be relied upon for carpets and furnishings. The measurements given are approximate. No person in this firm's employment has the authority to make or give any representation or warranty in respect of the property. PRN: 18128602 - Date of printing 26th September 2024

Read Maurice Residential Limited is registered in England No. 04302959