



5 Regan House 23 Lansdown Terrace, Lansdown, Cheltenham, GL50 2JP

A VERY WELL PRESENTED 4TH FLOOR APARTMENT SET IN THIS CIVIC AWARD WINNING DETACHED PERIOD VILLA OFFERING TWO BEDROOMS AND ARGUABLY ONE OF THE BEST SKYLINE VISTAS ON LANSDOWN TERRACE FROM THE SITTING ROOM.

Regan House is an attractive period building set in a popular area of Lansdown, located a short distance from Montpellier. This 3rd floor apartment offers two bedrooms, spacious sitting room with far reaching west facing views over Cheltenham's skyline and on a clear day the Welsh mountains.

On entering the hallway leads off to all rooms. At the front of the apartment is the 21'8" sitting room, which has a large sash window. It also has an open fireplace. The kitchen has been upgraded and has a host of appliances which will be included in the sale.

The Master Bedroom has a lovely aspect over Montpellier and Parabola Road. The bathroom is very presentable and finished with a white suite. The second bedroom would also make a very pleasant office for those who have a need to work from home.

Agents note: The apartment has gas central heating and allocated parking to the front. If additional parking is required Lansdown Terrace is situated with Residents Parking Zone 13 which are available from Gloucestershire City Council.

Freehold owned by Regan House Limited (Co reg no 6308494)

Tenure: Leasehold with share of freehold

Lease: 999 years from 1.1.1997

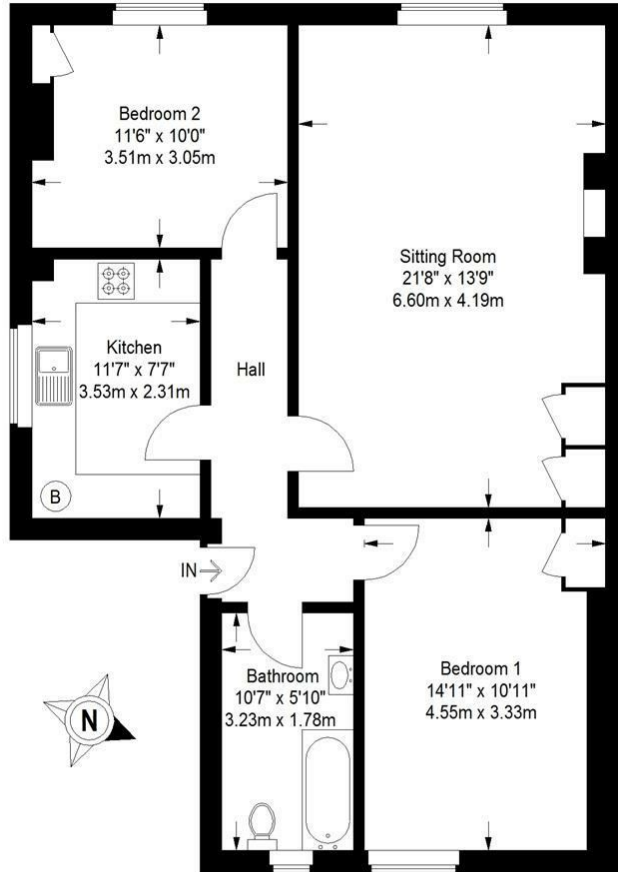
Service Charge: £193.89 pcm

Ground Rent: Not collected

Managing Agents: Young & Gilling







Approximate Gross Internal Area :- 819 sq ft / 76.1 sq m

Illustration for identification purposes only, measurements are approximate and are not to scale.
Please check all details before making any decisions reliant upon them.
Copyright Read Maurice. (ID665337)



5 Regan House 23 Lansdown Terrace, Lansdown, Cheltenham, GL50 2JP

These particulars, whilst believed to be accurate are set out as a general outline only for guidance and do not constitute any part of an offer or contract. Intending purchasers should not rely on them as statements or representation of fact, but must satisfy themselves by inspection or otherwise as to their accuracy. We have not carried out a detailed survey nor tested the services, appliances and specific fittings. Room sizes should not be relied upon for carpets and furnishings. The measurements given are approximate. No person in this firm's employment has the authority to make or give any representation or warranty in respect of the property. PRN: 18907320 - Date of printing 24th May 2024

EPC: D
Council Tax: D
Area: 819.00 sq ft

readmaurice 

48 Andover Road, Cheltenham, GL50 2TL
Tel: 01242 241122
Email: post@readmaurice.co.uk
www.readmaurice.co.uk