



8 Charlotte Rose House, Christchurch Road, Lansdown, Cheltenham GL50 2PB

An established flat located in the heart of Lansdown, Cheltenham. This well-proportioned property comprises of a entrance hall, sitting room with balcony, fitted kitchen, two bedrooms and bathroom. In addition there is an allocated car parking space.





Situated on the first floor, this flat offers a balcony with a south easterly aspect. With allocated parking for one vehicle, you'll never have to worry about finding a parking space.

The convenience of this central location cannot be overstated, with most amenities within easy reach. Lansdown Park is just around the corner and Montpellier is within easy reach.

The property has the added bonus of lift and stair access, double glazed window and gas fired central heating to radiators.

Being sold chain free this flat provides an excellent opportunity.

Lease Details

Tenure: Leasehold

Lease: 125 years commencing 1st April 2007.

Service Charge: £1,806 per annum.

Ground Rent: £150 per annum.

Managing Agents: Ash Property Management.

General

Services: All mains services are believed to be connected.

Local Authority: Cheltenham Borough Council.

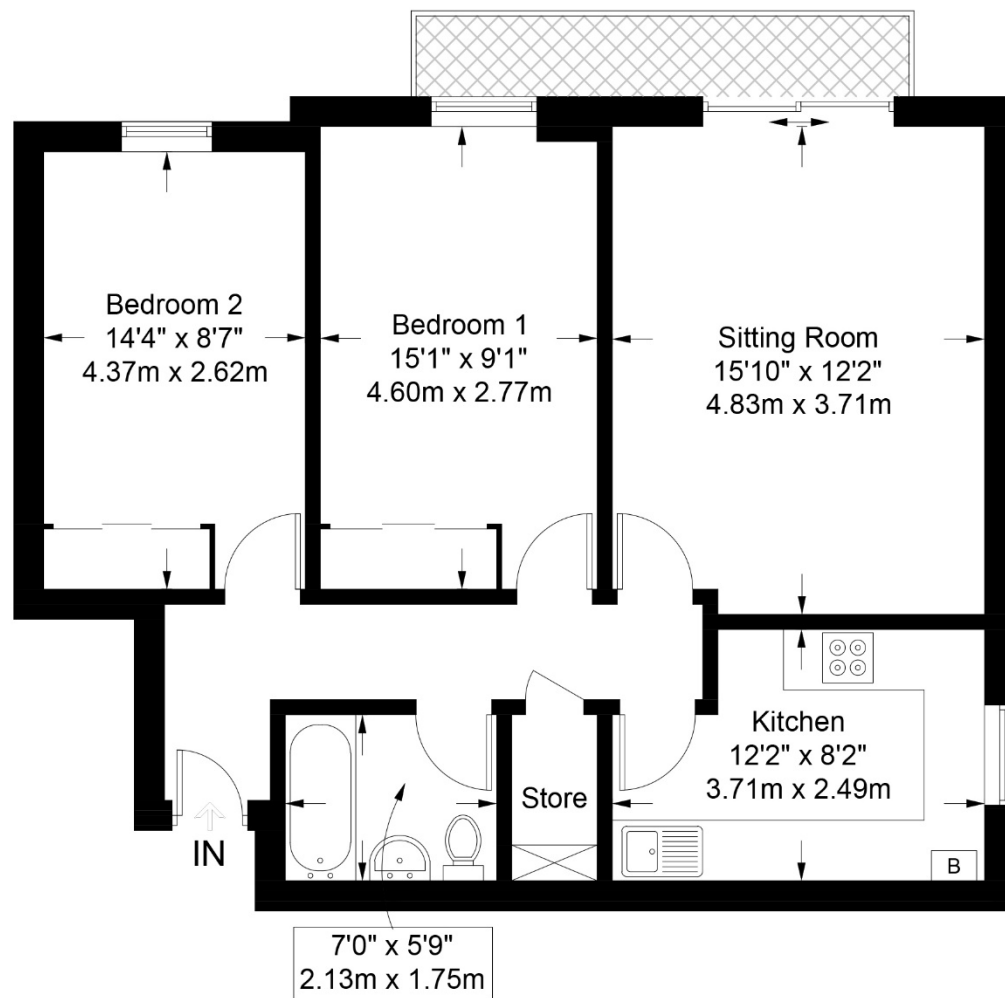
Council Tax: Band C

EPC: C (79/81)

Parking: The property has an allocated car parking space.

Title Number: GR309842





8 Charlotte Rose House, Christchurch Road, Lansdown, Cheltenham GL50 2PB
 Approximate Gross Internal Area 704 sq ft / 65.4 sq m

readmaurice 

48 Andover Road, Cheltenham GL50 2TL
 Tel: 01242 241122
 Email: post@readmaurice.co.uk
www.readmaurice.co.uk

These particulars, whilst believed to be accurate are set out as a general outline only for guidance and do not constitute any part of an offer or contract. Intending purchasers should not rely on them as statements or representation of fact, but must satisfy themselves by inspection or otherwise as to their accuracy. We have not carried out a detailed survey nor tested the services, appliances and specific fittings. Room sizes should not be relied upon for carpets and furnishings. The measurements given are approximate. No person in this firm's employment has the authority to make or give any representation or warranty in respect of the property. Purchasers should not rely on room labels as they are chosen by the floor planner and may not have the deemed planning consent for such use.