



114 Fairview Road, Fairview, Cheltenham, Gloucestershire GL52 2ER

An individual Grade II listed period town house arranged over several levels and providing unique accommodation displaying much charm and character.





A truly unique Grade II listed town house located within easy reach of central Cheltenham offering accommodation arranged over several levels.

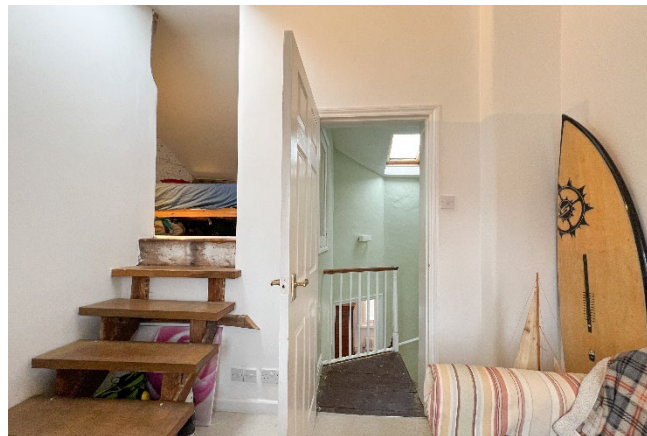
The front door opens into an entrance hall with stairs to the first floor and door opening into a good sized dining/living space with access to a well fitted modern kitchen. A staircase from the dining room leads down to a spacious lower ground floor sitting room.

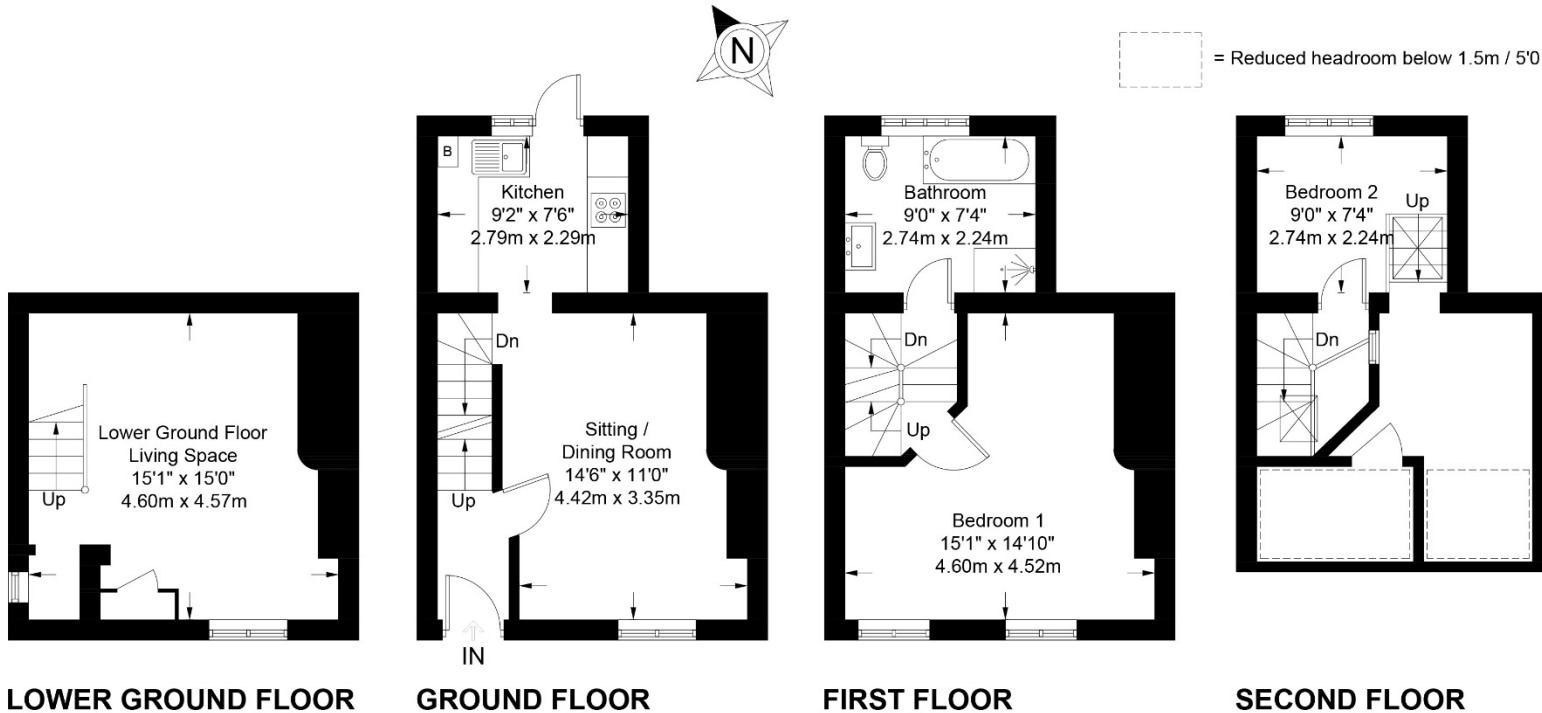
From the entrance hall stairs lead up to a half landing off which is a modern bathroom fitted with a white suite and comprising W.C, basin, bath and a separate shower cubicle. The stairs continue to the first floor and the main bedroom which has two windows to the front and wide wooden floor boards.

Continuing up to the second bedroom. The bedroom is arranged over two levels with a dressing/sitting area and open tread stairs which lead to a sleeping area.

Outside to the rear is a shared yard and storage shed with pedestrian access to the front.

The property features gas fired central heating to radiators and many unique features including wooden floors.





General

Service: All mains service are believed to be connected.
 Local Authority: Cheltenham Borough Council.
 Council Tax: Band B
 EPC: Exempt - Grade II listed property.
 Parking: There is a resident parking scheme in place.
 Title Number: GR124956

114 Fairview Road, Fairview, Cheltenham, Gloucestershire GL52 2ER
 Approximate Gross Internal Area 1020 sq ft / 94.8 sq m

These particulars, whilst believed to be accurate are set out as a general outline only for guidance and do not constitute any part of an offer or contract. Intending purchasers should not rely on them as statements or representation of fact, but must satisfy themselves by inspection or otherwise as to their accuracy. We have not carried out a detailed survey nor tested the services, appliances and specific fittings. Room sizes should not be relied upon for carpets and furnishings. The measurements given are approximate. No person in this firm's employment has the authority to make or give any representation or warranty in respect of the property. Purchasers should not rely on room labels as they are chosen by the floor planner and may not have the deemed planning consent for such use.

readmaurice 

48 Andover Road, Cheltenham GL50 2TL
 Tel: 01242 241122
 Email: post@readmaurice.co.uk
www.readmaurice.co.uk