

Chaise Meadow, Lymm, WA13 9UP

Offers In Region Of £345,000

🛏 3 🚿 2 🛋 1



An immaculately presented three-bedroom townhouse, beautifully arranged over three floors and finished to a high standard throughout. Ideally situated close to local amenities and schools.

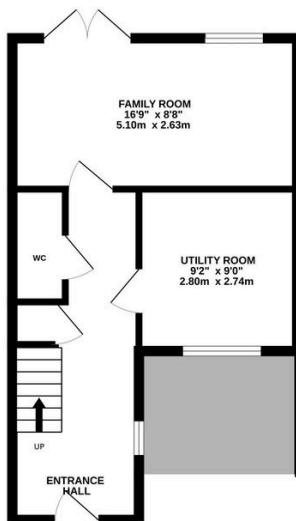
The property offers stylish, modern living including a welcoming entrance hall, reception room with French doors to the rear garden, utility room and WC. An open-plan kitchen and lounge occupies the first floor, featuring integrated appliances and a breakfast bar—perfect for entertaining. The second floor hosts three well-proportioned bedrooms, including a principal suite with en-suite, along with a contemporary family bathroom.

Externally, the home benefits from off-road parking and a fully enclosed, low-maintenance rear garden. Early viewing is highly recommended.

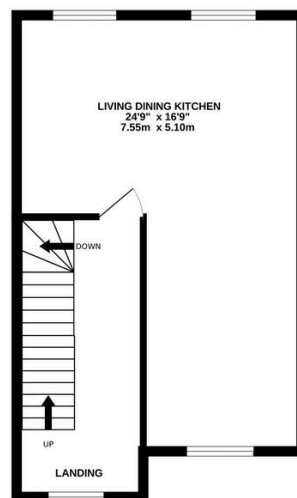
Key Features

- Immaculately presented three-bedroom townhouse
- Stylish open-plan kitchen and lounge
- Modern family bathroom plus ground floor WC
- Off-road parking to the front
- Sought-after location close to amenities and schools
- Arranged over three well-planned floors
- Principal bedroom with en-suite shower room
- Utility room
- Enclosed, low-maintenance rear garden
- Easy commuting distance to major motorway networks

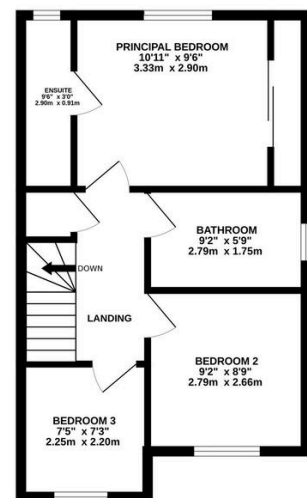
GROUND FLOOR
377 sq.ft. (35.0 sq.m.) approx.



1ST FLOOR
441 sq.ft. (41.0 sq.m.) approx.



2ND FLOOR
441 sq.ft. (41.0 sq.m.) approx.



TOTAL FLOOR AREA: 1259 sq.ft. (117.0 sq.m.) approx.

Whilst every attempt has been made to ensure the accuracy of the floorplan contained here, measurements of doors, windows, rooms and any other items are approximate and no responsibility is taken for any error, omission or mis-statement. This plan is for illustrative purposes only and should be used as such by any prospective purchaser. The services, systems and appliances shown have not been tested and no guarantee as to their operability or efficiency can be given.
Made with Metropix ©2025