

Albany Road, Lymm, WA13 9LP

£350,000

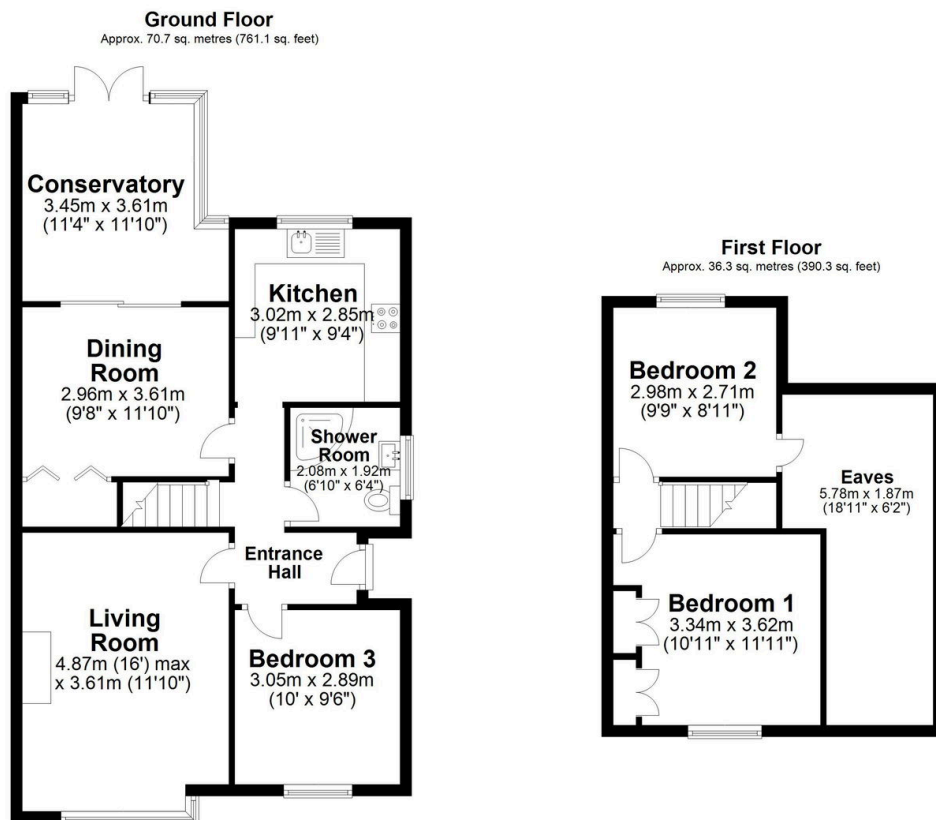
3 1 3



Three-bedroom semi-detached dormer bungalow offered for sale with the advantage of no onward chain. Located in a popular area a short walk from the village centre, local amenities and the Trans Pennine Trail. Situated on a desirable plot with a garden that wraps around three sides, providing plenty of outdoor space and a driveway offering off-road parking. Early viewings are highly recommended.

Key Features

- No Onward Chain
- Short walk from Lymm village centre and the Trans Pennine Trail
- Driveway providing off-road parking
- Early viewings are strongly recommended
- Three bedroom semi-detached dormer bungalow
- Set on a desirable plot
- Modern Shower Room
- Easy commuting distance to major motorway networks and airports



Total area: approx. 107.0 sq. metres (1151.4 sq. feet)

Measurements of rooms and any other items are approximate and no responsibility is taken for any misstatement. This plan is for illustrative purposes only and should be used as such. Produced by OpenInsight.co.uk
Plan produced using PlanUp.