

36 Chaise Meadow, Lymm, WA13 9UP

Offers Over £350,000

🛏 4 🚗 2 🛋 2



Immaculately presented four bedroom townhouse, located close to local amenities and schools. Stylish presentation throughout, additional parking provided, easy maintenance rear garden, quality fixtures and fittings. An early viewing is highly recommended to appreciate what this lovely property has to offer.

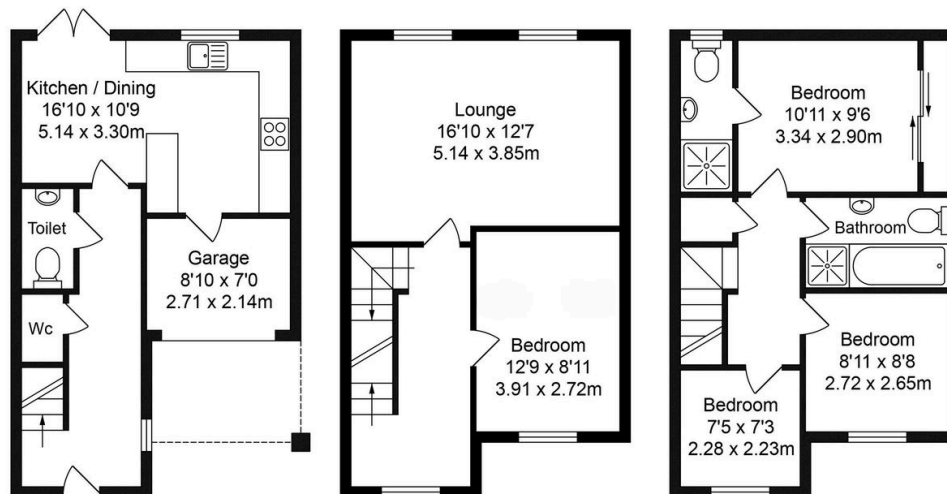
Key Features

- Four bedroom semi-detached townhouse
- Stylishly presented throughout and in excellent order
- Dining Kitchen with French doors onto the garden
- Spacious lounge
- Master ensuite
- Off road parking for up to three vehicles
- Integral garaged used for storage and as a utility room
- Landscaped gardens to front and rear
- Easy access to the Trans Pennine Trail
- Early viewings highly recommended

36 Chaise Meadow, Lymm

Total Approx. Floor Area 1259 Sq.ft. (117.0 Sq.M.)

Whilst every effort is made to accurately reproduce these floor plans, measurements are approximate, not to scale and for illustrative purposes only



Ground Floor
Approx. Floor
Area 377 Sq.Ft
(35.0 Sq.M.)

First Floor
Approx. Floor
Area 441 Sq.Ft
(41.0 Sq.M.)

Second Floor
Approx. Floor
Area 441 Sq.Ft
(41.0 Sq.M.)